

# TYBOX 817- 827 W RF

1 and 2-channel wireless programmers with built-in thermostat

User guide



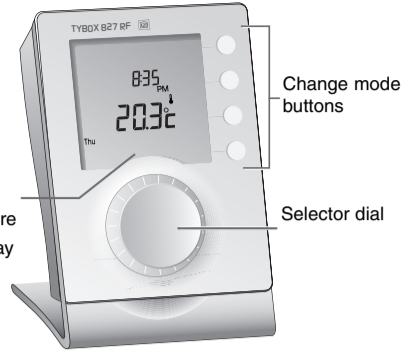
- Carefully read these instructions prior to use.
- Do not attempt to repair the unit yourself; an after-sales service is available.

## 1. Presentation

- These instructions apply to both the **TYBOX 817 WRF** and the **TYBOX 827 WRF**.
- The hot water mode (🔥) is only available on the **TYBOX 827 WRF**.

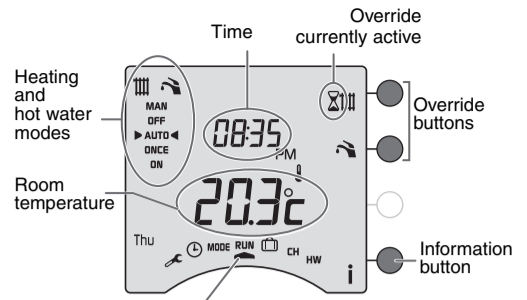
### Stand-by screen:

- Room temperature
- Current day and time



## 2. RUN Mode

Press a button to "activate" the display.



### General mode active

- 🔧 Configuration
- 🕒 Time setting
- MODE Operating mode selection
- RUN Run the operating mode selected
- 👤 Absence mode
- CH Heating programming
- HW Hot water programming

## 3. Choosing the operating mode

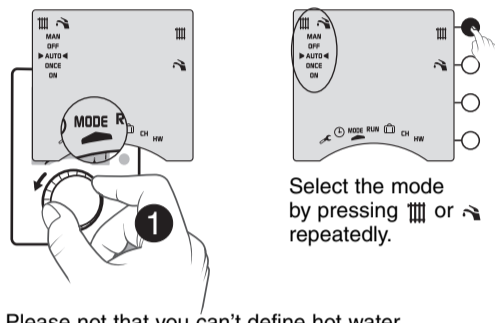


Delta Dore hereby declares that the equipment complies with the essential requirements and other relevant provisions of the R&TTE Directive 1999/5/EC.

The EC declaration of conformity for this equipment is available, on request, from:  
"Technical info" department  
DELTA DORE - Bonnemain - 35270 Combourg (France)  
Email: info.techniques@deltadore.com



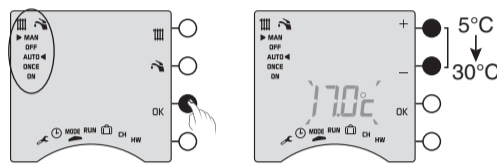
Because of changes in standards and equipment, the characteristics given in the text and the illustrations in this document are not binding unless confirmed.



Please note that you can't define hot water temperature in this programmer

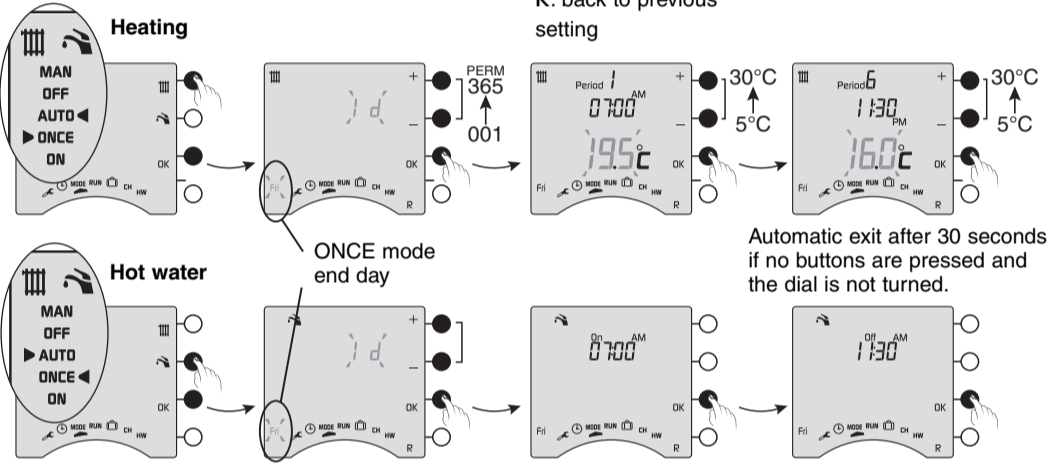
	☰	🔥
MAN	Constant temperature setting	NA
OFF	Frost Protection	Off
AUTO	Follows the programming	
ONCE	Follows the ONCE programme. Return to AUTO mode at the end of the countdown.	
ON	NA	Permanent ON

### MAN Mode



Turn the dial to exit the setting mode.

### ONCE Mode

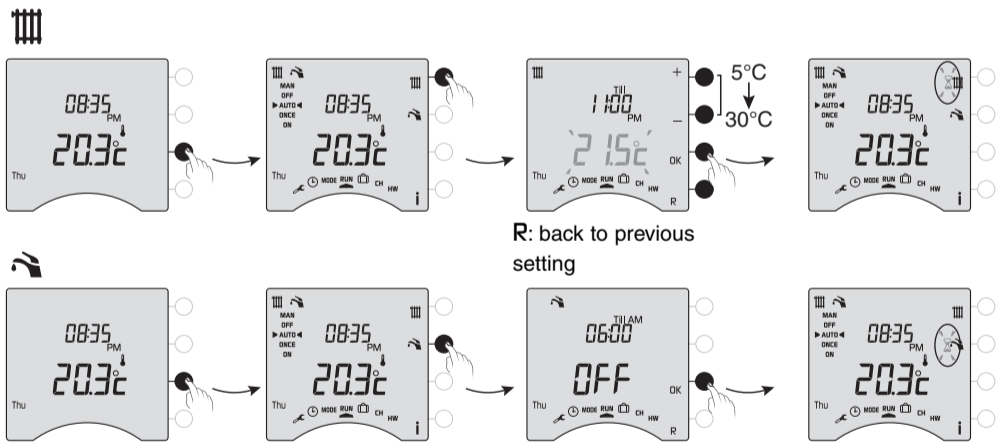


## 4. Override

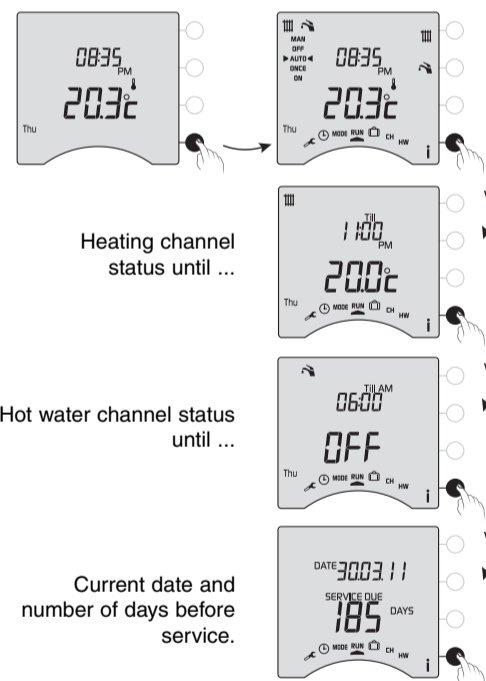
From the RUN mode, override enables:

- for the heating, modification of the temperature setting (5°C to 30°C) until the next programme change
- for the hot water, modification of the current operation (ON/OFF) until the next programme change

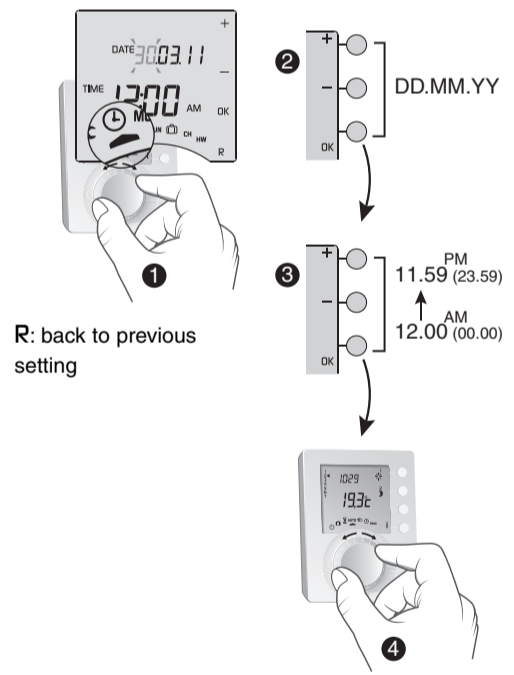
- Override is only accessible in AUTO or ONCE mode.
- To cancel an active override, press the relevant button (☰ or 🔥) or turn the dial.



## 5. Information button

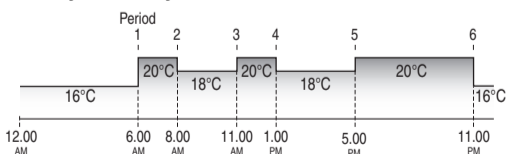


## 6. Date / Time

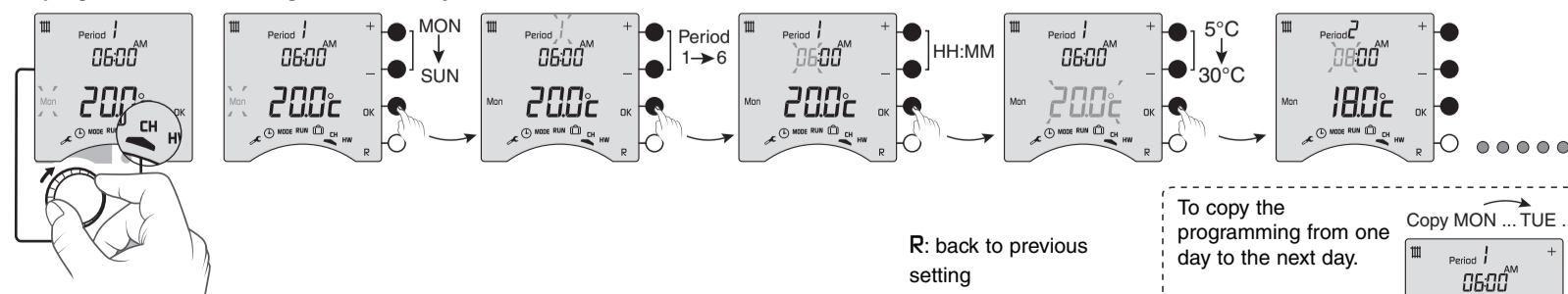


## 7. Programming the heating

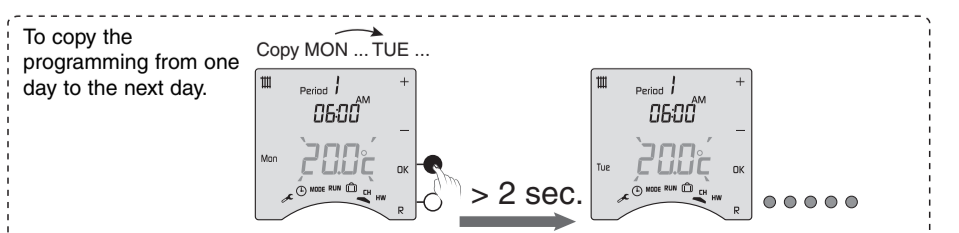
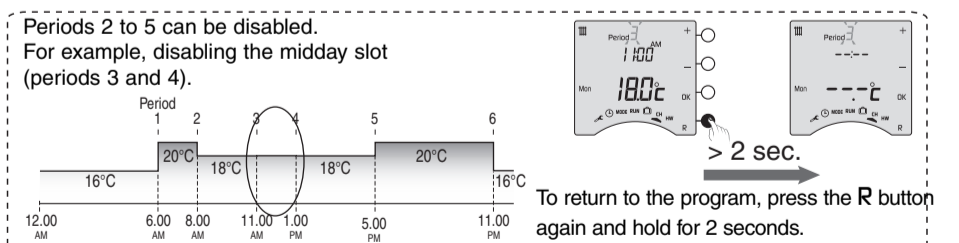
Example: default programme applied from Monday to Friday:



The programme can be changed for each day.

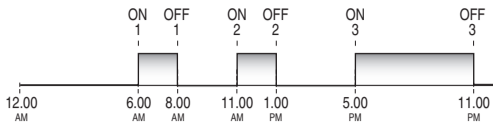


A simplified programme can be applied (2 programmable periods) for a set number of days (ONCE mode).

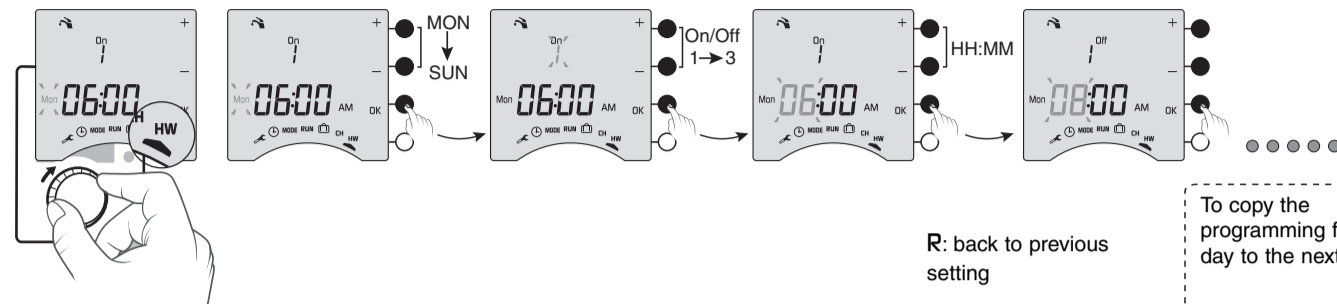


## 8. Programming the hot water channel

Example: default programme applied from Monday to Friday:



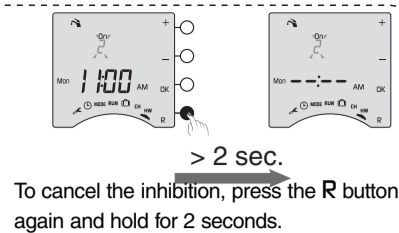
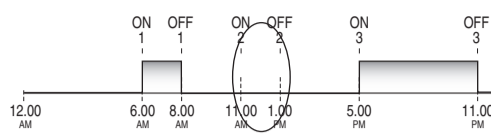
The programme can be changed for each day.



R: back to previous setting

A simplified programme can be applied (2 programmable periods) for a set number of days (ONCE mode).

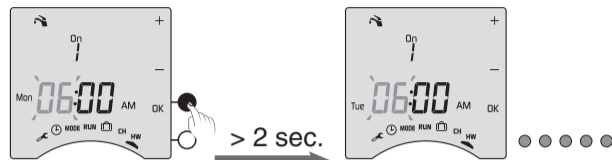
ON/OFF periods 2 and 3 can be disabled. For example, inhibition of the midday slot (ON and OFF period 2).



> 2 sec.  
To cancel the inhibition, press the R button again and hold for 2 seconds.

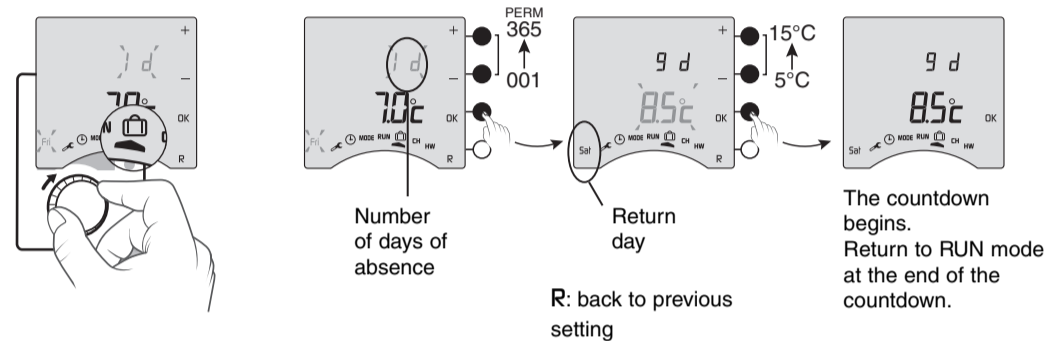
To copy the programming from one day to the next day.

Copy MON ... TUE ...



> 2 sec.

## 9. Absence mode



R: back to previous setting

## 10. Compatible home automation options

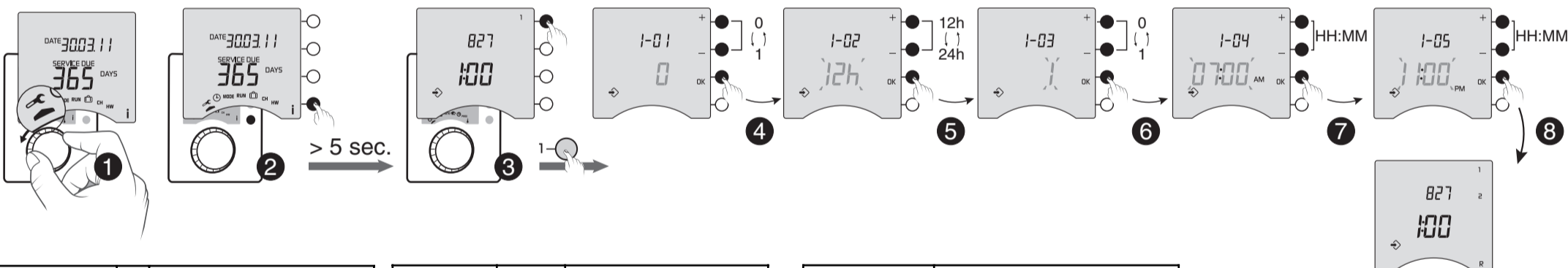
You can associate your programmer with the following options:

Type of transmitter associated	Resulting function
Opening detector	"Energy saving" function Heating switches to Frost Protection mode when a window is opened (temperature set in  mode).
Wireless outdoor sensor	Indication of outside temperature by consulting the information menu (I button).

For information about associating and using home automation products, contact:

"Technical info" department  
DELTA DORE - Bonnemain  
35270 Combourg (France)  
Email: info.techniques@deltadore.com

## 11. Basic configurations (menu 1)



1-01 User modification authorisation	0	Modification of programme and temperature settings (from 5 °C to 30 °C) authorised (default)
	1	Modification of programme not authorised and temperature settings restricted (19 °C +/- 3 °C)

1-02 Time display selection	12H	12-hour clock (default)
	24H	24-hour clock

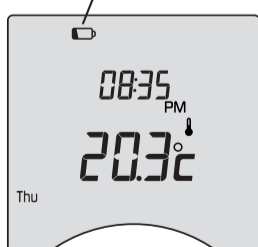
1-03 Automatic summer/winter mode authorisation	0	Not authorised
	1	Authorised (by default)

1-04 ONCE programme start time	Setting from 12 midnight to 12 noon (default value: 07:00 AM)
-----------------------------------	---

1-05 ONCE programme end time	Setting from 12 noon to 12 midnight (default value: 11:00 PM)
---------------------------------	---

## 12. Replacing the batteries

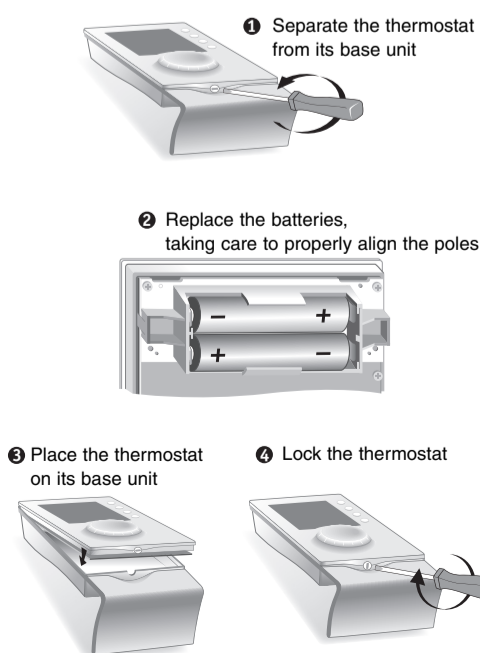
Battery level symbol



The batteries need changing when the battery level symbol appears (2 LR03 or AAA 1.5V alkaline batteries).

Precautions must be taken:

- You have approximately 30 seconds to change the batteries before the time is reset to zero (if this happens, reset the time).
- Ensure that the +/- polarities are correctly placed when the battery is fitted into the unit.
- Do not dispose of used batteries in unauthorised places (you should respect the environment by taking the batteries to a suitable collection site).
- Do not recharge them.



## 13. Troubleshooting

**Nothing is displayed on the room unit screen.**  
There is no power supply.  
Check the batteries.

**The unit is in time setting mode.**  
You took too much time in changing the batteries.  
Set the time. All the other settings have been kept.

**The temperature displayed does not match the temperature measured in the room (thermometer).**  
Refer to the installation guide (menu 2-01).

**The programme cannot be modified and the temperature settings are limited (19 °C +/- 3 °C).**  
Refer to the Configuration section (menu 1-01).

**"SERVICE DUE" is flashing on the display.**  
There are less than 30 days before the mandatory service is due.  
Contact your maintenance department.

**"SERVICE DUE" is displayed on the unit.**  
The mandatory service date has passed.  
The heating works on a set temperature setting (override possible for 1 day).  
The hot water will shut down (override possible for 2, 3 or 4 hours).  
Contact your maintenance department.

**The heating does not work according to the required temperature.**  
If you have a Room Thermostat wired in series with the programmer, check that this thermostat is set to maximum.

**Your heating system is in Frost-Protection mode (temperature set in mode).**  
The dial is still in position, , , CH or HW.