

# TYBOX 817- 827 W RF

1 and 2-channel wireless programmers with built-in thermostat

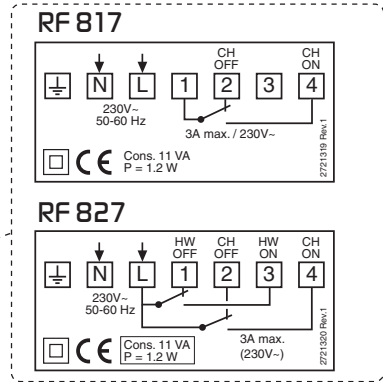
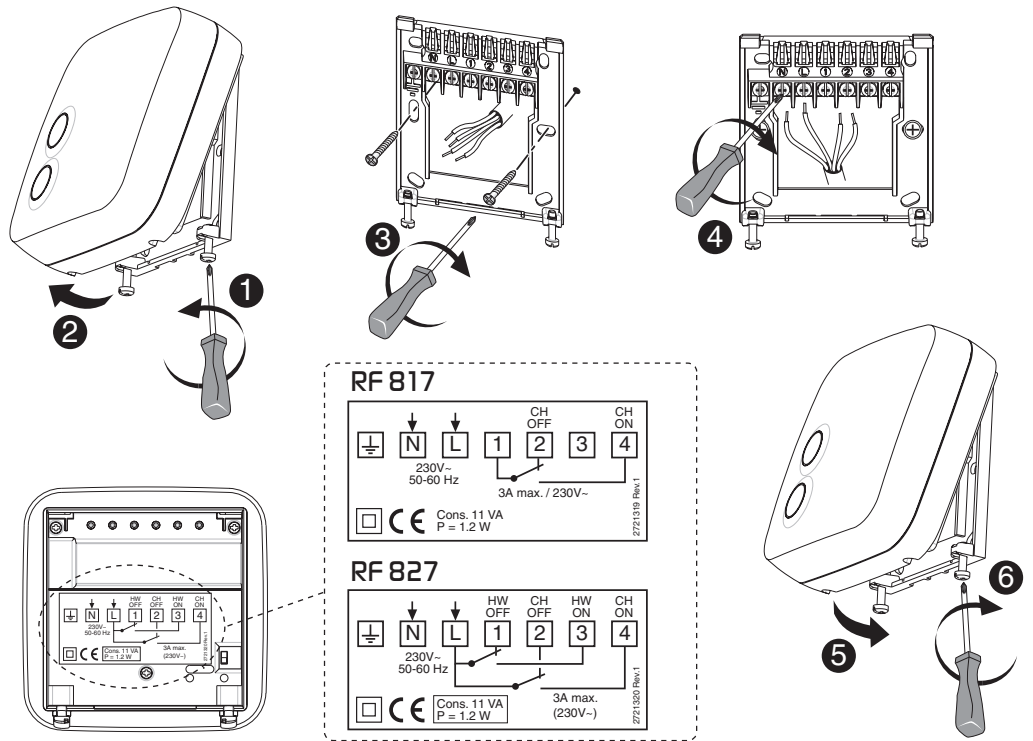
Installation instructions



- These instructions apply to both TYBOX 817 WRF and TYBOX 827 WRF.
- The hot water mode (HW) is only available on the TYBOX 827 WRF.

- Carefully read these instructions prior to installation.
- The unit must be installed in compliance with current standards.
- Always switch off the mains before installing or servicing the unit.
- Do not attempt to repair the unit yourself; after-sales service is available.
- Check that the fastenings are suitable for the surface to which the unit will be mounted (plasterboard, brick, etc.).
- The diagrams provided are simplified for greater clarity. Protection and other accessories required by standards are not illustrated. Standards and good practice must be complied with. Connected or nearby units must not generate excessive interference (Directive 2004/108/EC).

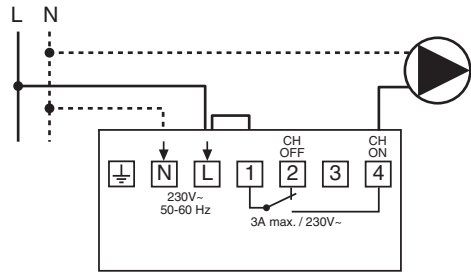
## 1. Installing the RF 817 or 827 receiver



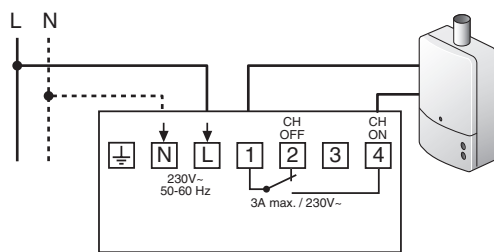
## 2. Connecting the RF 817 or RF 827 receiver

### RF 817

#### Example 1: 230V powered contact

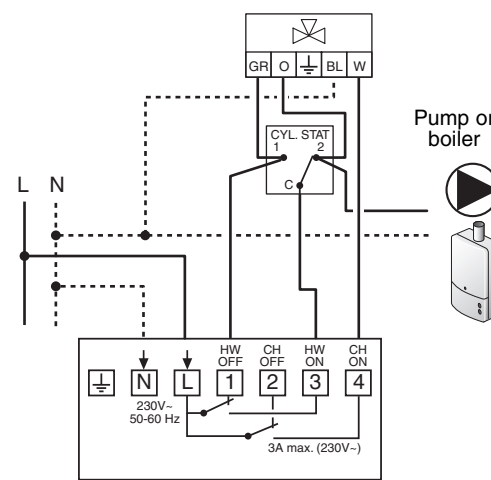


#### Example 2: Volt free contact

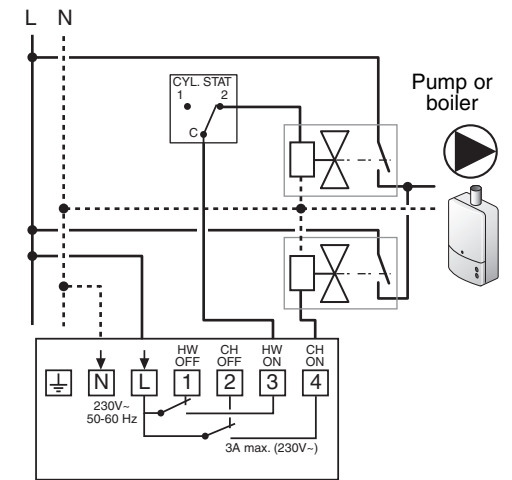


### RF 827

#### With a 3-port mid-position valve



#### With 2 spring-return valves



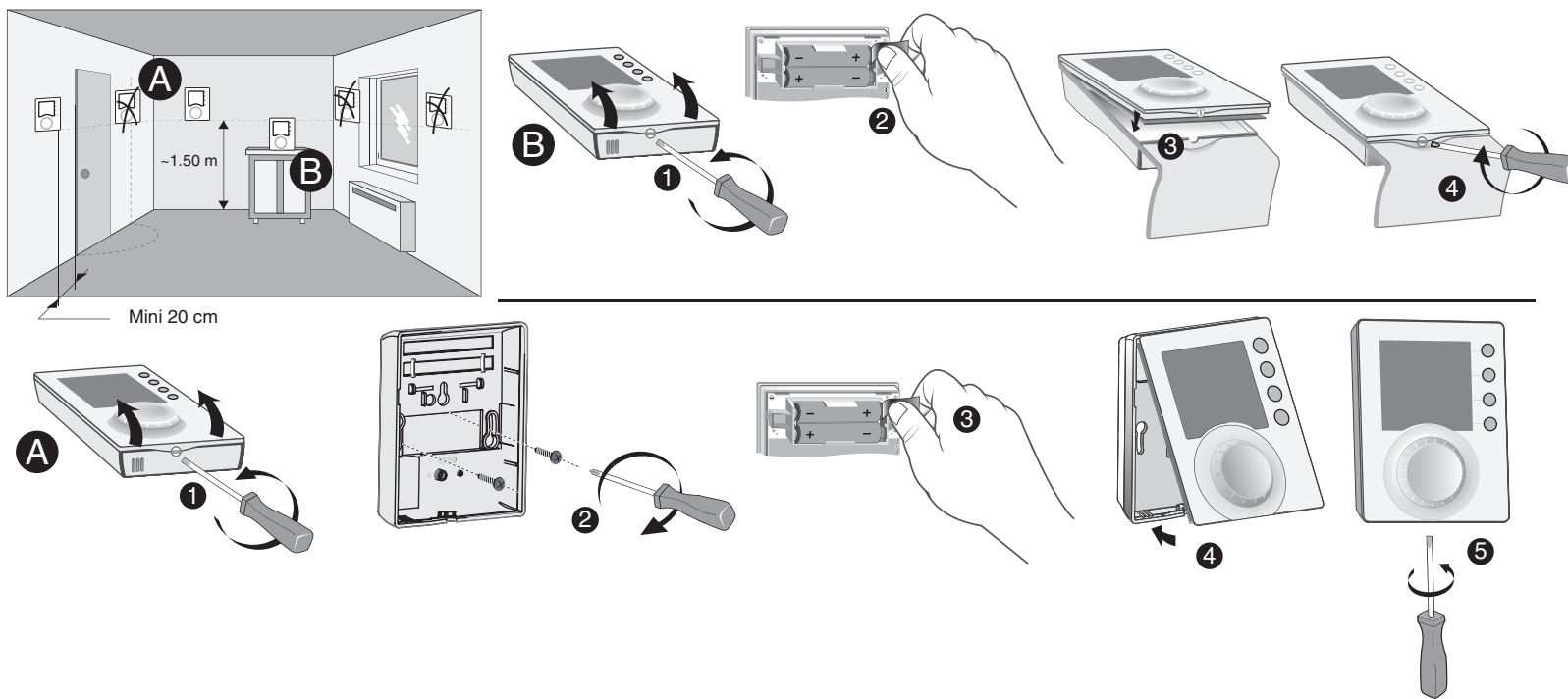
Delta Dore hereby declares that the equipment complies with the essential requirements and other relevant provisions of the R&TTE Directive 1999/5/EC.

The EC declaration of conformity for this equipment is available, on request, from:  
"Technical info" department  
DELTA DORE - Bonnemain - 35270 Combourg (France)  
Email: info.techniques@deltadore.com

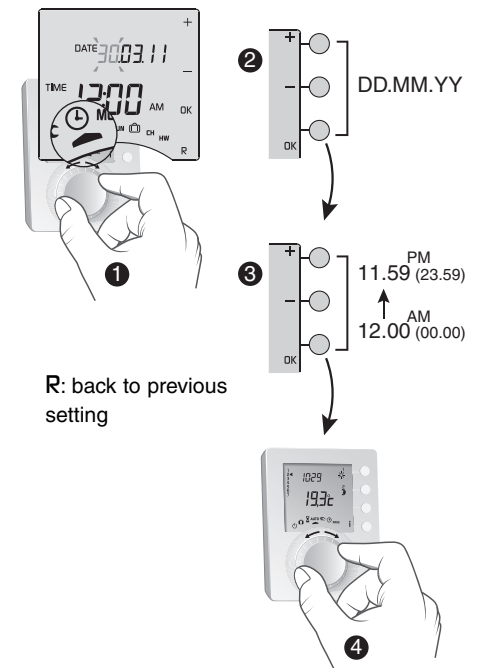


Because of changes in standards and equipment, the characteristics given in the text and the illustrations in this document are not binding unless confirmed.

## 3. Installing the transmitter

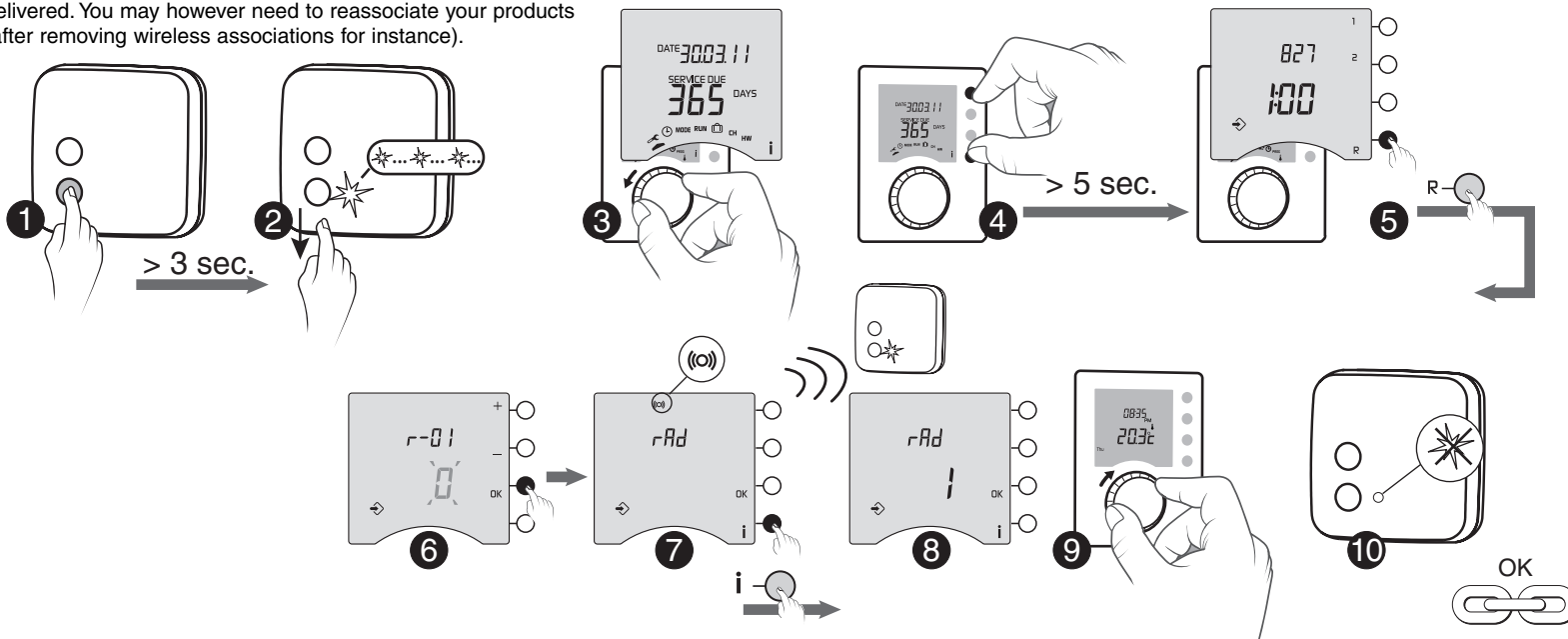


## 4. Date / time



## 5. Wireless association (prebound)

The transmitter and the receiver are already associated when delivered. You may however need to reassociate your products (after removing wireless associations for instance).



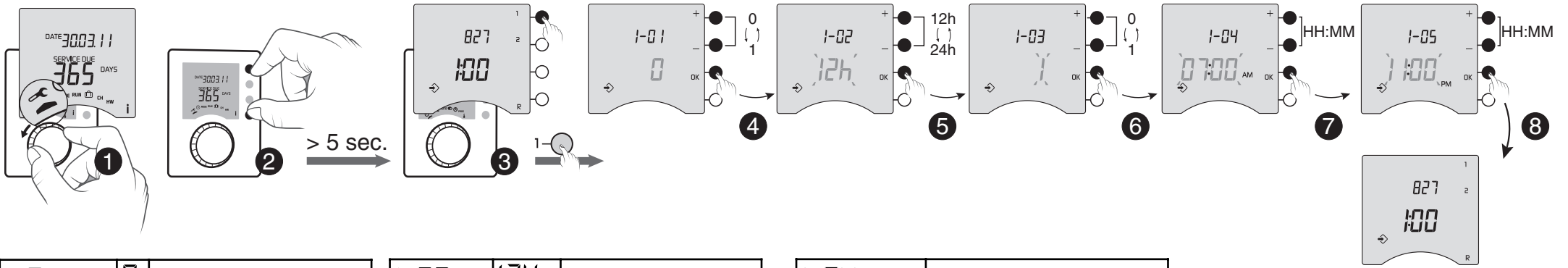
## 6. Compatible home automation options

You can associate your programmer with the following options:

Type of transmitter associated	Resulting function
Opening detector	"Energy saving" function Heating switches to Frost Protection mode when a window is opened (temperature set in  mode).
Wireless outdoor sensor	Indication of outside temperature by consulting the information menu ( button).

For information about associating and using home automation products, contact:  
"Technical info" department  
DELTA DORE - Bonnemain  
35270 Combourg (France)  
Email: info.techniques@deltadore.com

## 7. Basic configurations (menu 1)



1-01 User modification authorisation	0	Modification of programme and temperature settings (from 5 °C to 30 °C) authorised (default)
	1	Modification of programme not authorised and temperature settings restricted (19 °C +/- 3 °C)

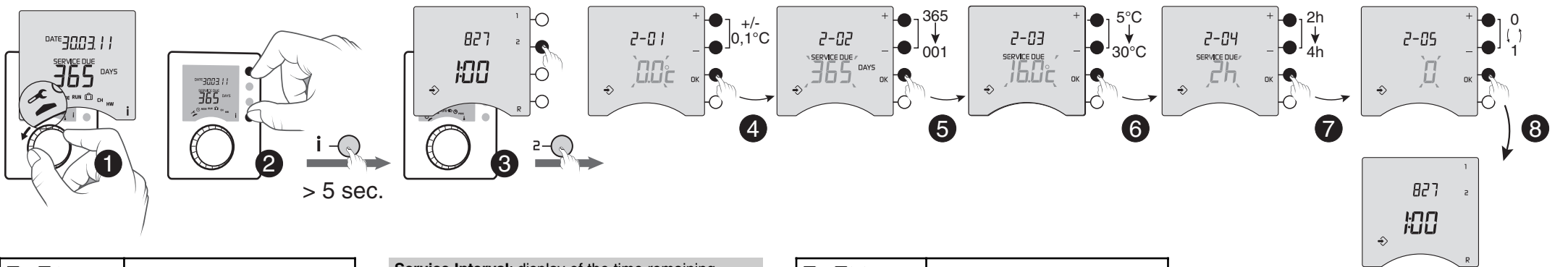
1-02 Time display selection	12H	12-hour clock (default)
	24H	24-hour clock

1-03 Automatic summer/winter mode authorisation	0	Not authorised
	1	Authorised (by default)

1-04 ONCE programme start time	Setting from 12:00 to 00:00 (default value: 07:00AM)
-----------------------------------	--

1-05 ONCE programme end time	Setting from 12 noon to 12 midnight (default value: 11:00PM)
---------------------------------	--

## 8. Advanced configurations (menu 2)



2-01 Correcting the temperature measured	Correction possible from -5 °C to +5 °C in increments of 0.1 °C. Press the + or - buttons to modify and press the OK button to confirm.
---	---

**Service Interval:** display of the time remaining before mandatory service required. After this time, if the service has not been done, the operating temperature setting for heating is fixed (menu 2-03) and the DHW switches to OFF (unless overridden, menu 2-04).

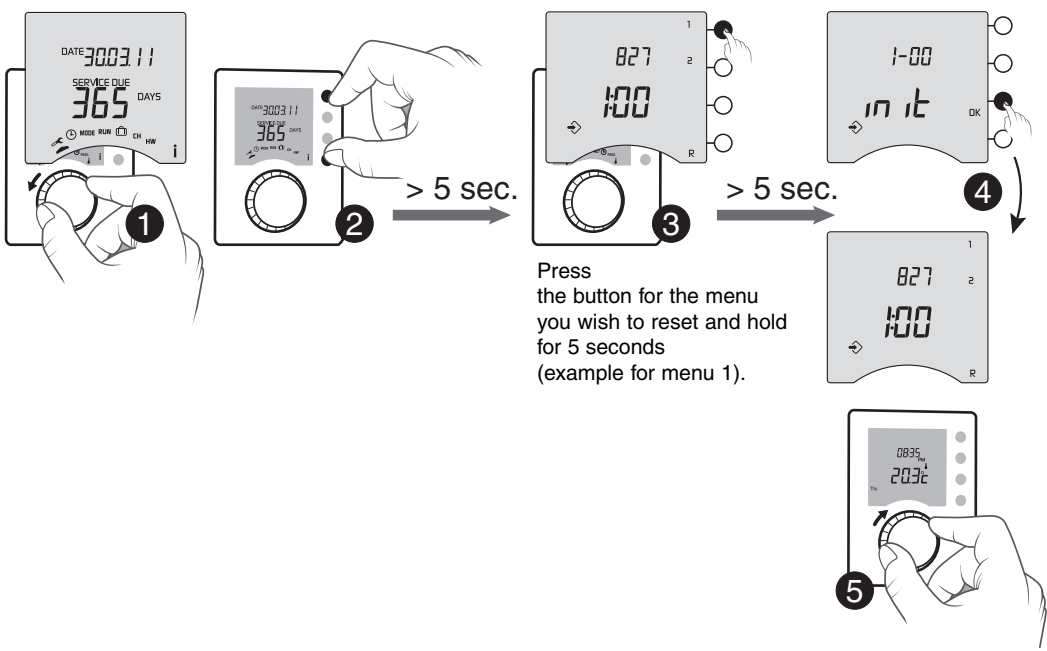
2-04 Authorised DHW override time	<b>DHW override after Service Interval</b> 2, 3 or 4 hours (default value: 2 hours).
--------------------------------------	---

2-02 Number of days before service	<b>Service Interval</b> Choice of 1 to 365 days or --- to deactivate the function (default value: 365)
---------------------------------------	---

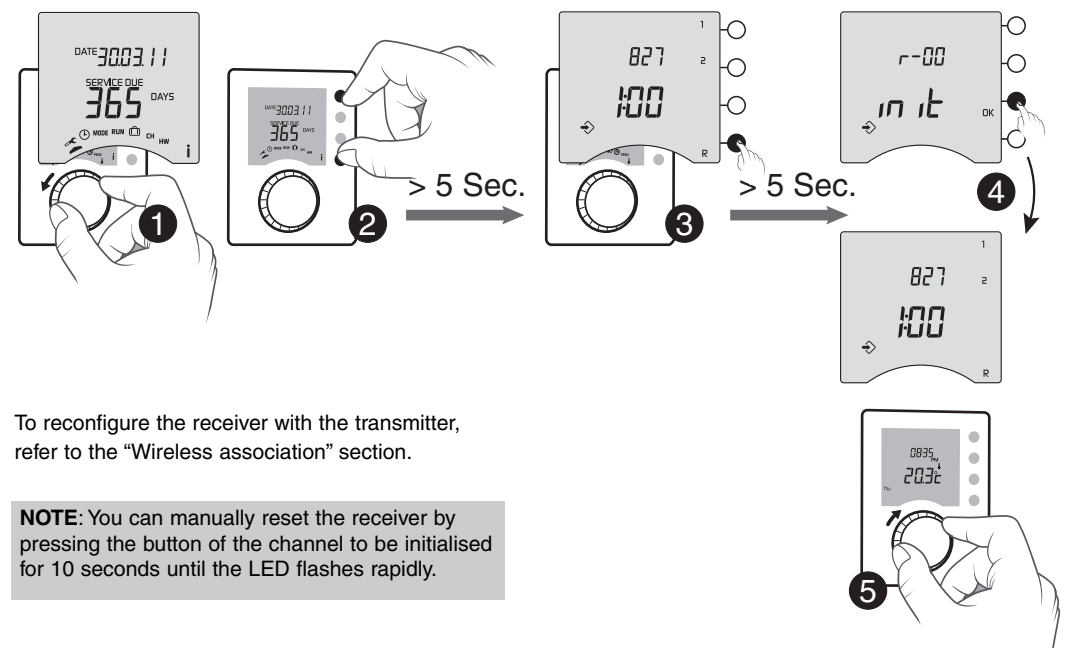
2-03 Temperature selection Service Interval	<b>Temperature applied after Service Interval</b> Choice of 5 to 30 °C (default value: 16 °C)
--	--

2-05 Anti-seizing of circulator pump	0 Anti-seizing off (by default) 1 Anti-seizing enabled (circulator pump operates for 1 minute every 24 hours)
---	--

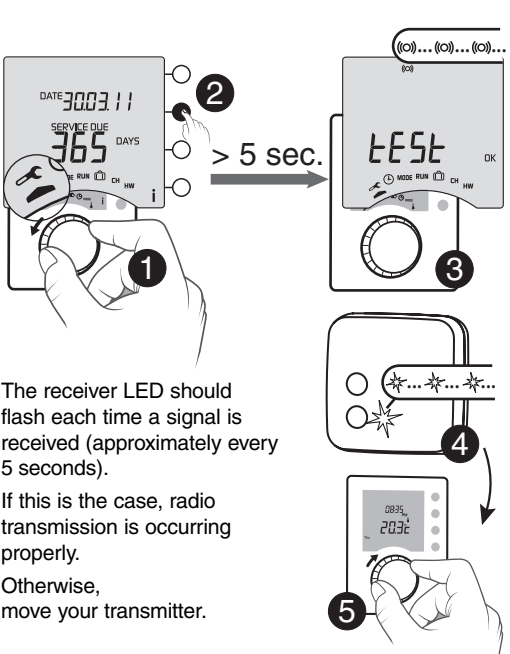
## 9. Return to the factory configuration



## 10. Deleting wireless associations



## 11. Wireless test



## 12. Technical characteristics

### Transmitter TYBOX 817- 827 RF

- Powered by two LR03/AAA 1.5 V alkaline batteries (supplied), battery life of 2 years for normal use
- Class III insulation
- Class III insulation
- Clock backup when replacing the batteries: 30 seconds
- Transmission frequency 868 MHz (Standard EN 300 220)
- Class 1 radio equipment (can be placed on the market and put into service without any restrictions)
- Wireless range: 100 to 300 metres outside, depending on the equipment associated (the range varies according to installation conditions and the electromagnetic environment)
- Wireless remote control device
- Dimensions: LxHxD = 80 x 103 x 16 mm
- Protection rating: IP 30
- Storage temperature: -10 °C to +70 °C
- Operating temperature: 0 °C to +40 °C
- Installation in an environment with normal pollution levels
- Attachment with screws or on a base

### Receiver RF 827

- 230V, 50 Hz power supply, +/-10%,
- Consumption: 11 VA (P=1.2 W)
- Class II insulation
- Radio frequency 868 MHz (standard EN 300 220)
- Wireless range: 100 to 300 metres outside, variable depending on the associated equipment (the range can vary depending on the installation conditions and the electromagnetic environment)
- Automatic action: 1.C (micro-interruption)
- Storage temperature: -10 °C to +70 °C
- Operating temperature: 0 °C to +40 °C
- Installation in an environment with normal pollution levels
- Screw mounting (standard Wallplate)
- Contact output 3 A max., 230 V Cos φ = 1
- Dimensions: 96 x 96 x 39 mm
- Protection rating: IP 20

## 13. Troubleshooting

**Nothing is displayed on the room unit screen.**  
There is no power supply.  
*Check the batteries.*

**The receiver does not accept orders from the transmitter.**

- Check the transmission by performing a wireless test
- Move your transmitter if necessary
- Repeat the wireless association of the receiver with the TYBOX RF

**The icon appears.**  
The batteries are low.

*Change the batteries, ensuring they are in the correct position.*

**During radio association, the device displays: rAd 1.**

This menu is reserved.  
*Associate the receiver again from the rAd menu.*

**The heating does not work according to the required temperature.**

*If you have a Room Thermostat wired in series with the programmer, check that this thermostat is set to maximum.*