



## Installation Instruction

### 1. Notes and Safety instructions

These products are approved to the European CEN standard EN215, which supersedes BS 6284.

Whilst Honeywell takes all reasonable practical steps to design and manufacture its products to comply with the requirements of the Health and Safety at Work Act 1974 all products must be properly used and purchasers are reminded that their obligations under the Act are to ensure that the installation and operation of such products at a place of work should be safe and without risk to health.

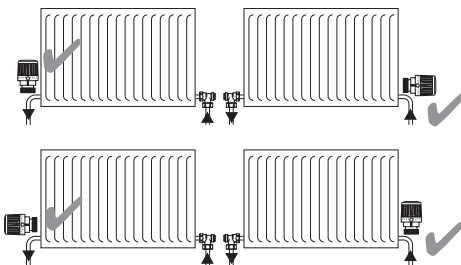
Honeywell reserves the right at any time and without notice to change any product or any information contained in this publication.

#### 1.2 Check list

- Check all connections for securing and leaks.
- Use clean pipework, free from swarf.
- Consider the use of an automatic by-pass valve (e.g. Honeywell DU145) to ensure the specification is adhered to.
- Don't allow heat from blow torch onto body.
- Don't install the valve in a position which is subject to draughts, sun radiation or behind curtains.
- Don't overtighten the head/body connection, as the insulating sleeve may become damaged.

### 2. Location

The thermostat can be fitted in any orientation with the flow through the body in either direction.



### 3. Technical Data

Maximum working pressure 10 bar (140 psi)

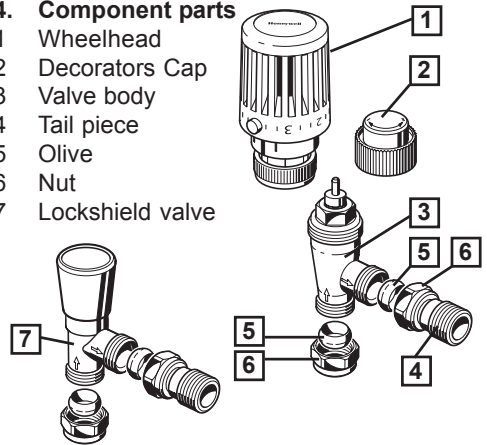
Closing time 20 minutes

To ensure that the valve will thermostatically close the differential pressure must not exceed 1.0 bar.

Maximum differential pressure to ensure reliable and quiet operation is 0.2 bar.

### 4. Component parts

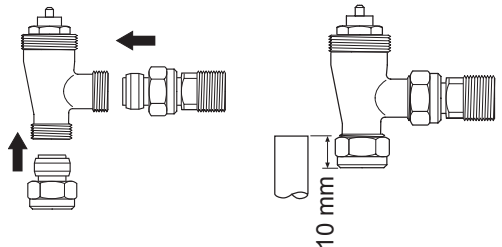
- 1 Wheelhead
- 2 Decorators Cap
- 3 Valve body
- 4 Tail piece
- 5 Olive
- 6 Nut
- 7 Lockshield valve



### 5. Installation

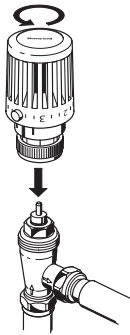
#### 5.1 Fitting - valve connections

1. Fit the connection fittings to the valve.
2. Cut copper tube to entry depth of 10 mm.



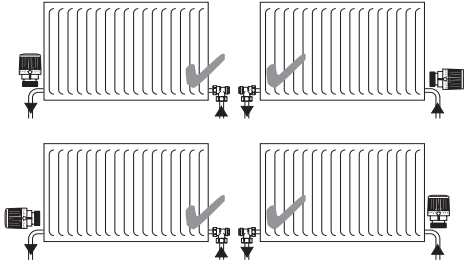
## 5.2 Head to body

1. Turn head to open position.
2. Position head so indicator is facing user.
3. Screw on head, ensuring lugs and slots engage as collar is tightened.



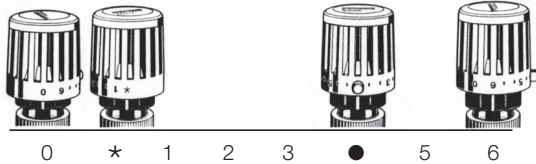
## 5.3 Lockshield valve

1. Install the lockshield valve opposite from thermostat



## 6. Adjustment / Setting of thermostat

The VT117E is adjustable by turning the top anti-clockwise to increase temperature setting or clockwise to decrease temperature setting.



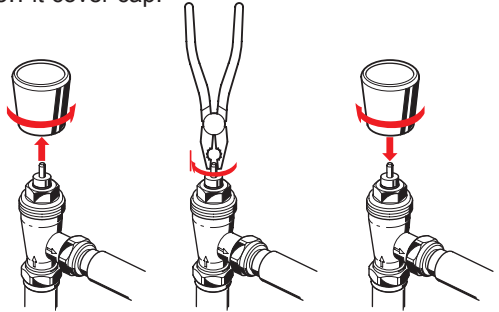
closed 6°C 8°C 12°C 16°C 20°C 23°C 26°C

These temperatures are for guidance only and are based on horizontal mounting on the flow pipe. If the radiator thermostat is installed in any other direction then the temperature will vary by 1°C to 2°C.

**Note:** Heating can freeze when thermostats with zero position are set at position „0“.

## 7. To shut off the lockshield valve

1. Unscrew and remove cover cap.
2. Turn the spindle clockwise till stop by using a pliers
3. Fit cover cap.



## 8. Service

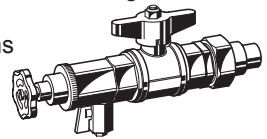
### 8.1 Decorator cap

When removing the radiator for any reason the decorator's cap supplied with the valve should be used to isolate the flow.

### 8.2 Servicing

Use the service tool VA8200A001 for cleaning or replacement of the valve seating without draining the system.

For further information see separate manual.



## 9. Disposal

Observe the local requirements regarding correct waste recycling/disposal.