

## Mi Series™

Complete control solutions.  
Designed for you.



# Innovation

We adapt, grow and swiftly change for a sustainable future.

Drayton is part of Invensys, a global technology group leading the way in the design and manufacture of environmentally optimised products. At Invensys, one of our values is innovation: we adapt, grow and swiftly change for a sustainable future. This value is reflected in all aspects of our business.

Drayton has an ongoing research and development programme, which actively anticipates market trends and exploits new technology in order to introduce innovative products. Our focus is on creating products that are easy-to-use for both installers and end users, and to enable total heating control suitable for any lifestyle and heating system.

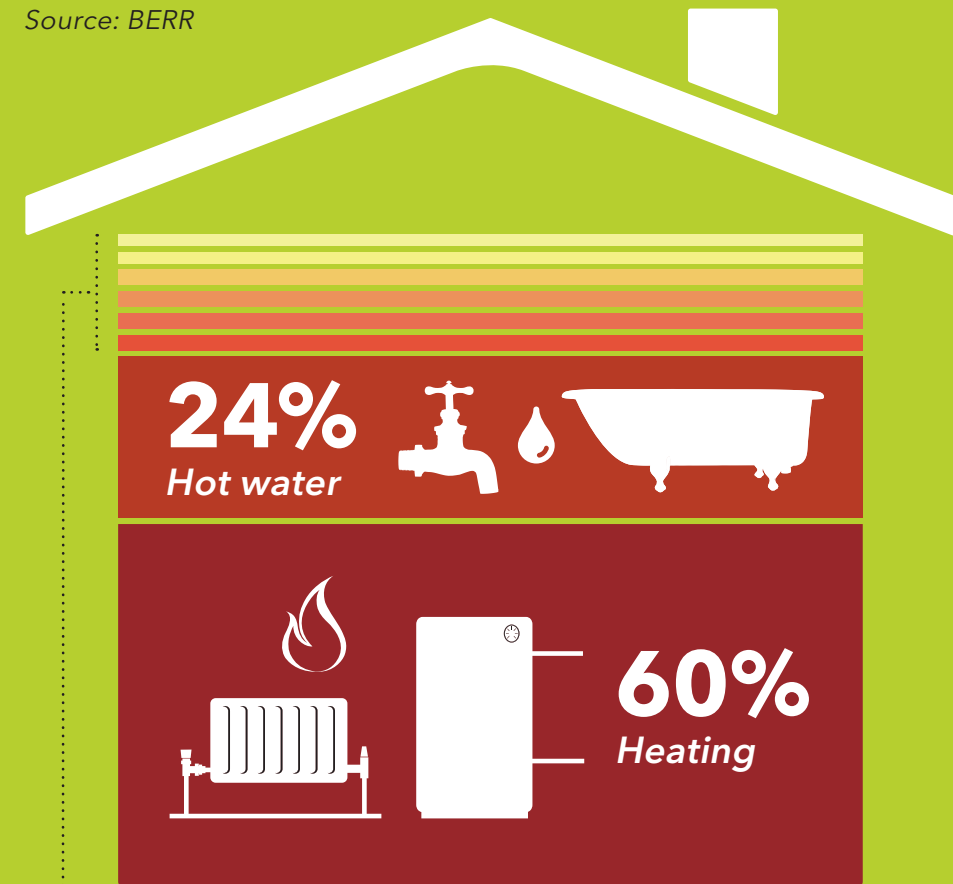
Drayton were the first in the UK to launch a range of wireless thermostats; we were one of the first to launch an energy efficient A rated TRV, and now we are pleased to introduce the Drayton **Mi** Series.

Drayton **Mi** Series combines sleek contemporary style, simple programming, and a wealth of practical features to bring you the next generation of heating controls...



Over 80% of domestic energy consumption is used on the generation of heating and hot water – this is quadruple the amount spent on lights, tumble dryers, washing machines, cookers, televisions and other household appliances all put together. If homeowners really understood the positive impact heating controls could have on their fuel bills they would soon take advantage of the significant benefits they bring.

Source: BERR



Other 2% | Wet appliances 2% | Lighting 3% | Cooking 3% | Consumer electronics 3% | Cold appliances 3%

### Facts for the homeowner

- 84% of domestic energy consumption goes on heating and hot water
- Heating and hot water accounts for 70% of domestic carbon emissions
- 83% of homes do not meet the minimum recommended control requirements
- Homeowners can reduce heating bills by up to 23% by installing heating controls
- By installing a thermostat homeowners can save 10% on their heating bills
- Fit a hot water thermostat and insulate your water tank, and you can save £70 a year

## Make Mi Series your choice

The design of the **Mi Series** has been carefully constructed to bring you an all-encompassing heating control solution that incorporates practical functionality and visual design.

The suite of controls offers consistent contemporary styling and universally recognised buttons for ease of use.

### An all-encompassing solution

#### Full product range

**Mi Series** features a room thermostat, programmable room thermostat, cylinder thermostat and a range of timeswitches and programmers. Each product is available as an individual unit, and we offer a range of pre-bound wireless control packs providing a complete solution.

### Advanced wireless connectivity

868 MHz frequency provides a more robust connection, two-way wireless communication enhances reliability, and the signal strength indicator ensures optimum positioning every time. What's more, every wireless device is pre-bound with the receiver for ease of installation.

**"We have combined the crème de la crème of wireless technology to provide our customers with a totally reliable and robust solution that will save them time and money."**

Engineering Director

## Make Mi Series your choice

# Mi Series™ Making Your Life Easier

Featuring new  
**easitext™**  
On screen step-by-step guide

One of the unique features of the **Mi Series** is how simple it is to programme and use. Specially developed **easitext** software provides on screen guidance that makes it straightforward for everyone to programme and use their stylish controls. Step-by-step on screen directions means users may never need to look at their instruction manual.

The button configuration and symbols have been carefully designed to make them instantly recognisable, much like that of a remote control or mobile phone. Directional arrows make it simple to scroll through the screens, the universally recognised home button means users can instantly navigate back to the main menu, and the handy 'back' button allows you to go back one screen at a time to make any adjustments.

**Easitext for easy use.**

## Mi Series™

### MiTime™



A range of three programmers for accurate time control

### MiStat RF™



Room, programmable and cylinder thermostats for temperature control

### MiTime RF™

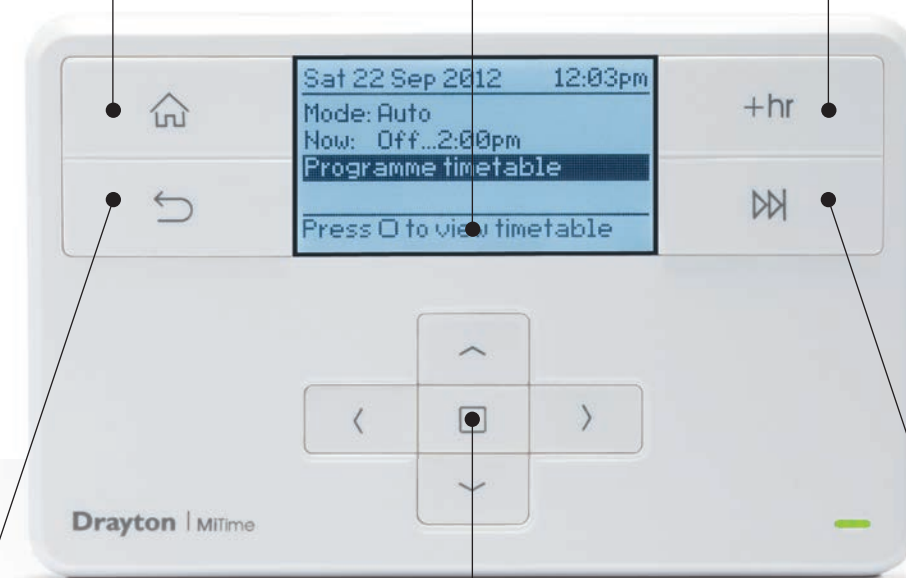


Combined product packs offering a wireless control package for every installation

**Home**  
Press to go back to the home screen at any time

**Boost**  
Provides 1, 2, 3 hours of heat boost at the touch of a button

**Easitext Guide**  
On screen instructions, guide you through the programming



**Back**  
Back button takes you back screen-by-screen

**Simple Navigation**  
Familiar buttons and universally recognised symbols make it easy to navigate around the control, and programme as required

**Advance**  
Press to advance programme to the next on or off period



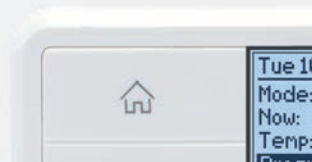
## Easy Programming

The complete **Mi Series** range couldn't be easier to programme thanks to **easitext on-screen step-by-step instructions** that guide you through each stage of programming the control.

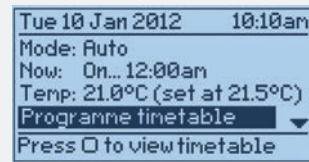
The on screen instructions combined with the familiar navigation buttons makes the whole process quick, simple and hassle free. Thanks to **easitext** users may never need to look at their instruction manual

Below are some examples of how simple it is to programme **Mi Series**, but why not try our programming simulator available now at [www.easitext.co.uk](http://www.easitext.co.uk).

### Programming example: Change the programme schedule in 3 easy steps (Model MT710R shown)

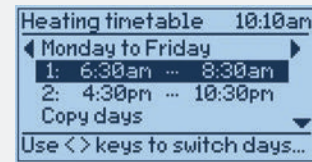


Press to go back to the home screen.



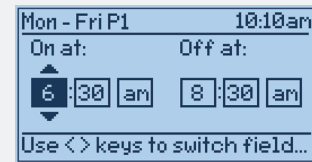
#### Step 1

Scroll down to 'Programme timetable' and press select .



#### Step 2

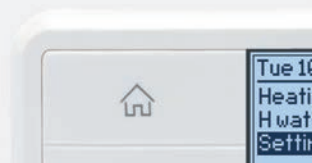
Scroll and select the time period you want to amend. Use the horizontal arrows to change days.



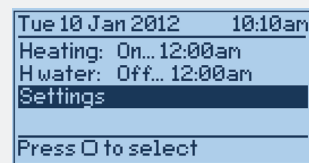
#### Step 3

Use the vertical arrows to change the time and the horizontal arrows to move to the next field. Press select to confirm.

### Programming example: Setting the holiday mode (Model MT721R shown)

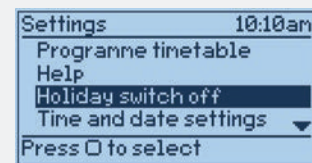


Press to go back to the home screen.



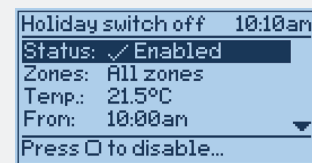
#### Step 1

Scroll to 'Settings' and press select .



#### Step 2

Scroll to 'Holiday switch off' and press select .



#### Step 3

Scroll to the required setting and adjust as required. Remember to set the status to 'Enabled' to complete.

## Research Feedback

In research\* carried out 90% of consumers and installers could programme the device without even looking at the instructions and gave positive feedback...

**"So easy they can do it without the instructions."**

Installer

**"Smashing concept."**

Homeowner

**"We've just done the two main functions in 30 seconds with no instructions."**

Homeowner

**"Once you've done it a couple of times it's a five second job."**

Homeowner



Scan to test out our **easitext** programming simulator.

Featuring new  
**easitext**<sup>™</sup>  
On screen step-by-step guide

\*Independent qualitative research carried out with 40 participants.

# Drayton

## Mi Series™

**Sales:** +44 (0) 845 130 5522 | **Technical:** +44 (0) 845 130 7722 | **Fax:** +44 (0) 845 130 0622 | **Email:** customer.care@invensys.com

Drayton products are available from all leading builders and plumbers merchants. Drayton is part of the Invensys Group.



Get all the information  
[www.draytoncontrols.co.uk](http://www.draytoncontrols.co.uk)



Hear all the news first  
[@DraytonHeating](https://twitter.com/DraytonHeating)



See our products in action  
[www.youtube.com/draytoncontrols](http://www.youtube.com/draytoncontrols)

**EU Design Regs:- 002180638-1/2/3**



Available from:

**Reference number: D112**

**i n v e n s y s**<sup>™</sup>

In accordance with our continuous improvement procedures, we reserve the right to change design features and specifications without prior notification. The Data contained in this document is for guidance only. Invensys Controls accepts no liability for any consequential losses, injury or damage resulting from the use of this document or the information contained within.