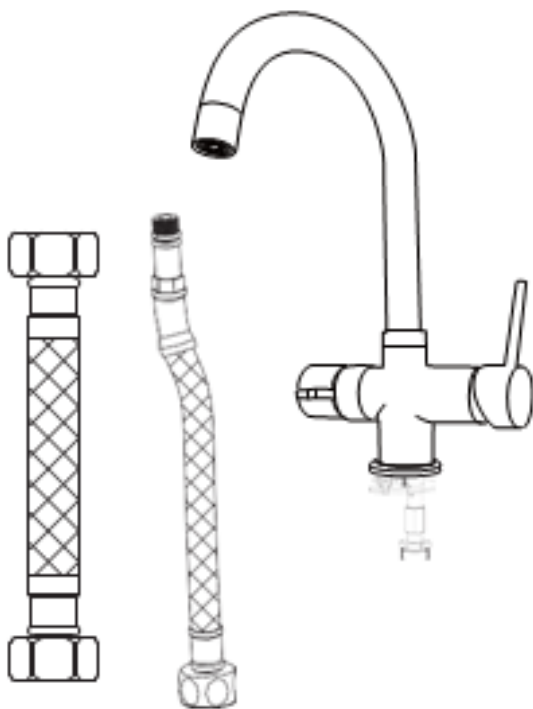


BOILING WATER TAP

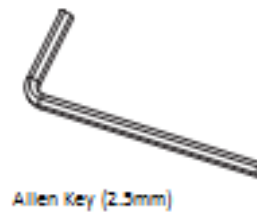
Installation Instructions.

Before Installation

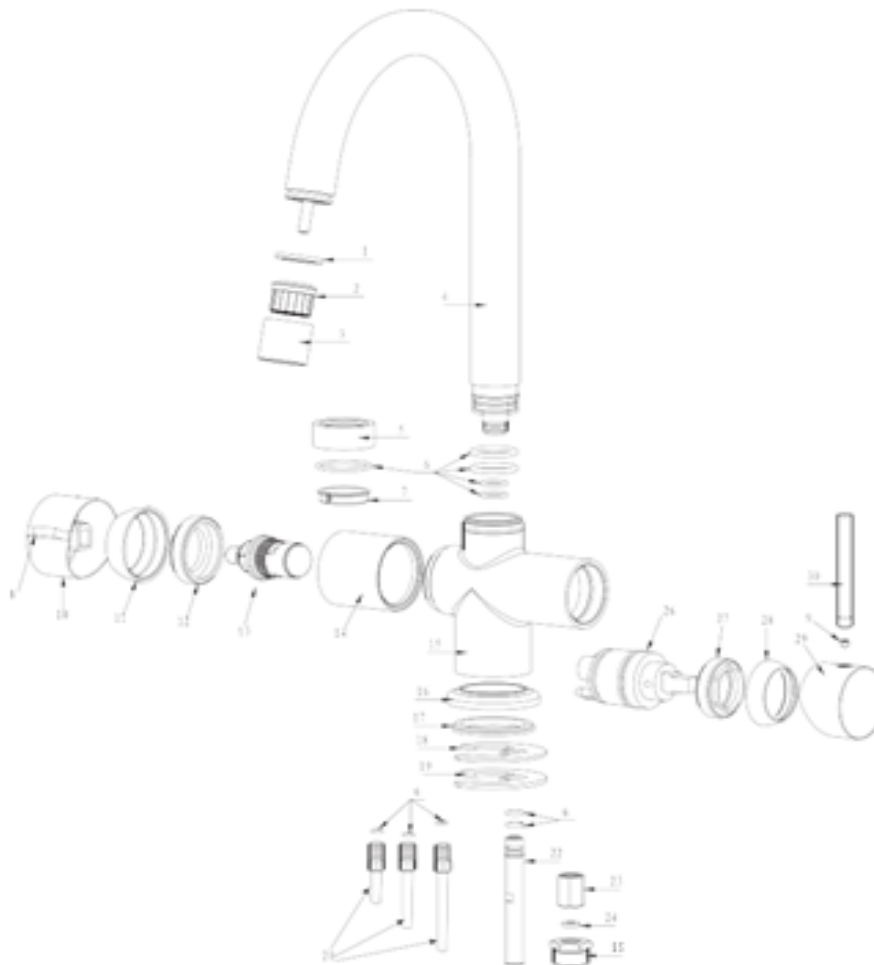
Please check to ensure you have the parts shown below:



Tools you will need

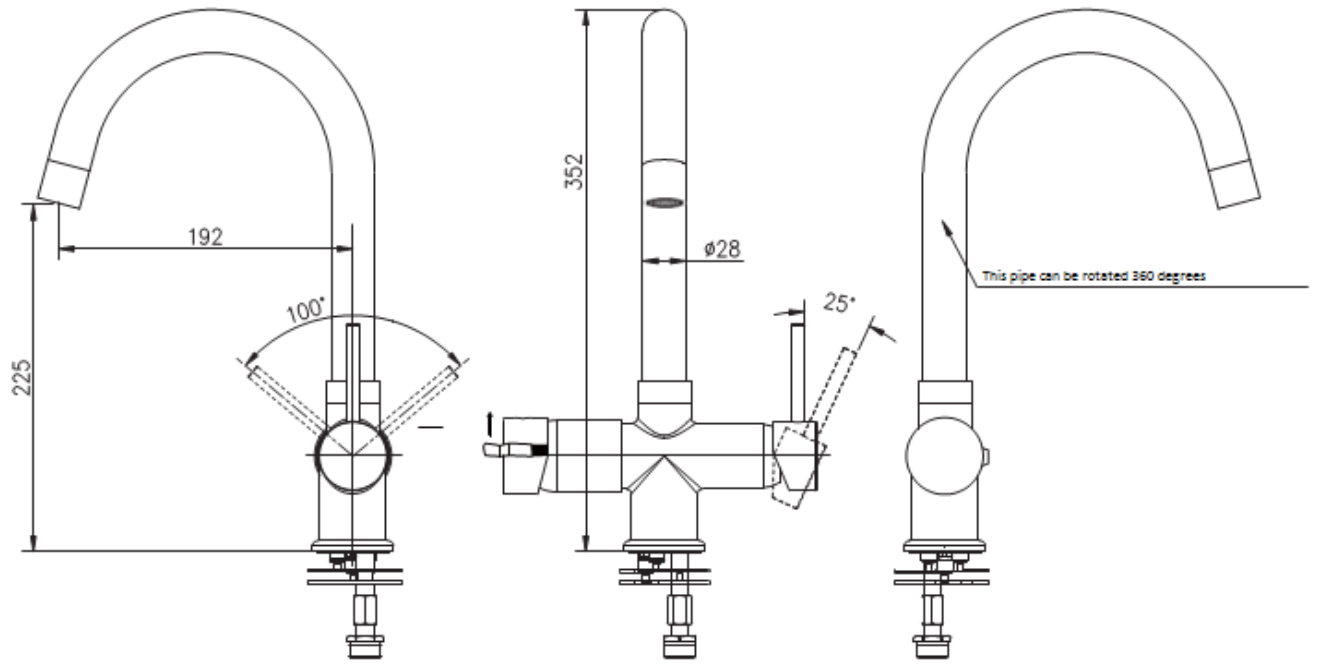


REPLACEMENT PARTS



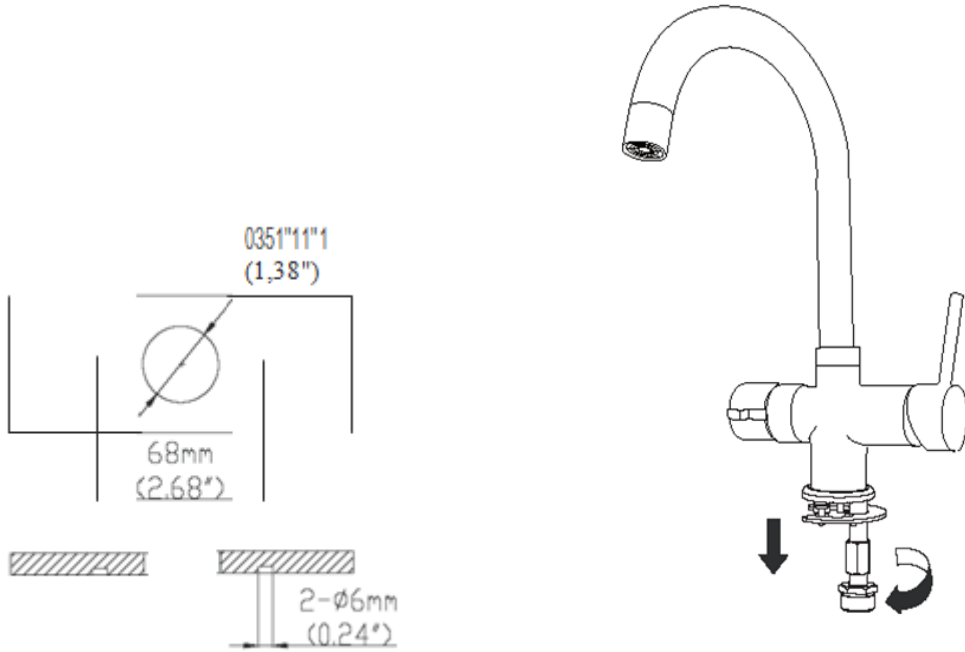
1. Flatwasher
2. Bubbler core
3. Bubbler jacket
4. Spout assembly
5. Copper Sleeve
6. O-ring
7. Gasket
8. Latch
9. Locking screw
10. Knob
11. Cartridge cover
12. Cartridge fastener
13. Cartridge
14. Copper Sleeve
15. Faucet body
16. Seat
17. Gasket
18. Gasket
19. Stainless steel gasket
20. Water inlet pipe
21. Water inlet pipe
22. Connector
23. Flat gasket
24. Union
25. Plastic cover
26. Cartridge fastener
27. Cartridge cover
28. Handle body
29. Handle

PRODUCT DIMENSIONS

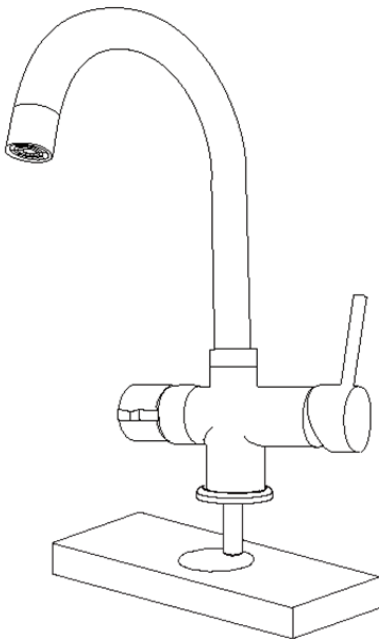


Tap Installation Procedures

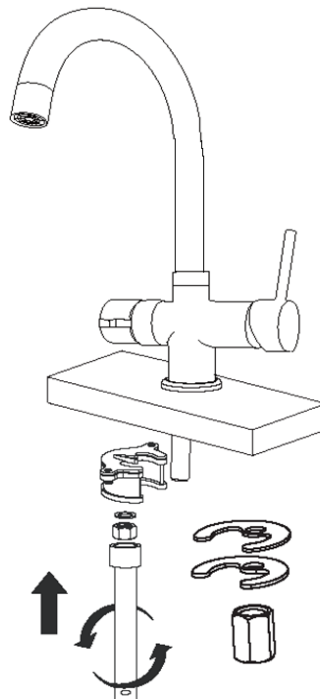
Step 1



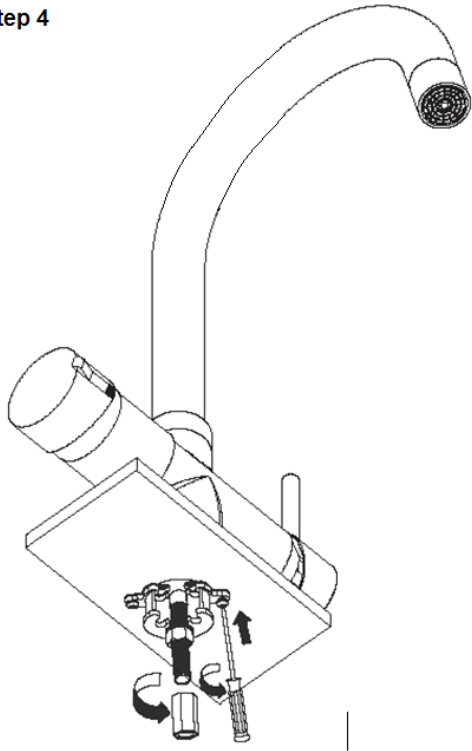
Step 2



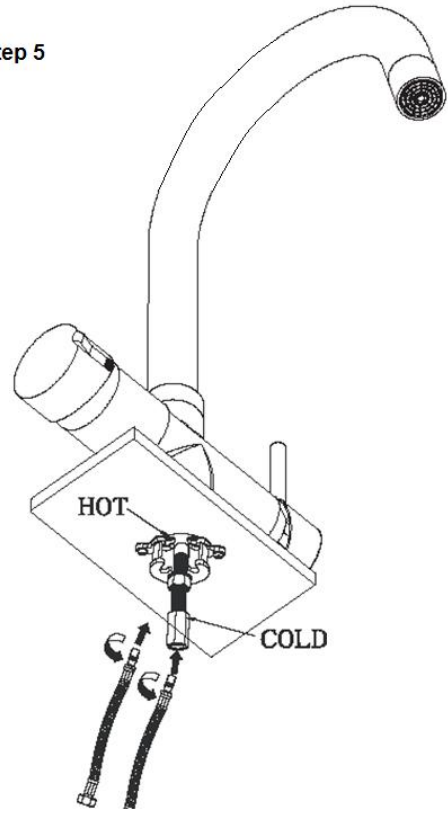
Step 3



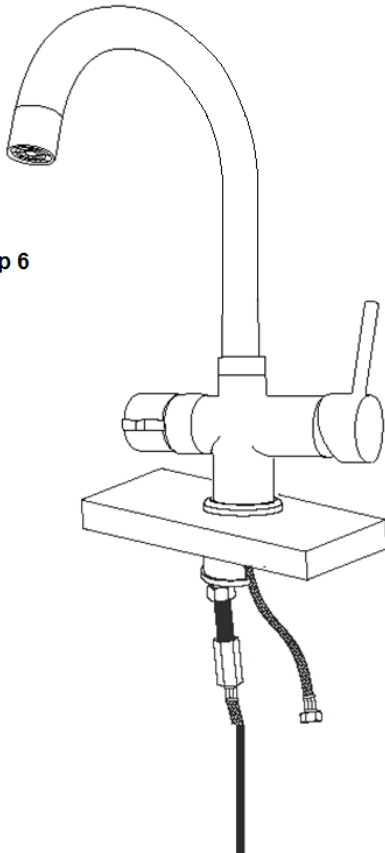
Step 4



Step 5



Step 6

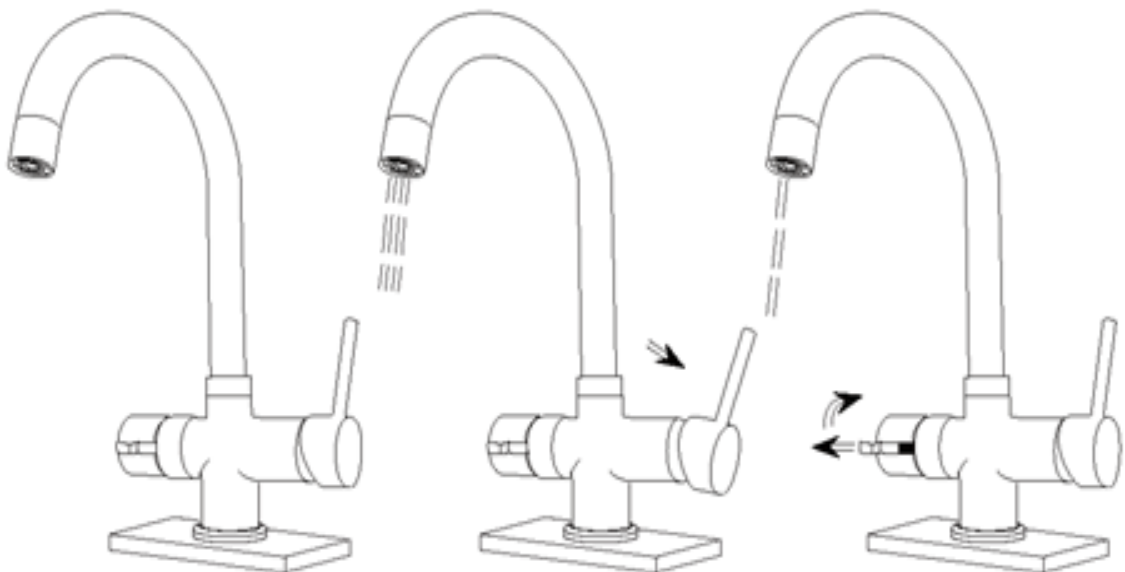


Step 7

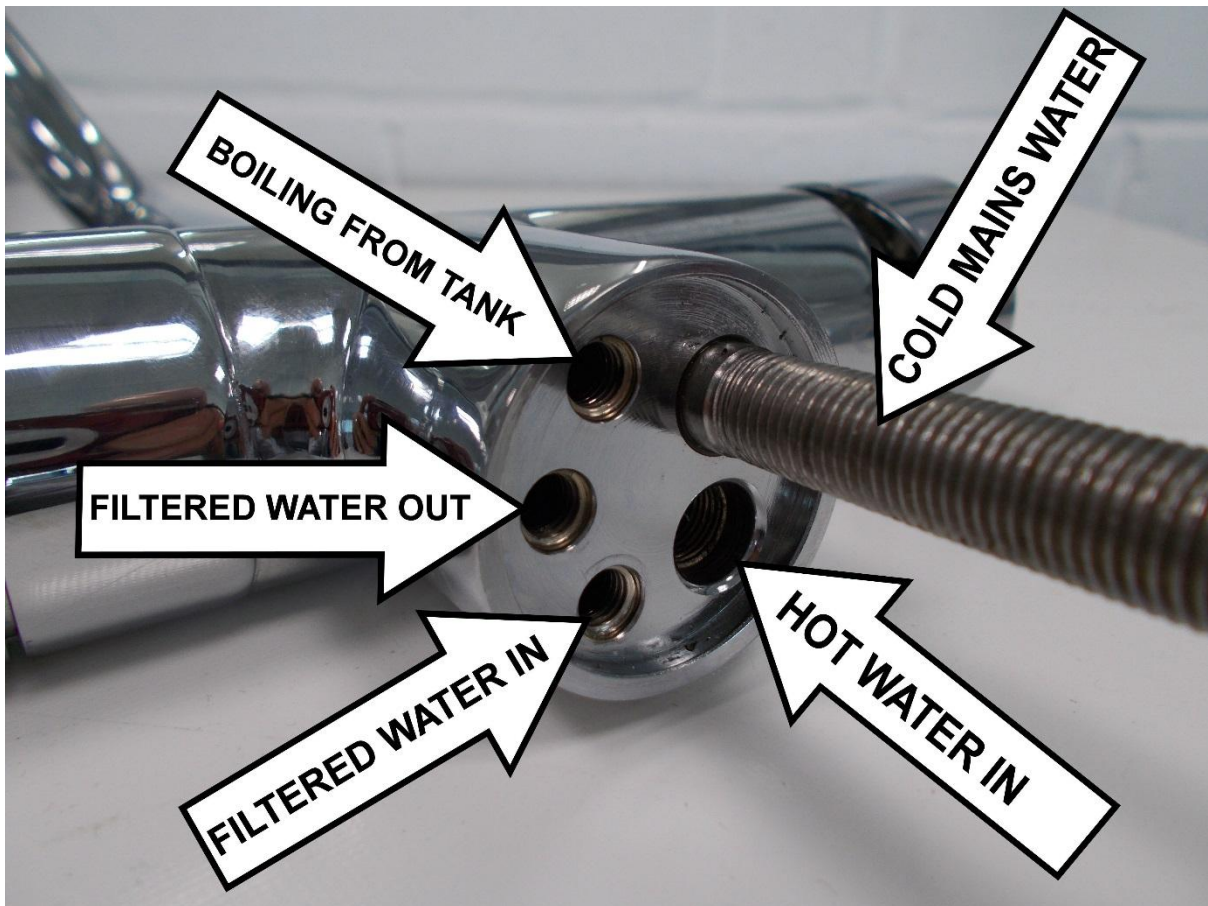
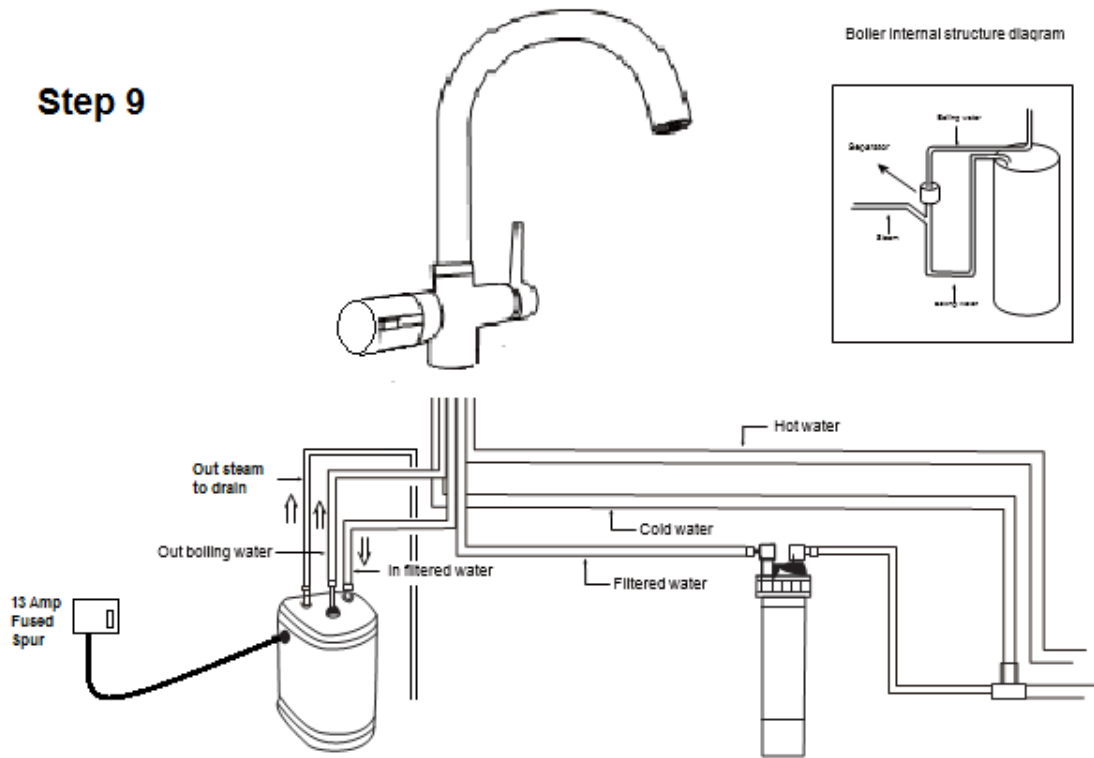


Please ensure that the hoses and connections are flushed with clean water prior to final assembly to prevent blockages in the tap unit due to particles and contaminants.

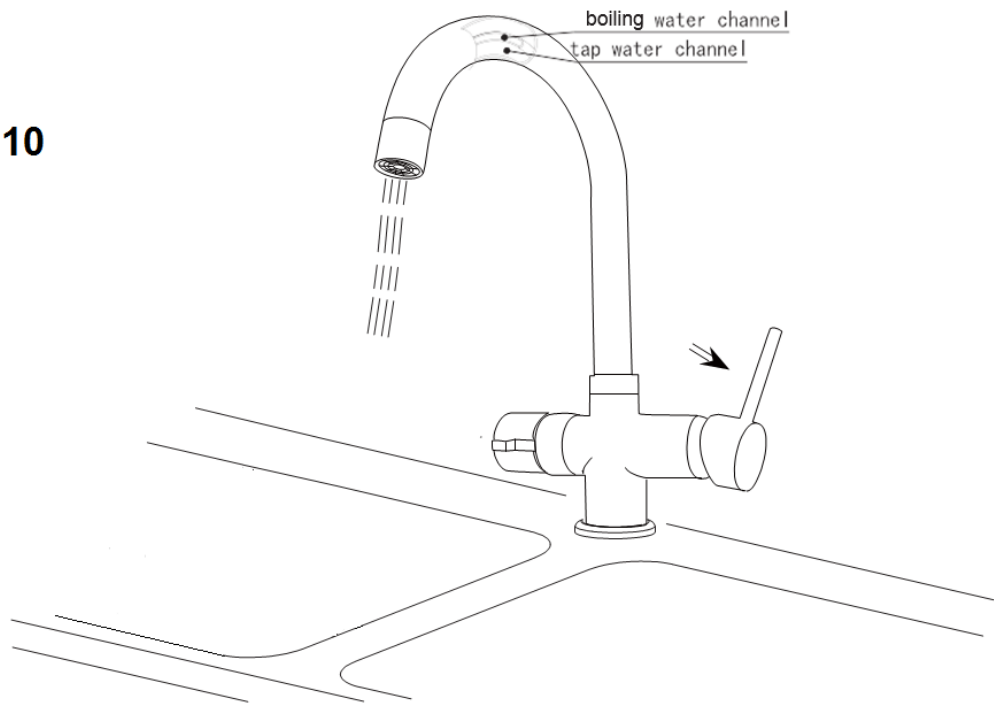
Step 8



Step 9



Step 10



Step 11

