

OPAC

Thermostatic Exposed Shower Valve Only with Handwheel

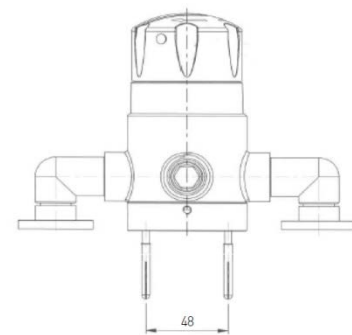
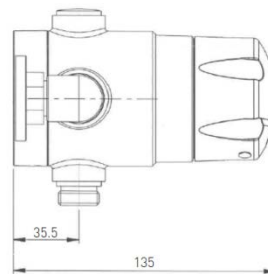
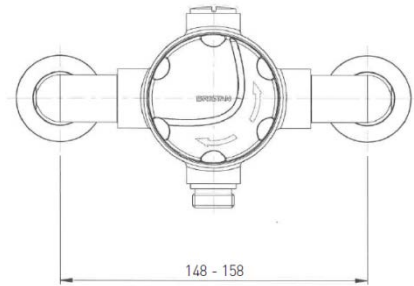
Product Specification

Product Code:	OP TS1503 EH C
Finish:	Chrome
Product Type:	Commercial
Construction:	Body is of brass construction and is designed to conform to BS EN 1111:1999 (HP) & BS EN 1287:1999 (LP)
Valve Type:	Thermostatic Cartridge
Supply:	Suitable for all plumbing systems (Preferably balanced)
Inlet Connections:	15mm compression elbows
Outlet Connections:	½" BSP
Working Pressures:	Min 0.2bar, Max 8.0bar
Dimensions for Fitting:	148-158mm adjustable inlet centres



Additional Information

- Single sequential control for both temperature & flow.
- Automatic thermostatic shut-off in the event of hot or cold water failure.
- Check valves and serviceable filters as standard
- Supplied as 'valve only' and thus can be customised by choosing accessories from our Pick 'N' Mix showering options. Please see our Product and Price guide for details.
- Adjustable inlet centres between 148-158mm.
- Chrome plated to BS EN 248.



Flow Rates (litres per minute)

System Pressure	0.2bar	0.5bar	1bar	2bar	3bar	4bar	5bar
Flow Limiter Fitted	4.6	6.8	7.1	8.1	8.6	8.9	9.0

Compliance / Approvals

WRAS:	Certificate N ^o : 1311021
TMV3:	Certificate N ^o : BC397/1208

Technical Advice: For further information please call 0844 7016273 or email customercare@bristan.com

Guarantee: 1 year covering manufacturing faults.