

# BRISTAN

TAPS & SHOWERS

## Installation Instructions & User Guide

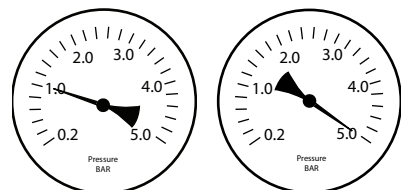
Please leave these instructions with  
the end user

Product code: TFP3005IR (D1)

### Specifications

#### Operating Water Pressure

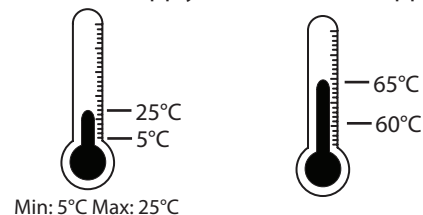
Min: 1.0bar Max: 5.0bar



Maximum Static Pressure: 10.0bar

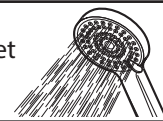
#### Inlet water temperature

Cold Water Supply Hot Water Supply



Min: 5°C Max: 25°C

Factory pre-set  
41°C



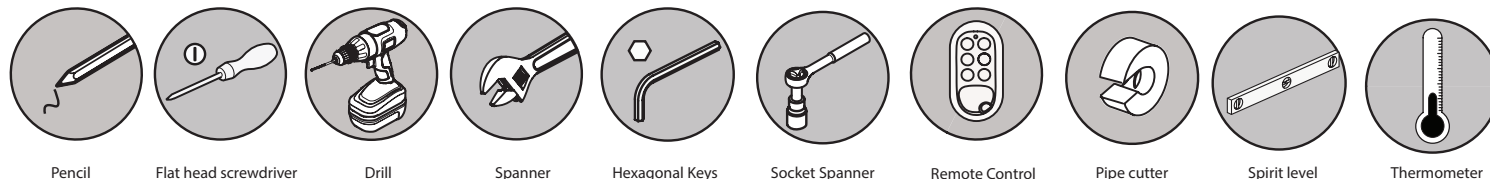
**IMPORTANT**  
The inlet hot water must be at  
least 10°C above the required  
blend temperature.

#### Inlet Connections 15mm Compression



**Power Supply:**  
DC- 6V (4 x Alkaline LR6 1.5 V AA,  
preferably 2000mAh, not supplied)  
**Power Consumption:**  
Static- <0.3MW  
Active- <3W  
Sensing Range: 50mm to 160mm  
(+/- 10%)

### Tools You'll need



### Prior to Installation

All products manufactured and supplied by Bristan are safe provided they are installed, used correctly and receive regular maintenance in accordance with these instructions

This product needs to be installed in accordance with, and meet the requirements of the Water Supply (Water Fittings) Regulations 1999 and Scottish Byelaws 2004.

For product specific installation requirements, please visit [www.wras.co.uk](http://www.wras.co.uk)

Isolation valves must be fitted to the inlet water supplies to ensure ease of future maintenance.

Before installing this product the water supply must be thoroughly flushed in order to remove any swarf, solder etc.

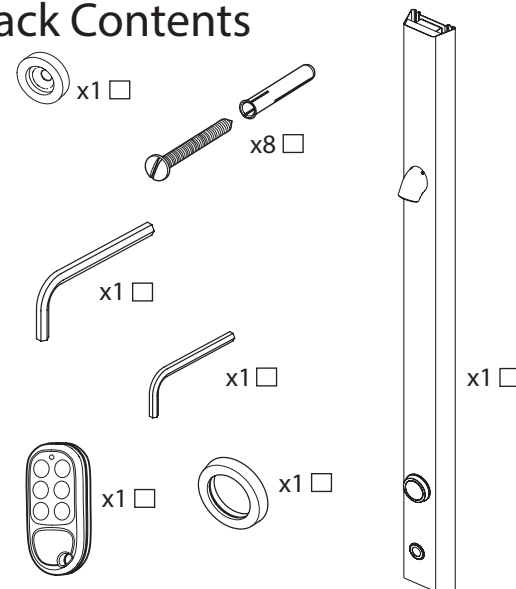
This product must not be modified in any way as this will invalidate the guarantee.

Full access must be made available for future maintenance / servicing purposes.

If in doubt, contact a registered plumber or your Local Water Authority or the Secretary of the Institute of Plumbing, address as follows:-

The Institute of Plumbing,  
64 Station Lane,  
Hornchurch,  
Essex,  
RM12 6NB, Tel: 01708 472791

### Pack Contents



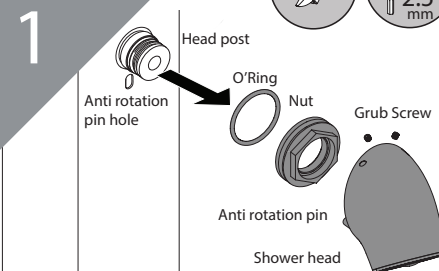
### Why not visit our Youtube channel

To see our latest how-to videos,  
simply scan the QR code with  
your smart phone or tablet.

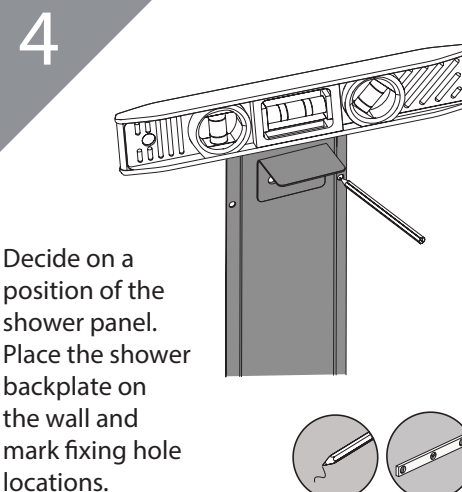


Alternatively visit [www.youtube.com/bristanTV](http://www.youtube.com/bristanTV)

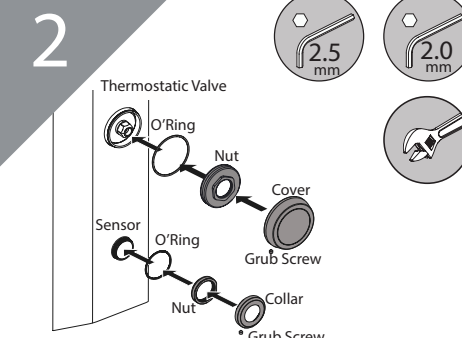
### Installation



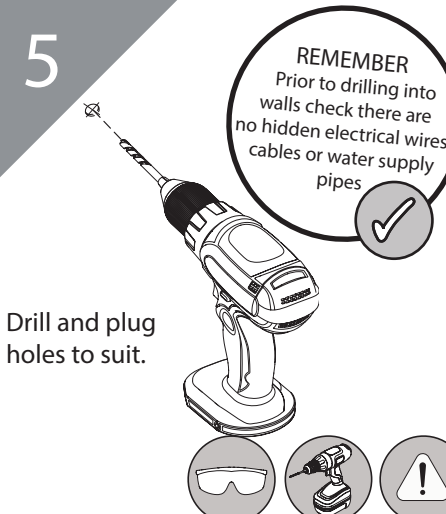
Loosen shower head grub screws,  
remove the shower head, unscrew  
the nut and remove the o-ring and  
anti rotation pin from the panel.



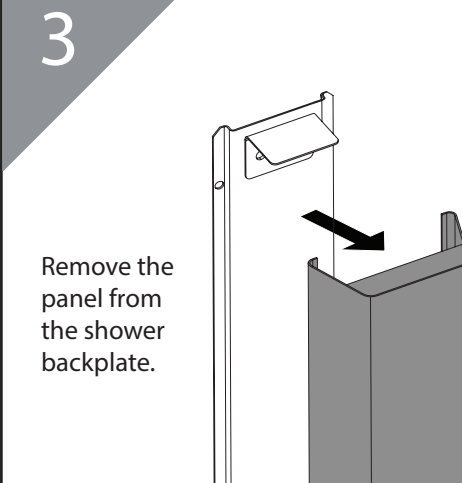
Decide on a  
position of the  
shower panel.  
Place the shower  
backplate on  
the wall and  
mark fixing hole  
locations.



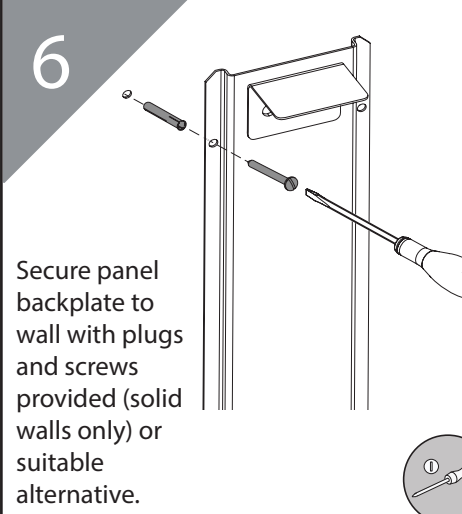
Loosen the sensor/valve grub  
screws, remove the collar/  
cover, remove the nuts and the  
O-rings from the shower panel.



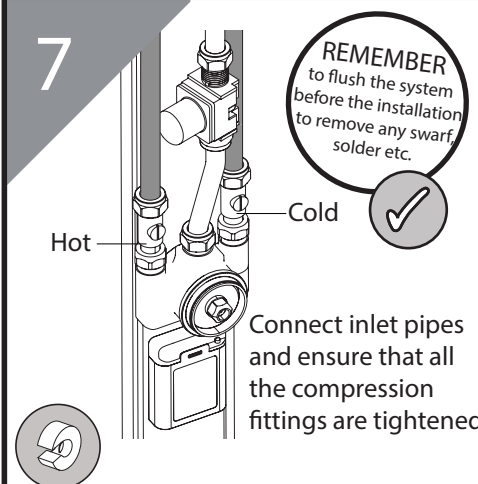
Drill and plug  
holes to suit.



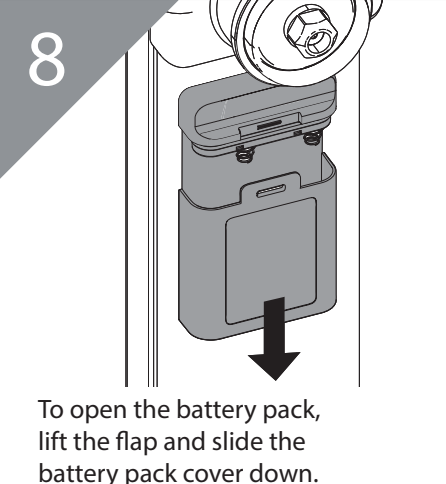
Remove the  
panel from  
the shower  
backplate.



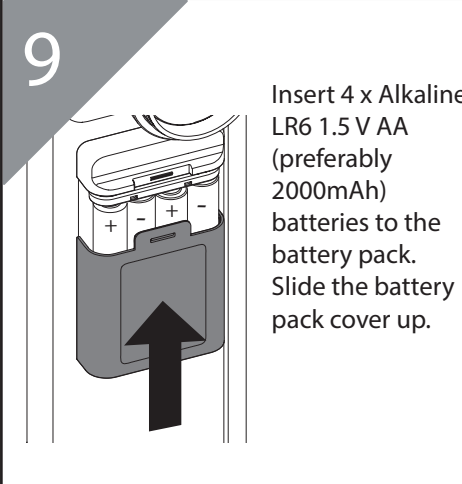
Secure panel  
backplate to  
wall with plugs  
and screws  
provided (solid  
walls only) or  
suitable  
alternative.



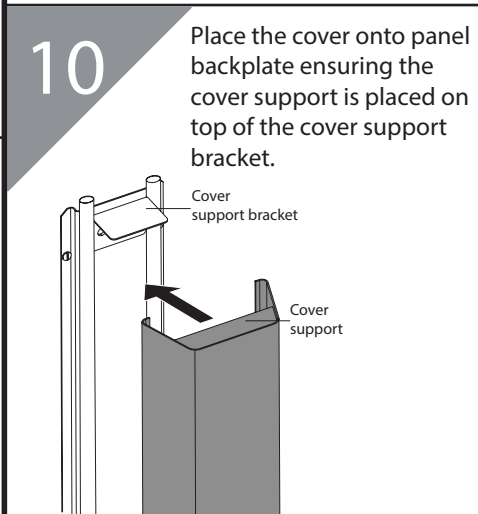
Connect inlet pipes  
and ensure that all  
the compression  
fittings are tightened.



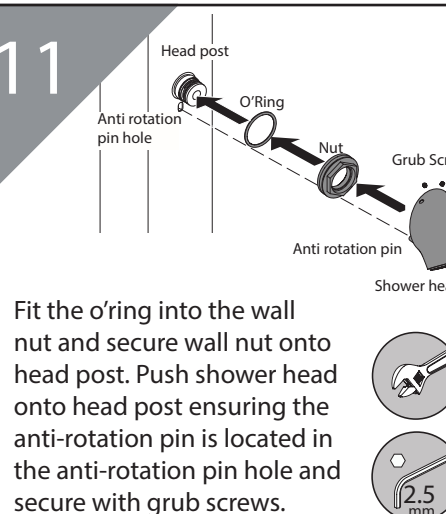
To open the battery pack,  
lift the flap and slide  
the battery pack  
cover down.



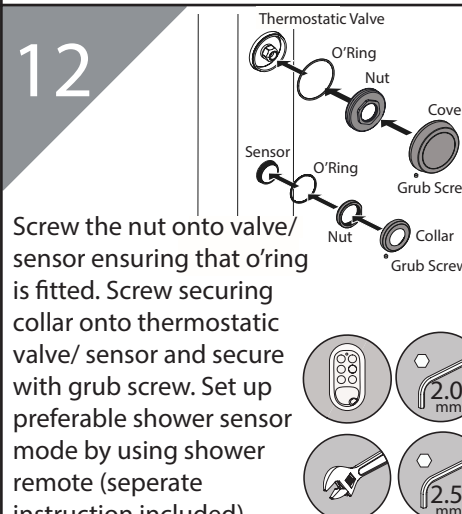
Insert 4 x Alkaline  
LR6 1.5 V AA  
(preferably  
2000mAh)  
batteries to the  
battery pack.  
Slide the battery  
pack cover up.



Place the cover onto panel  
backplate ensuring the  
cover support is placed on  
top of the cover support  
bracket.



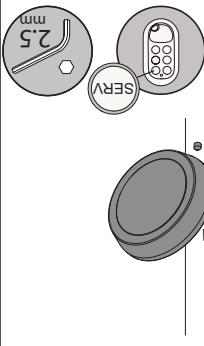
Fit the o-ring into the wall  
nut and secure wall nut onto  
head post. Push shower head  
onto head post ensuring the  
anti-rotation pin is located in  
the anti-rotation pin hole and  
secure with grub screws.



Screw the nut onto valve/  
sensor ensuring that o-ring  
is fitted. Screw securing  
collar onto thermostatic  
valve/ sensor and secure  
with grub screw. Set up  
preferable shower sensor  
mode by using shower  
remote (separate  
instruction included)

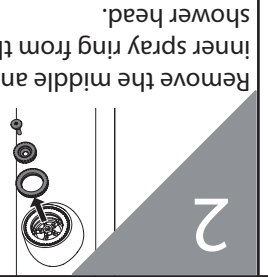
## Commissioning

1 Turn Service Mode on and remove the cover, letting it flow to stabilise the temperature. Turn Service Mode off.

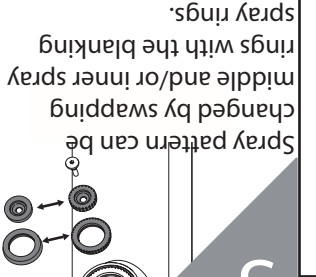


## Spray Pattern Adjusting

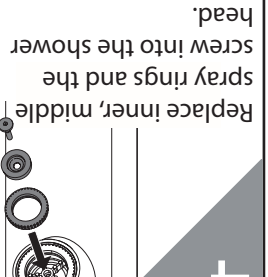
1 Turn Service Mode on, remove the screw in the shower head.



2 Remove the middle and inner spray ring from the shower head.



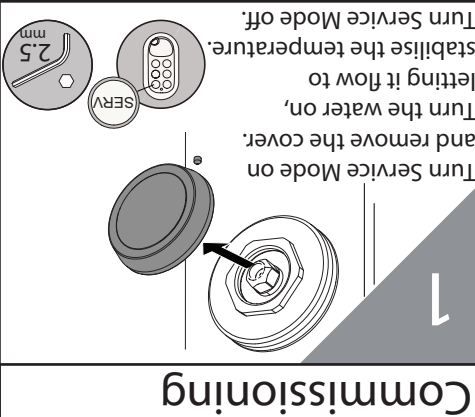
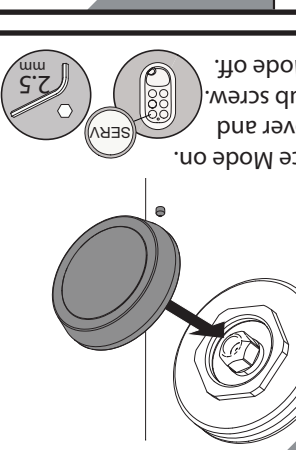
3 Spray pattern can be changed by swapping rings with the blanking spray rings.



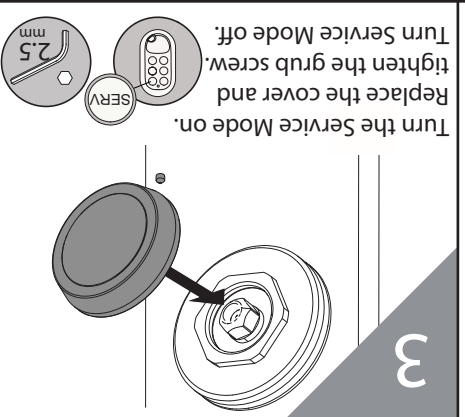
4 Replace inner, middle spray rings and the screw into the shower head.



5 Tighten the screw and turn Service mode off.

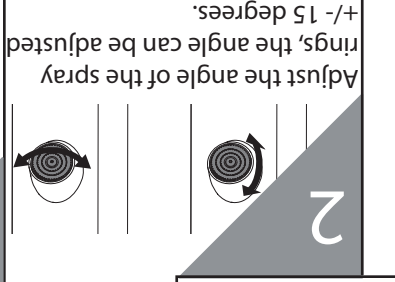


2 Insert the hexagonal key in the front of the 'valve head', turn clockwise to decrease temperature and anti-clockwise to increase it.



## Spray Pattern Angle

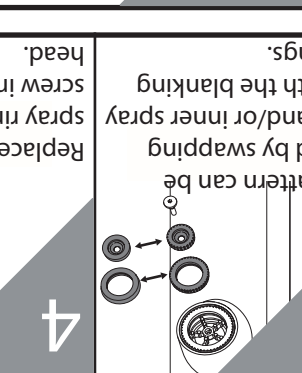
1 Turn Service Mode on then loosen the screw in the shower head.



2 Adjust the angle of the spray rings, the angle can be adjusted +/- 15 degrees.



3 Tighten the screw and turn Service Mode off.



Servicing Intervals  
To reduce the build up of limescale and to ensure this shower works to its maximum performance we recommend this shower is serviced every 6-12 months depending on the hardness of your water.

Spare Parts  
To replace any spare parts for your shower why not scan the QR Code and search for your product.



## Maintenance - Cartridge Cleaning

1 Turn the Service Mode on and follow the installation steps from 1 to 3.



2 Turn the piston assembly and the cartridge into the body. Secure in place by tightening the cartridge nut.



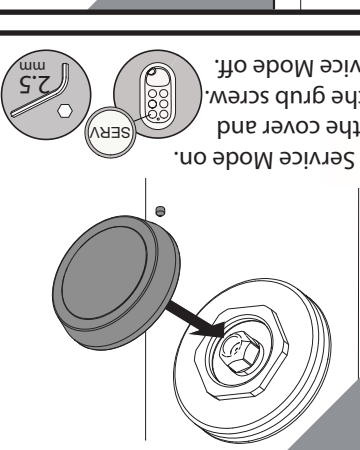
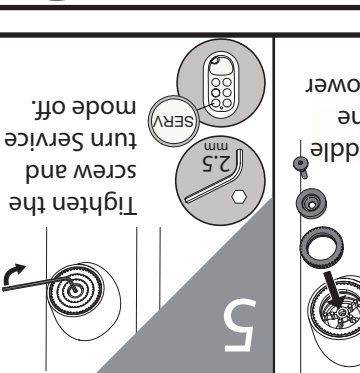
3 Unscrew the cartridge. Ensure you DO NOT damage the valve, pipe work or backplate.



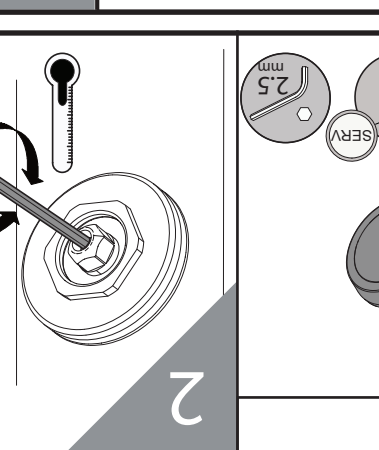
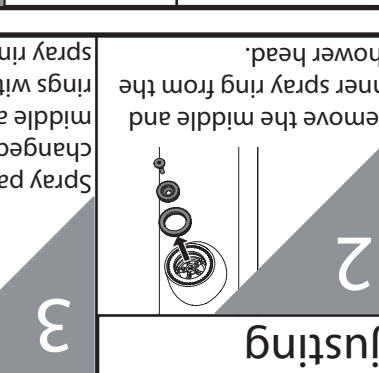
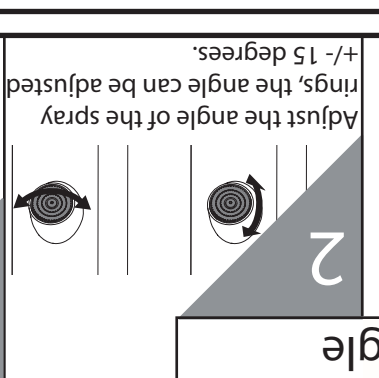
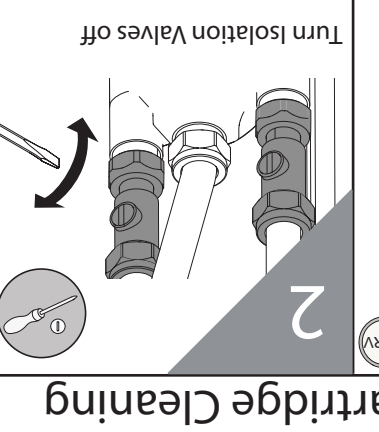
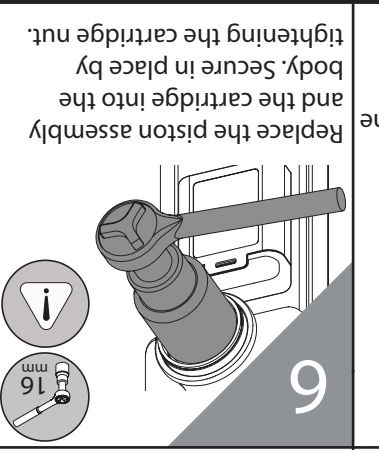
4 Remove the cartridge and the piston.



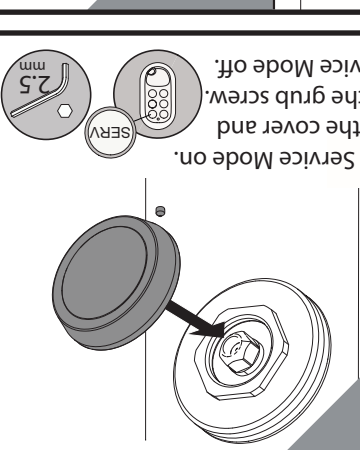
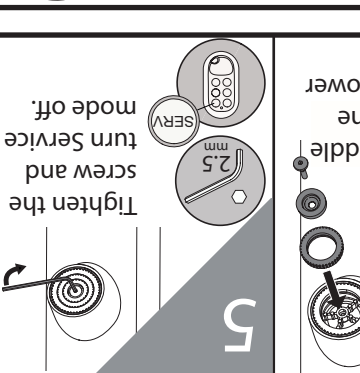
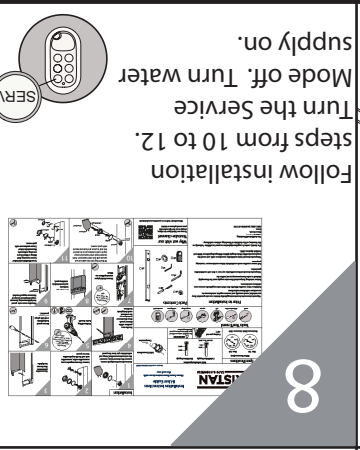
5 Follow installation steps from 10 to 12. Turn water supply on.



5 Remove any O-rings, soak all components in descaler and wash off in clean water. Examine all seals and replace if needed. Use WRAS approved silicon based grease on all seals.



6 Replace the piston assembly and the cartridge into the body. Secure in place by tightening the cartridge nut.



## Battery Replacement

1 Turn the Service Mode on. Follow the installation steps from 1 to 3.



2 To open the battery pack, lift the flap and slide the battery pack cover down.



3 Replace batteries (4 x Alkaline LR6 1.5 V AA, preferably 2000mAh)



4 Slide the battery pack cover up.



5 Follow the installation steps from 10 to 12. Turn the Service Mode off.

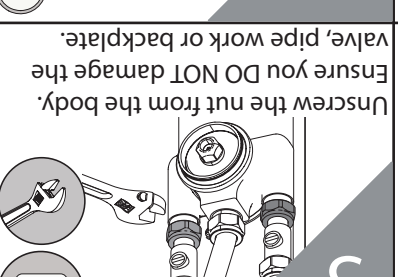


## Servicing- flow limiters and filters

1 Turn the Service Mode on and turn water supply off. Follow the installation steps from 1 to 3.



2 Turn Isolation Valves off.



3 Unscrew the nut from the body. Ensure you DO NOT damage the valve, pipe work or backplate.



4 Examine the filters and the flow limiters, clean or replace if necessary.



5 We recommend to clean the panel with damp cloth and mild soap. NEVER use abrasive detergents



## Troubleshooting

Symptom	Cause	Remedy
No flow or low flow rate	partially closed isolation valve.	Open isolation valve.
	Instantaneous water heater cycles on and off as flow rate or pressure is too low.	Increase water flow rate or pressure through system.
	Head of water is below the minimum distance required.	Minimum 2 meters required.
	Airlock or partial blockage in the supply pipework.	Flush through pipework to ensure removal of debris and any airlocks.
Reduced or irregular spray pattern	Build up of debris in the shower head.	Refer to the 'Spray pattern' section. Clean the shower head inserts in the descaler.
Water dripping from shower	This is normal for a short time after using the shower.	This is caused by capillary action, the build up of water in the shower.
If water continues to drip	Please contact Customer Service at Bristan.	
Shower does not turn on	Closed isolation valve.	Open isolation valve.
	Mains water supply turned off.	Turn on mains water supply.
	Battery failure (sensor will flash 8 times)	Refer to the 'Battery replacement' section

At Bristan, we want to make things as easy as possible for our customers. That's why we offer solid guarantees on all our products, effective from the date of purchase, to give you peace of mind.

To start your free guarantee simply scan the QR code and register your product, alternatively visit [www.bristan.com/register](http://www.bristan.com/register).

For any other queries, please call our Customer Service on 03300266273 where our expert team of advisors will be able to offer you any help and advice.

For full guarantee terms and conditions visit [www.bristan.com/guarantees](http://www.bristan.com/guarantees).



We Know & We Care