

Easi-Heat Plus

combi

system

open vent



RANGE 25C, 29C, 32C, 24S, 30S & 18V ■

ErP CLASS A ■

5 YEAR WARRANTY ■

TIME CLOCK ON COMBI VERSION ■

LIGHTWEIGHT WITH COMPACT DIMENSIONS ■

EASI-HEAT PLUS

HIGH EFFICIENCY BOILERS

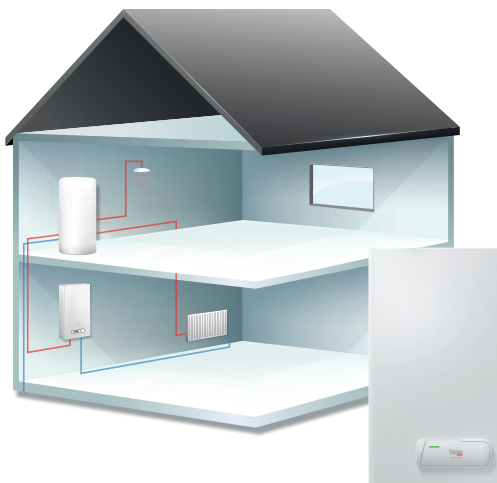


Combi boilers

A combi (combination) boiler provides heat for central heating and domestic hot water on demand.

A combi boiler is the best option if you want to:

- Replace an existing combi boiler and are happy with the performance it provides
- Use the loft space or airing cupboard for another purpose and want to remove the tanks and hot water storage cylinder
- Have instant hot water on demand
- Save space

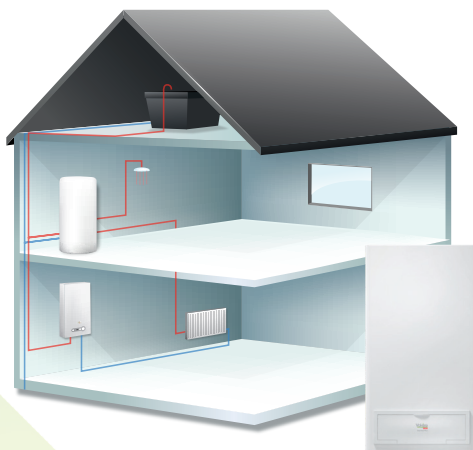


System boilers

A system boiler is installed as part of a sealed central heating system. It's not open to atmospheric pressure because the system is kept within a closed circuit.

A system boiler is the best option if you want to:

- Replace an existing system boiler and are happy with the performance your system boiler provides
- Provide hot water to be used by more than one bathroom at once using an unvented cylinder
- Reduce system pipework
- Remove feed and expansion tanks for your current boiler that are in your loft space



Open vent boilers

Open vent means that the heating system is open to atmospheric pressure, with feed and expansion tanks in your loft space.

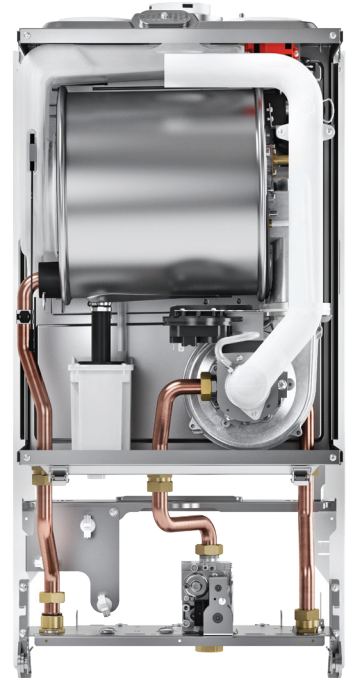
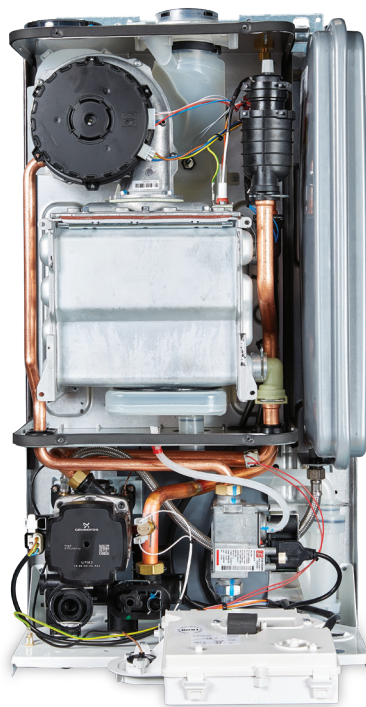
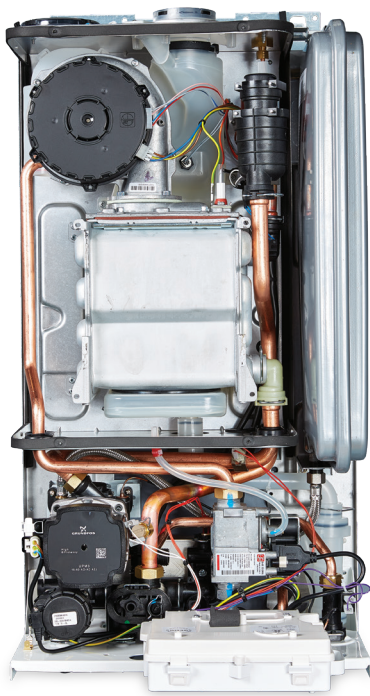
An open vent boiler is the best option if:

- You want to replace an existing open vent boiler and are happy with its performance
- You have more than one bathroom
- Your mains water pressure is low

EASI-HEAT PLUS

HIGH EFFICIENCY BOILERS

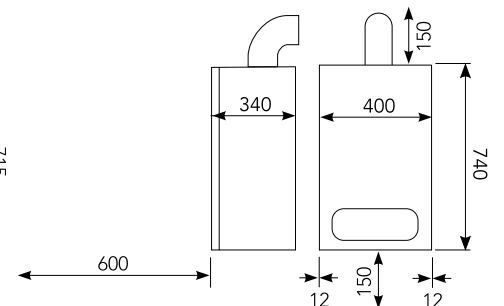
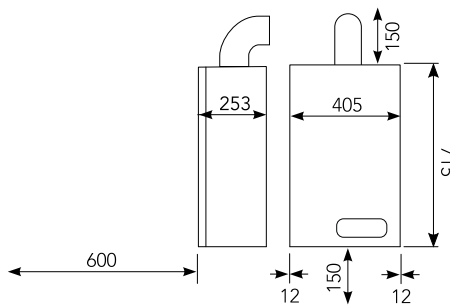
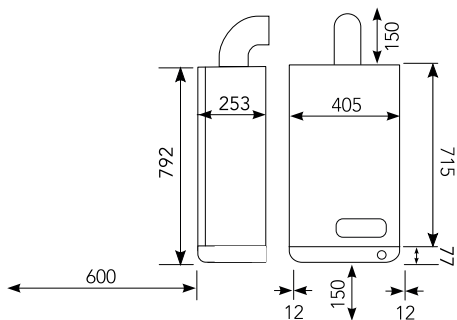
The Vokèra Easi-Heat Plus is an extremely compact and versatile range of boilers that offer flexible installation. Their small dimensions allow for kitchen cupboard fit and the boiler can be easily converted to LPG via an optional kit. For peace of mind, Easi-Heat Plus comes with a 5 year warranty⁽¹⁾ as standard and is Class A efficiency under ErP.



Combi

System

Open vent



Fully compliant with the Energy-related Products directive.

5 year parts and labour warranty.⁽¹⁾

Compact dimensions and low lift weight enable a flexible installation with the boiler able to be sited almost anywhere in the home, including a kitchen cupboard (combi & system only).

Designed for easy installation. Standard Vokèra pipework layout enables trouble-free replacement of older Vokèra models.

Hot water survivor function: If the hot water thermistor fails it will use the primary thermistor to provide hot water at 55°C to ensure the end user has access to a supply of warm water (combi only).

Simple commissioning, only minimal adjustments are required after installation and automatic modulation eliminates the need to range rate the boiler.

Built-in mechanical time clock (combi only).

Anti-cycling control prevents energy wasteful on/off cycling and reduces wear and tear.

Low NOx - Class 5 performance.

Built-in frost protection, protects the appliance from damage during periods of cold weather.

Plated heat exchanger reduces the risk of scaling and comes with 5 year anti-scale warranty (combi only).

Installation time saving features: Built-in condensate trap with safety device and push-fit connection.

Combustion analysis test point for easy servicing and maintenance.

Can be converted to LPG.

Individual heating and hot water controls ensure a simple temperature adjustment operation for the end user.

SPECIFICATIONS	25C COMBI	29C COMBI	32C COMBI	24S SYSTEM	30S SYSTEM	18V OPEN VENT
PRODUCT ORDER CODE (NATURAL GAS)	20116906	20116910	20153964	20136547	20136551	20144036
PRODUCT ORDER CODE (LPG)	20120894	20120896	20156700	N/A	N/A	N/A
CENTRAL HEATING						
HEAT INPUT (KW)	20	25	25	25	29	20
MAXIMUM HEAT OUTPUT 80/60°C (KW)	19.5	24.5	24.5	24.2	28.1	19.7
MAXIMUM HEAT OUTPUT 50/30°C (KW)	20.8	26.2	26.2	25.9	30.0	21.2
DOMESTIC HOT WATER						
MAXIMUM INPUT (KW)	25	29	31.6	N/A		
FLOW RATE - 35°C RISE (L/MIN)	10.2	11.9	12.9	N/A		
DIMENSIONS						
HEIGHT (MM) ⁽¹⁾	792		715		740	
WIDTH (MM)	405		405		400	
DEPTH (MM)	253		253		340	
WEIGHT						
DRY WEIGHT (KG)	27	28	28	26	27	25
CONNECTIONS						
FLOW & RETURN	22MM					
GAS	15MM					
DHW INLET & OUTLET	15MM		N/A			
SAFETY VALVE	15MM					
CONDENSATE	21MM					
FLUE DETAILS (CONCENTRIC)						
MAXIMUM HORIZONTAL FLUE LENGTH (60/100MM)	5.85M	4.85M	4.85M	5.85M	4.85M	7.8M
ELECTRICAL						
VOLTAGE (V/Hz)	230/50					
EFFICIENCY						
ErP SEASONAL SPACE HEATING ENERGY EFFICIENCY (CLASS/%)	A/93	A/93	A/93	A/93	A/93	A/92
ErP WATER HEATING EFFICIENCY (XL PROFILE) (CLASS/%)	A/85	A/84	A/86	N/A		
SAP 2009 EFFICIENCY (%)	89.1	89.0	89.0	89.0	89.1	88.8
NOX CLASS	5					

⁽¹⁾The overall height for the combi models includes the clock tray.



ErP Compliant



5 Year Warranty⁽¹⁾



Lightweight and Compact



Converts to LPG

⁽¹⁾Subject to registration and annual service.

GET IN TOUCH

Vokèra Limited, Borderlake House, Unit 7 Riverside Industrial Estate, London Colney, AL2 1HG

E: enquiries@vokera.co.uk

T: 0844 391 0999

W: www.vokera.co.uk

F: 0844 391 0998

WE ARE SOCIAL

