

Easi-Heat Plus

combi

system

open vent



RANGE 25Ci, 29Ci, 32Ci, 24S, 30S & 18V ■

ErP CLASS A ■

5 YEAR WARRANTY ■

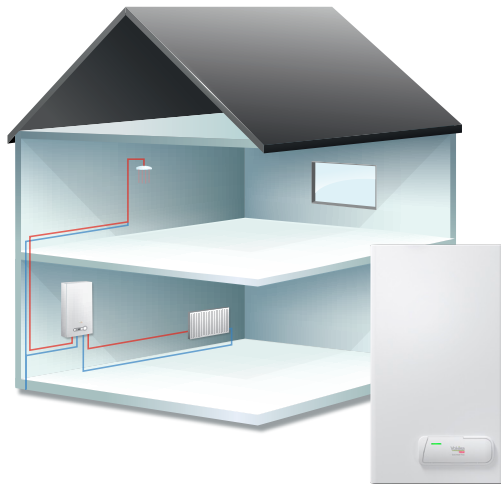
DIGITAL TIME CLOCK ON COMBI VERSION ■

LIGHTWEIGHT WITH COMPACT DIMENSIONS ■

DEDICATED LPG COMBI MODELS ■

EASI-HEAT PLUS

HIGH EFFICIENCY BOILERS

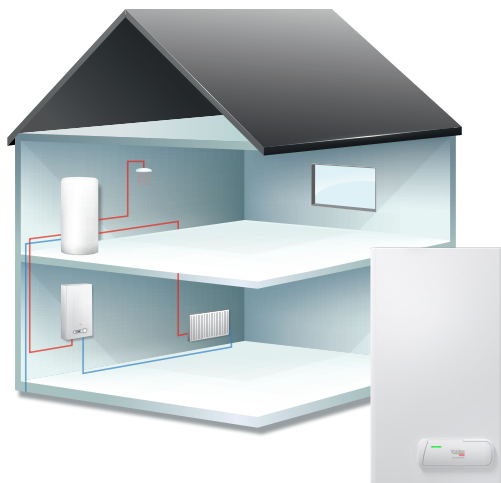


Combi boilers

A combi (combination) boiler provides heat for central heating and domestic hot water on demand.

A combi boiler is the best option if you want to:

- Replace an existing combi boiler and are happy with the performance it provides
- Use the loft space or airing cupboard for another purpose and want to remove the tanks and hot water storage cylinder
- Have instant hot water on demand
- Save space

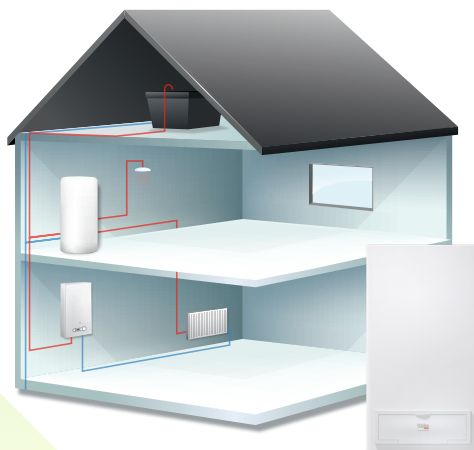


System boilers

A system boiler is installed as part of a sealed central heating system. It's not open to atmospheric pressure because the system is kept within a closed circuit.

A system boiler is the best option if you want to:

- Replace an existing system boiler and are happy with the performance your system boiler provides
- Provide hot water to be used by more than one bathroom at once using an unvented cylinder
- Reduce system pipework
- Remove feed and expansion tanks for your current boiler that are in your loft space



Open vent boilers

Open vent means that the heating system is open to atmospheric pressure, with feed and expansion tanks in your loft space.

An open vent boiler is the best option if:

- You want to replace an existing open vent boiler and are happy with its performance
- You have more than one bathroom
- Your mains water pressure is low

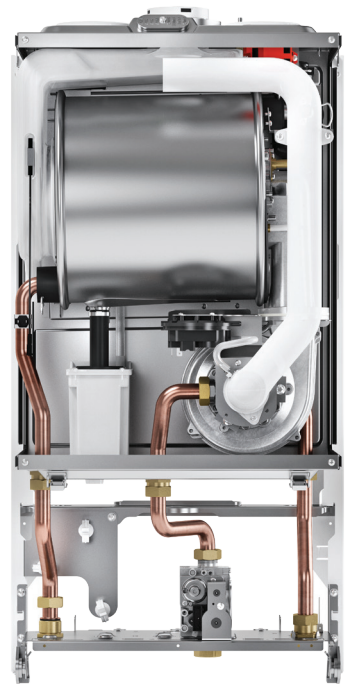
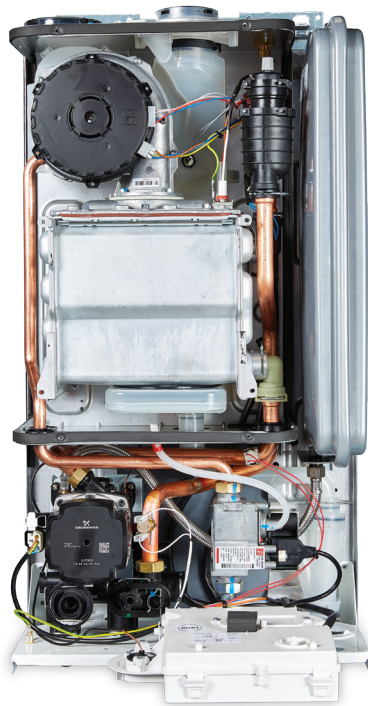
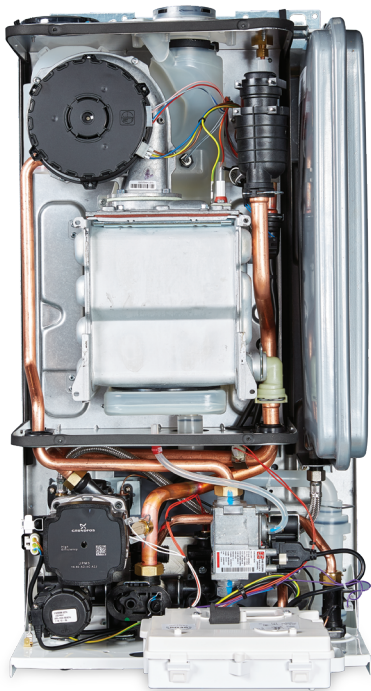
EASI-HEAT PLUS

HIGH EFFICIENCY BOILERS

The Vokèra Easi-Heat Plus is an extremely compact and versatile range of boilers that offer flexible installation. Their small dimensions allow for kitchen cupboard fit and an **LPG version** is available for the combi and a conversion kit for the system and open vent models. For peace of mind, Easi-Heat Plus comes with a 5 year warranty⁽¹⁾ as standard and is Class A efficiency under ErP.



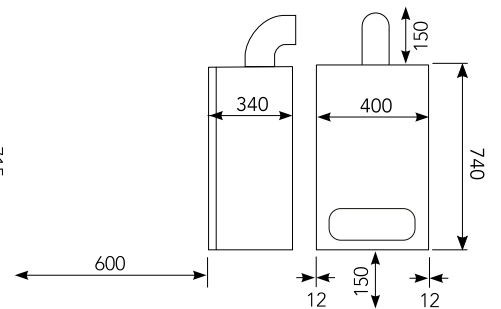
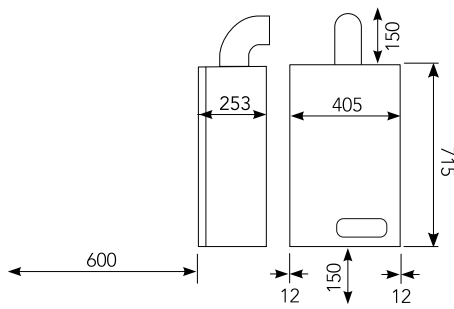
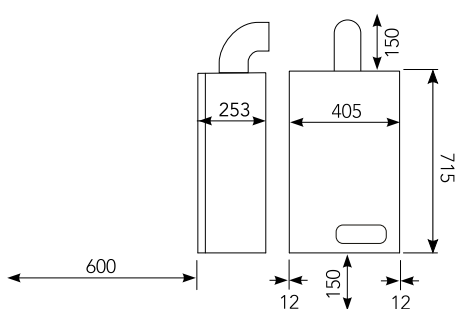
The Vokèra Easi-Heat Plus Ci (combi) features a built-in 7-day digital time clock as standard. The display also will show information about the boiler operating condition including any error codes.



Combi

System

Open vent



Fully compliant with the Energy-related Products directive.

5 year parts and labour warranty.⁽¹⁾

Compact dimensions and low lift weight enable a flexible installation with the boiler able to be sited almost anywhere in the home, including a kitchen cupboard (combi & system only).

Designed for easy installation. Standard Vokèra pipework layout enables trouble-free replacement of older Vokèra models.

Hot water survivor function: If the hot water thermistor fails it will use the primary thermistor to provide hot water at 55°C to ensure the end user has access to a supply of warm water (combi only).

Simple commissioning, only minimal adjustments are required after installation and automatic modulation eliminates the need to range rate the boiler.

Built-in digital time clock (combi only) with error code display.

Anti-cycling control prevents energy wasteful on/off cycling and reduces wear and tear.

Low NOx - Class 5 performance.

Built-in frost protection, protects the appliance from damage during periods of cold weather.

Plated heat exchanger reduces the risk of scaling and comes with 5 year anti-scale warranty (combi only).

Combustion analysis test point for easy servicing and maintenance.

LPG version for combi models. LPG conversion kit for system and open vent models.

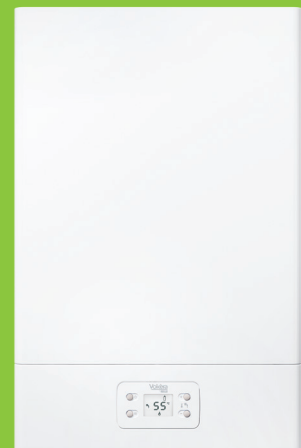
Individual heating and hot water controls ensure a simple temperature adjustment operation for the end user.

SPECIFICATIONS	25Ci COMBI	29Ci COMBI	32Ci COMBI	24S SYSTEM	30S SYSTEM	18V OPEN VENT
PRODUCT ORDER CODE (NATURAL GAS)	20158332	20158334	20158336	20136547	20136551	20144036
PRODUCT ORDER CODE (LPG)	20158333	20158335	20158337	N/A	N/A	N/A
CENTRAL HEATING						
HEAT INPUT (kW)	20	25	25	25	29	20
MAXIMUM HEAT OUTPUT 80/60°C (kW)	19.5	24.5	24.5	24.2	28.1	19.7
MAXIMUM HEAT OUTPUT 50/30°C (kW)	20.8	26.2	26.2	25.9	30.0	21.2
DOMESTIC HOT WATER						
MAXIMUM INPUT (kW)	25	29	31.6		N/A	
FLOW RATE - 35°C RISE (L/MIN)	10.2	11.9	12.9		N/A	
DIMENSIONS						
HEIGHT (MM)			715			740
WIDTH (MM)			405			400
DEPTH (MM)			253			340
WEIGHT						
DRY WEIGHT (KG)	27	28	28	26	27	25
CONNECTIONS						
FLOW & RETURN				22MM		
GAS				15MM		
DHW INLET & OUTLET		15MM			N/A	
SAFETY VALVE				15MM		
CONDENSATE				21MM		
FLUE DETAILS (CONCENTRIC)						
MAXIMUM HORIZONTAL FLUE LENGTH (60/100MM)	5.85M	4.85M	4.85M	5.85M	4.85M	7.8M
ELECTRICAL						
VOLTAGE (V/Hz)				230/50		
EFFICIENCY						
ErP SEASONAL SPACE HEATING ENERGY EFFICIENCY (CLASS/%)	A/93	A/93	A/93	A/93	A/93	A/92
ErP WATER HEATING EFFICIENCY (XL PROFILE) (CLASS/%)	A/85	A/84	A/86		N/A	
SAP 2009 EFFICIENCY (%)	89.1	89.0	89.0	89.0	89.1	88.8
NOX CLASS				5		

Also available **Easi-Flo LE** gas fired water heater suitable for natural gas and LPG.

NG - 20143494

LPG - 20143495



ErP Compliant



5 Year Warranty⁽¹⁾



Lightweight and Compact



LPG Version / Kit



BeSMART Compatible

⁽¹⁾Subject to registration and annual service.

GET IN TOUCH

Vokèra Limited, Borderlake House, Unit 7 Riverside Industrial Estate, London Colney, AL2 1HG

E: enquiries@vokera.co.uk

T: 0844 391 0999

W: www.vokera.co.uk

F: 0844 391 0998

WE ARE SOCIAL

