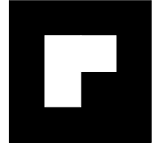
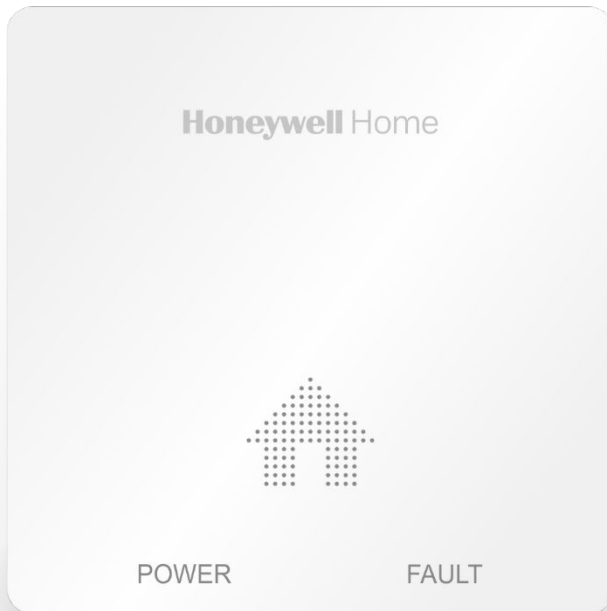
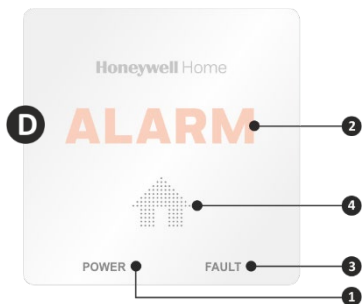
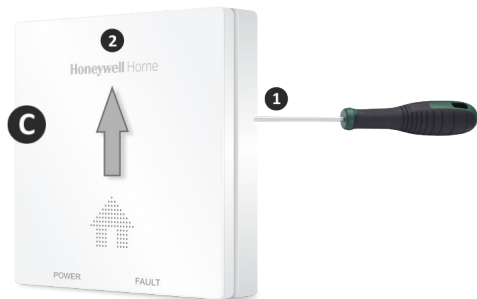
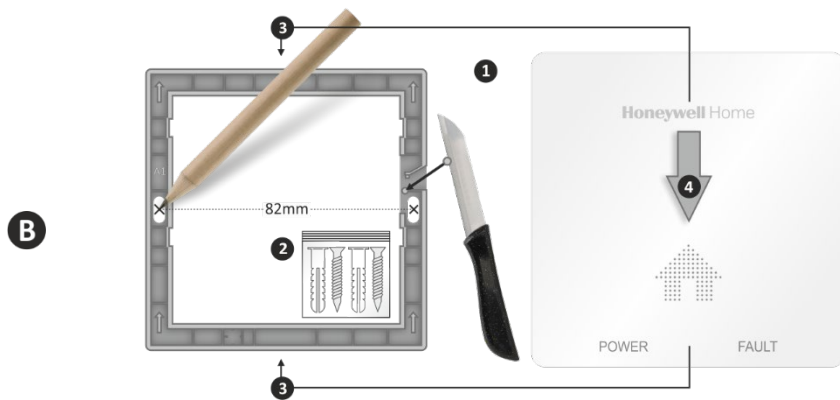
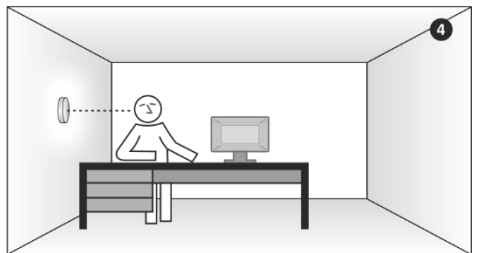
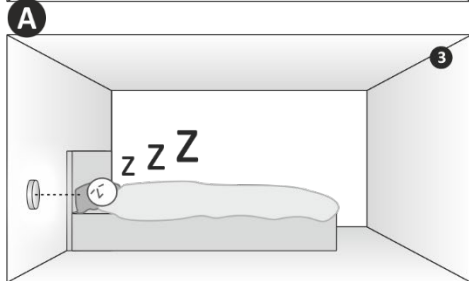
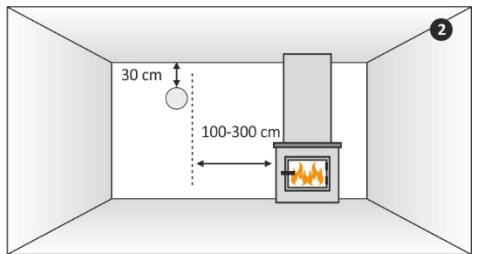
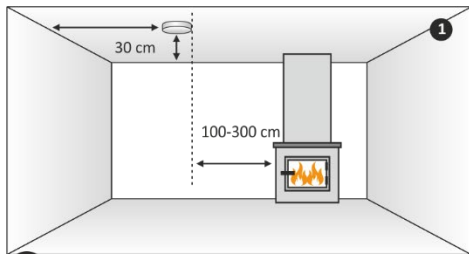


Honeywell Home



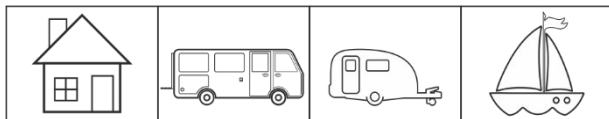
Carbon Monoxide Alarm Installation and Setup Guide





1. Introduction

Thank you for purchasing this Carbon Monoxide (CO) alarm.



The symbols above mean that the alarm is suitable for use in domestic premises (including static caravan holiday homes), caravans, motor caravans and boats.

2. Where to install the device? (see A, page 2)

Ideally, a device should be installed in every room containing a fuel-burning appliance and in a room where the occupant(s) spend most time like the bedroom and sleeping room.

1- Ceiling mounting / 2- Wall mounting / 3- bedroom / 4- Study/hobby room

3. Where not to install the device

In an enclosed space (for example in a cupboard or behind a curtain).

Where it can be obstructed (for example by furniture).

Directly above a sink.

Next to a door or window.

Next to an extractor fan.

Next to an air vent or other similar ventilation openings.

In an area where the temperature may drop below -10 °C or exceed 45 °C.

Where dirt and dust may block the sensor.

In a damp or humid location.

In the immediate vicinity of a cooking appliance.

4. Installation (see B, page 2)

After cutting off the small cylinder (1) on the bracket, the tamper proof locking tab function is activated.

Attach (2) the wall bracket to the wall or ceiling.

Fit the alarm onto the wall bracket (3).

Press firmly against the wall plate and slide (4) the device down.

Tamper proof locking tab will click into place.

5. Activation

Press and hold the cover, this is the TEST / SILENCE button, for 5 seconds.

All indicators will flash, the sounder will beep and the device will enter a warm-up state.

The alarm has been activated.

The green POWER light blinks once per second.

After 60 seconds, the green POWER light blinks once every minute.

The equipment is working normally.

6. Removal (see C, page 2)

Use a small screwdriver to press on the tamper proof locking tab (1) located at the right edge of the device

Slide the device to the up (2) to remove it from the wall mounting plate.

When removing the device from the wall mounting plate, the alarm keeps working.

7. Recommended actions when CO alarm warning has been activated

If your unit is in ALARM, keep calm, and carry out the following actions in the order given:

Open all doors and windows to increase the rate of ventilation.

Stop using all fuel-burning appliances and turn them off where possible.

If the alarm continues, then evacuate the premises. Leave the doors and windows open, and only re-enter the building when the alarm has stopped.

Get medical help for anyone suffering the effects of Carbon Monoxide poisoning, such as headache or nausea, and advise that Carbon Monoxide inhalation is suspected.

Telephone the gas or other fuel supplier on their emergency number, so that the source of carbon monoxide emissions can be identified and corrected.

Do not use the fuel-burning appliances again until they have been checked and cleared for use by a competent person according to national regulations.

Note: There may be another source of carbon monoxide emission apart from fuel-burning appliances, for example a large amount of tobacco smoke, town gas or emission from a smouldering fire. Do not use any combustion appliances until they have been checked by a qualified person.

See D – Page 2 ➡	1. POWER	2. ALARM	3. FAULT	4. BEEP	
LED ➡	Green	Red	Yellow	Sounder	
Normal operation	1 x every minute	off	off	off	Normal operation. No CO detection.
CO alarm warning	off	4 x every minute	off	Continuously	CO alarm warning.
Alarm silence	off	4 x every minute	off	Muted	CO alarm warning MUTED ALARM SOUND
Alarm memory	off	1 x every minute	off	1 x every minute	Dangerous CO condition detection whilst user was absent. Currently, no dangerous CO level present.
Fault	off	off	2 x every minute	2 x every minute	Fault warning.
End of life	off	off	3 x every minute	3 x every minute	Replace device ASAP.
Low battery	off	off	1 x every minute	1 x every minute	Replace device.
Low battery silence	off	Off	1 x every minute	Muted	Mute 9 hours active
HOW TO MUTE ALARM SOUND					
CO alarm warning	ONLY AFTER RECOMMENDED ACTIONS HAVE BEEN TAKEN. The alarm is due to dangerous levels of carbon monoxide				Press cover test/silence button
Low battery					Press cover test/silence button

GAS EMERGENCY SERVICE TELEPHONE NUMBER 0800 111 999

Contact numbers for other fuel appliances:

Oil users: Contact OFTEC on 0845 658 5080

Solid fuel users: Contact HETAS on 0800 600 000

8. When will the Alarm be activated

If the CO level (PPM) in the room is too high, the carbon monoxide detector switches to the alarm mode according to the scheme below:

- 30 - 049 PPM: Alarm signal after 120 minutes
- 50 - 099 PPM: Alarm signal after 60 - 90 minutes
- 100 - 299 PPM: Alarm signal after 10 - 40 minutes
- >300 PPM: Alarm signal within 3 minutes

9. Health effects of carbon monoxide

- ~100 PPM: Slight headache, flushing of skin (indefinite exposure).
- 200 - 300 PPM: Headache (5 – 6 hour exposure)
- 400 - 600 PPM: Severe headache, weakness, dizziness, nausea, vomiting (4 – 5 hour exposure)
- 1100- 1500 PPM: Increased pulse and breathing rate, syncope (fainting), coma, intermittent seizures (4 – 5 hour exposure)
- 5000- 10000 PPM: Weak pulse, depressed respiration / respiratory failure, death (1 – 2 minutes exposure)

10. Maintenance

The CO alarm does not require any maintenance other than to clean the outside case occasionally with a clean tissue. Ensure that the holes on the front of the unit are not blocked with dust or dirt. We recommend to manually test the detector once a month by pressing and holding the test button. If problems are found, the detector switches to the error mode (either siren error or sensor error). We recommend to manually test the detector at least once a year by pressing and holding the test button. Dust is a major cause of false alarms. Therefore, clean the carbon monoxide detector once a month. Use a vacuum cleaner to gently remove any accumulated dust along the sides of the carbon monoxide detector. Never use a wet cloth or detergent to clean your alarm, as this can be harmful to the sensor.

11. Warnings

This manual contains important safety information about the installation and operation of the alarm. Read the manual carefully and keep it in a safe place for future reference.

The apparatus should be installed by a competent person.

Installation of a CO alarm should not be used as a substitute for proper installation, use and maintenance of fuel burning appliances including appropriate ventilation and exhaust systems.

This product is not water resistant and is only suitable for indoor use.

Do not try to repair the device, it has the risk of electric shock or malfunction if the device is tampered with.

Do not expose the product and batteries to extreme temperatures.

Some common household substances can affect the sensitivity of the CO alarm. Do not use household cleaners, polishes, perfumes or aerosol sprays on or close to the alarm. Avoid the use of nail polish remover, model paint or model glue close to the alarm.

This CO alarm is designed to protect individuals from the acute effects of carbon monoxide exposure. It will not fully safeguard individuals with specific medical conditions. If in doubt consult a medical practitioner.

Long exposure to low levels (>10 ppm) of CO may cause chronic effects. If in doubt consult a medical practitioner.

12. Specifications

Gas detected	: Carbon Monoxide
Lifetime	: 10 years
Power supply	: Long life lithium battery, 3 V, sealed for the life of the product (no replacement necessary)
Installation	: Wall mount, ceiling
Dimensions	: 95 mm x 95 mm x 25 mm
Weight	: 120 g
Audible	: ≥85 dB@3m
Detection range	: Max. 40 m ² within a room.
Sensor technology	: Electrochemical Cell
Type of device	: Type-B
Operation Ambient Condition	: Temperature -10°C to +45°C
	: Humidity 25 - 95% RH (non-condensing)
Storage/Transport Ambient Condition	: Temperature -15°C to +50°C
	: Humidity 20 - 95% RH (non-condensing)
IP rating	: IP44

13. Service and contact

For questions about the installation, use or operation of this product please visit www.resideo.com

Please Note: While every effort has been made to ensure accuracy in this publication, no responsibility can be accepted for errors or omissions. Data may change, as well as legislation, and you are strongly advised to obtain copies of the most recently issued regulations, standards, and guidelines. This publication is not intended to form the basis of a contract.

14. Symbols



When the unit has come to the end of its life, dispose of it in accordance with local regulations. It is classified as electronic waste and contains a battery and therefore should be disposed of separately from household waste.



The CO Alarm is certified by BSI to the European standard EN 50291-1 "Electrical apparatus for the detection of carbon monoxide in domestic premises" and EN 50291-2 "Electrical apparatus for continuous operation in a fixed installation in recreational vehicles and similar premises including recreational craft". It conforms to the Low Voltage Directive (LVD) and the Restriction of Hazardous Substances Directive (RoHS).

15. Disclaimer

This Carbon Monoxide alarm is designed to alert you to a potentially dangerous build-up of Carbon Monoxide gas. It is not designed to remedy a Carbon Monoxide problem nor to locate a specific source of Carbon Monoxide. Resideo shall not be liable to pay for any Carbon Monoxide investigation or service call carried out or arranged in response to an alarm.

16. Warranty

Resideo warrants your new CO alarm for ten years (R100C-1 model) from the date of purchase by the end user or until the expiry date on the side of the unit, whichever occurs first, according to the specifications as set out in this instruction manual.

We will, at our discretion, repair or replace, with same or similar product, any part of the CO alarm which is found to be defective in either materials or workmanship within the warranty period.

We shall be under no obligation to repair or replace units which are found to be defective in any way due to unreasonable use or neglect, improper storage, used or maintained not in accordance with the user manual or if the product has been tampered with or found to have been dismantled.

This warranty is instead of and excludes all warranties implied by law, and to the extent permitted by law, our liability under the warranty is capped at the price of the product.

In no event are we liable for (a) any direct, indirect, incidental, consequential loss; (b) any loss arising from business interruption; (c) loss of profits; (d) loss of revenue; (e) loss of use of any property or capital; (f) loss of anticipated savings or loss of



resideo

www.resideo.com

Resideo Technologies, Inc
Ademco 1 Ltd., 200 Berkshire Place
Winnersh Triangle, Berkshire,
RG415RD – UNITED KINGDOM

© 2021 Resideo Technologies, Inc. All rights reserved.

The Honeywell Home trademark is used under license from Honeywell International, Inc.

This product is manufactured by Resideo Technologies, Inc. and its affiliate

