

EASI-PLAN®

Single Sliding Fitting Plate 1/2"

ref: EPFP-05-0505

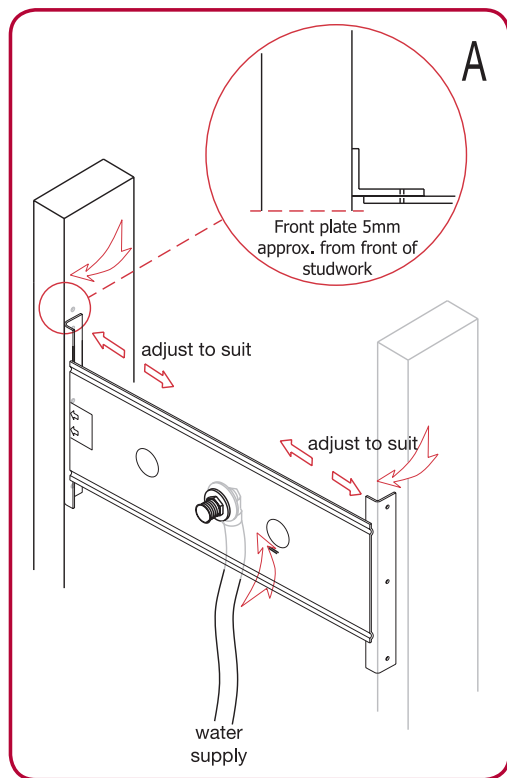
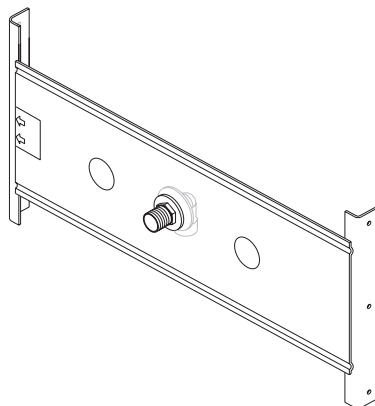
For Installation of:

- Fixed Shower Heads
- Shower Outlets
- Body Jets

Note: 340 - 400mm Adjustment

Checklist of Parts

- 1x Adjustable Fitting Plate
- 1x Pre Fitted Brass Elbow & Washer
- 1x Plastic Debris Stopper



Step 1

Firstly adjust the frame width to suit your timber or metal studwork, then simply secure the frame to the studwork via the three holes provided on either side.

Note: Please ensure the front plate of the frame is installed in accordance with the detail shown in Fig A

Step 2

Connect your water pipe to the 1/2" female connectors at the rear of the plate.

Step 3

Following tiling, remove the plastic debris stoppers and fit your appliance as required.

If you require any assistance or advice, please contact the Helpline on 0845 8 50 50 40

Abacus House,
Jubilee Court, Copgrove, Harrogate, HG3 3TB, UK
t: 0845 8 50 50 40 f: 0845 8 50 50 30
e-mail: info@abacusdirect.co.uk

www.abacusdirect.co.uk

 **abacusdirect**
MANUFACTURING INNOVATION