


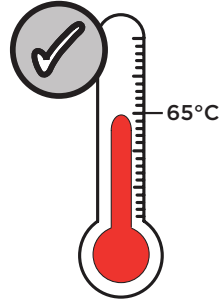
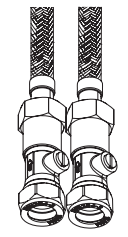
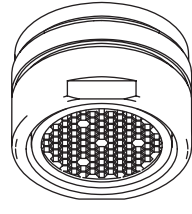
# BRISTAN

## Installation Instructions & User Guide

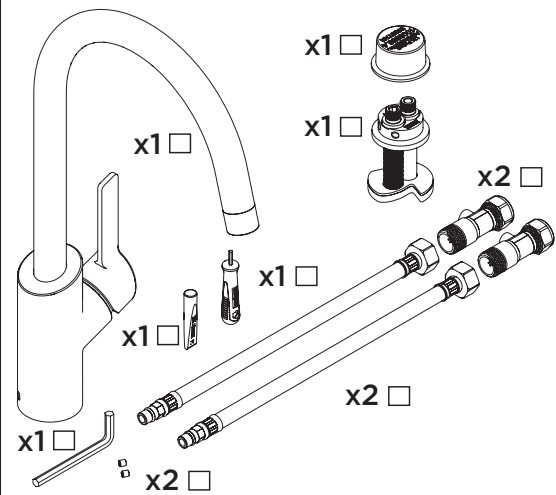
Please leave these instructions with the end user

MPL EFSNK GM (D2)

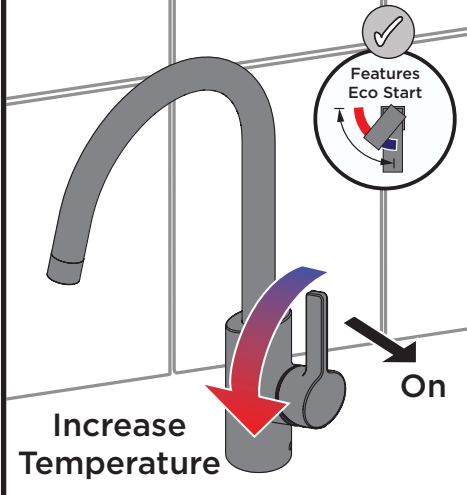
### Specifications

<b>Dynamic Water Pressure</b> Min: 0.3 bar    Max: 5.0 bar  Maximum Static Pressure: 10.0 bar	<b>Inlet Water Temperature</b>  Maximum Hot 65°C	<b>Inlet Connections</b> 1/2" BSP Flexible Tails with Isolation Valves  (non-return valves included)	<b>Outlet</b>  M22 Female Aerator
-----------------------------------------------------------------------------------------------------------------------------------------------------------------------------------------	-----------------------------------------------------------------------------------------------------------------------------------------	----------------------------------------------------------------------------------------------------------------------------------------------------------------------------------------------------	----------------------------------------------------------------------------------------------------------------------------

### Pack Contents



### Operation



### Temperature Control

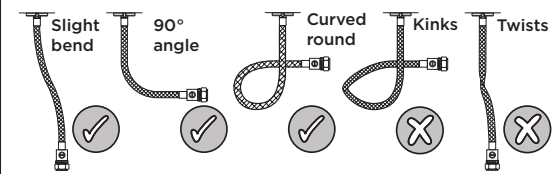
For cold water, push the handle down so it is parallel with the spout (the handle will stop here when pushing it away from you)

To increase temperature, turn the handle towards you.

The temperature will gradually rise the further the rotation of the handle.

The handle will cease to turn once it is at a 90° angle, supplying the maximum temperature.

### Flexible Connecting Pipes



### Tools Required for Installation/ Maintenance



### Prior to Installation

All products manufactured and supplied by Bristan are safe to use provided that they are installed, operated and receive regular maintenance in accordance with these instructions.

This product needs to be installed in accordance with, and meet the requirements of The Water Supply (Water Fittings) Regulations (Northern Ireland) 2009 and The Water Supply (Water Fittings) (Scotland) Byelaws 2014. For full Installation Requirements & Notes (IRN) please visit [www.wrasapprovals.co.uk/approvals-directory](http://www.wrasapprovals.co.uk/approvals-directory)

Isolation valves must be fitted to the inlet water supplies to ensure ease of future maintenance.

Before installing this product the water supply must be thoroughly flushed in order to remove any swarf, solder etc. Full access must be made available for future maintenance/servicing purposes.

This product must not be modified in any way as this will invalidate the guarantee.

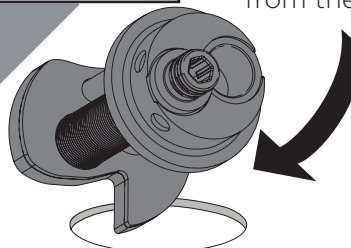
### Spare Parts



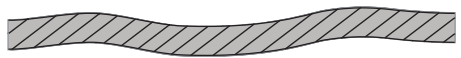
To replace any spare parts for your tap, why not scan the QR Code or visit [www.bristan.com](http://www.bristan.com) and search for your product.

### Installation

**1** Remove the protective cap from the base assembly.

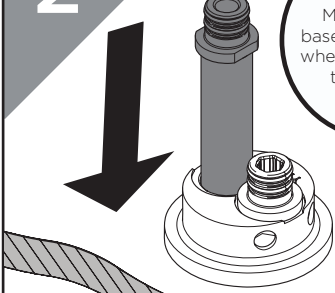


Feed the base through the sink hole from the top.

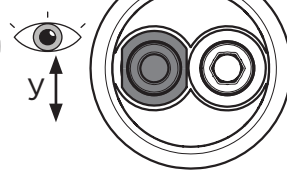


If the surface the tap is being fitted to is over 8mm; or you feel the tap needs extra stability, follow the **alternative installation steps** overleaf.

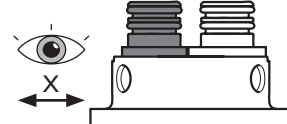
**2** Drop the Plain Inlet Connector into the base.



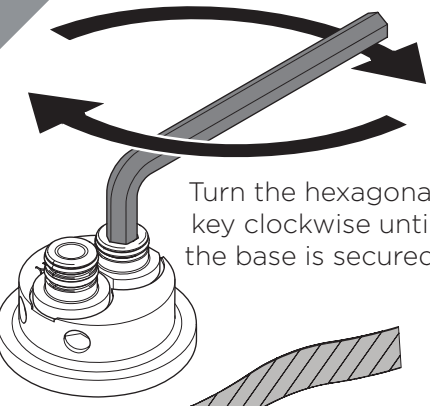
**REMEMBER** Make sure the base is centralised when viewed from the front of the tap



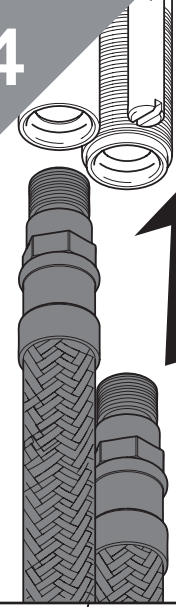
Ensure flat area of the plain inlet connector sitting flush adjacent to threaded inlet connector



**3** Turn the hexagonal key clockwise until the base is secured.




**4** Screw the flexible tails into the base.

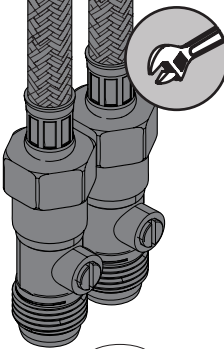


**REMEMBER** hot on the left, cold on the right

**DO NOT OVER-TIGHTEN**

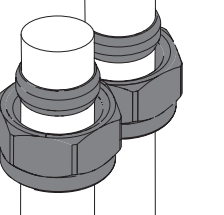


**5** Connect the hot and cold water connections.

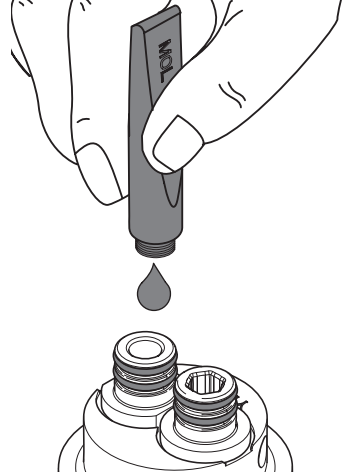


Connect the hot and cold water connections.

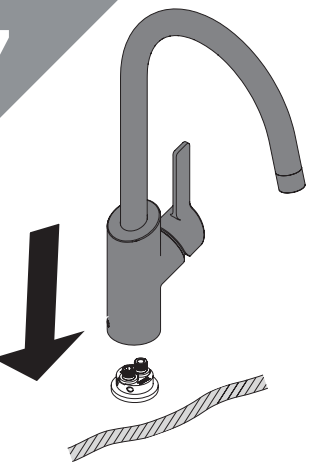
Olive Compression Nut



**6** Grease the O-Rings using the Molykote Grease provided.

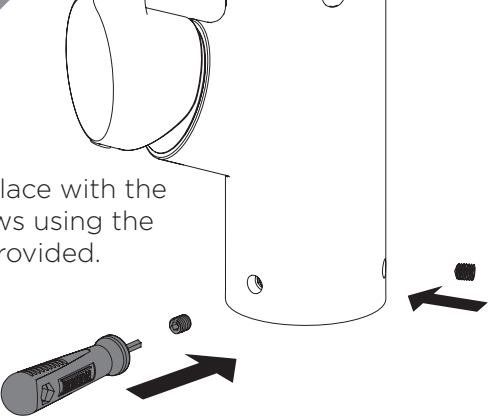


**7** Place your desired tap onto the base.

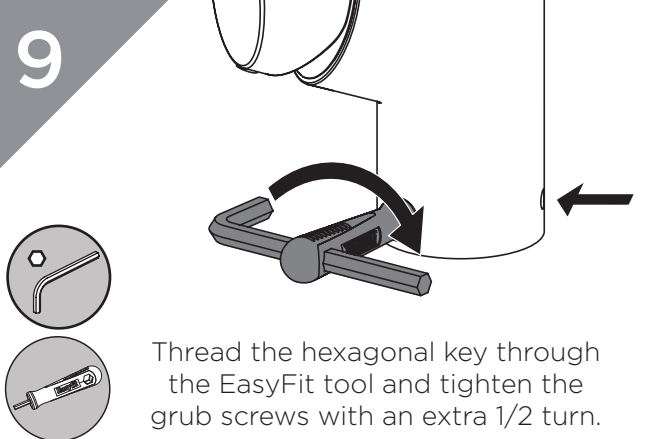


**IMPORTANT** Ensure the tap is correctly positioned and fully located on the base

**8** Secure in place with the grub screws using the tool provided.



**9** Thread the hexagonal key through the EasyFit tool and tighten the grub screws with an extra 1/2 turn.



## General Cleaning

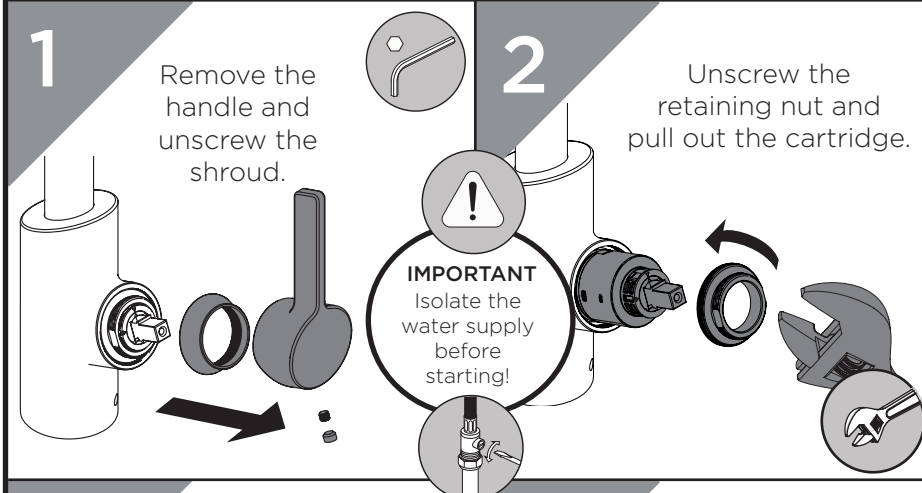
Bristan products are made from premium materials, with hand polished, PVD, EPD or electroplated finishes.

Your tap should be regularly cleaned with warm water, a mild pH-neutral liquid soap, and polished with a soft cloth. Any residues from soap, toothpaste, shampoos and shower gels can cause blemishes if not rinsed off straight after use.

Household bleaches and cleaners contain harsh chemicals and may damage the surface finish. Avoid using abrasive cloths, scouring pads, scrub sponges, steel wool or anything similar.

Some surfaces such as nickel and pewter may be affected by the dye found in some cloths, so it is also important to avoid hanging cloths on spouts.

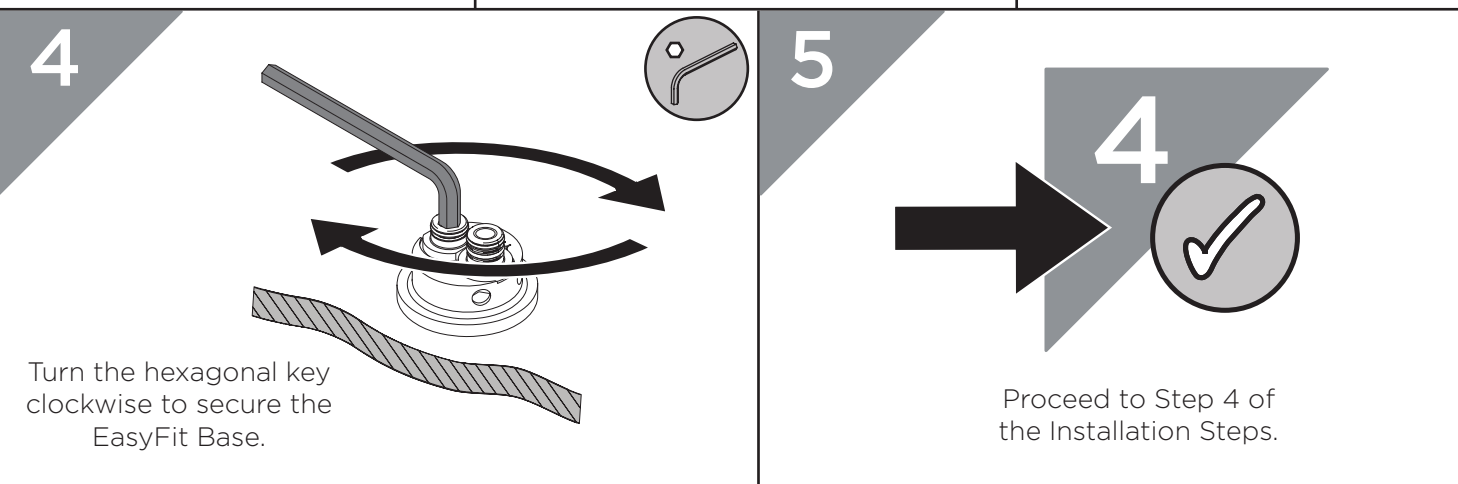
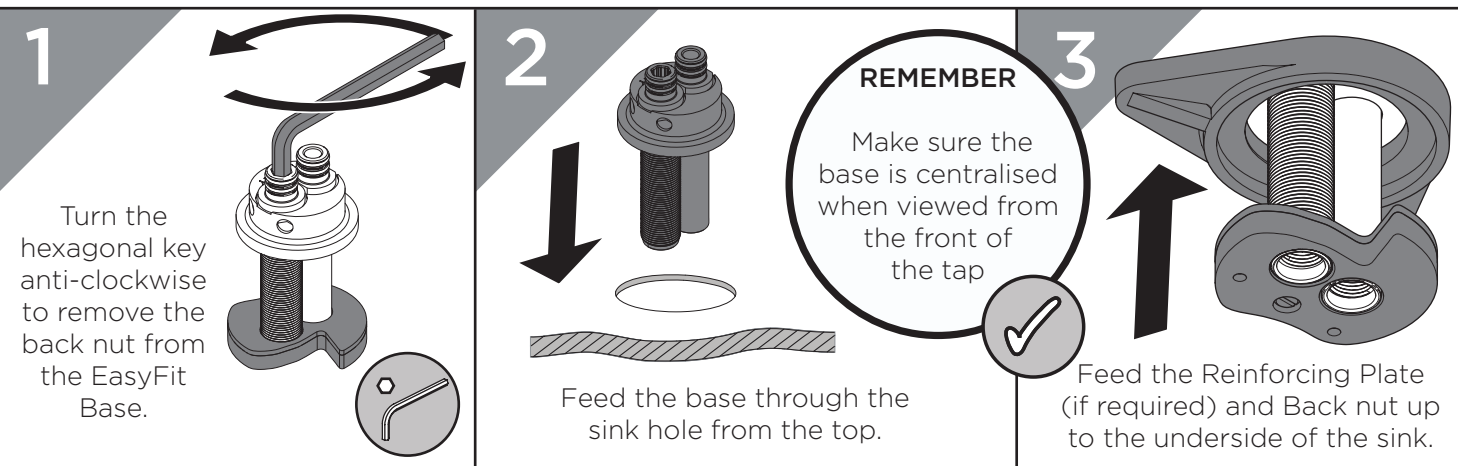
## Maintenance - Replacing Cartridge



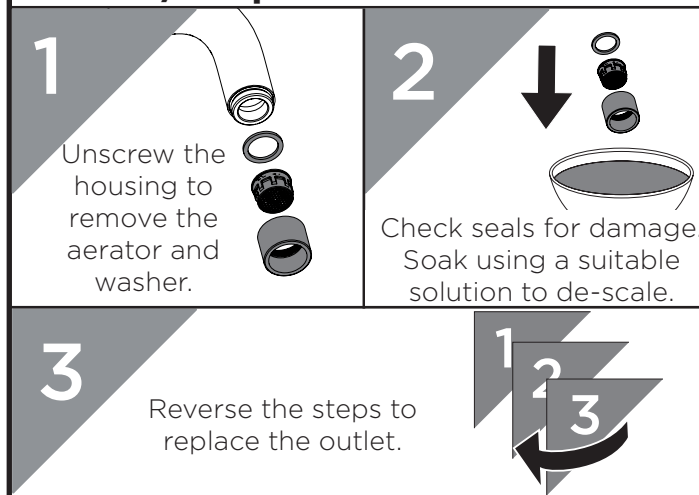
## Troubleshooting

Symptom	Cause(s)	Remedy
<b>No flow or low flow rate</b>	Partially closed isolation valve.	Open isolation valve.
	Head of water is below the minimum distance required.	Refer to your the Specification for the minimum working pressure/distance required.
	Hot or cold water being drawn off elsewhere causing pressure changes or instantaneous boiler temperature changes.	Do not use other water outlets when using the taps.
	Airlock or partial blockage in the supply pipework or hoses.	Flush through pipework to ensure removal of debris and any airlocks.
	Water supply failure	Investigate water supply. Check your plumbing and heating systems for any faults.
<b>Water dripping from taps</b>	This is normal for a short time after using the taps.	This is caused by residual water tension, the build up of water in the tap body.
	If water continues to drip, possibly due to the ceramic disc valves/cartridge	Refer to the Maintenance section to replace the valves/cartridge.
<b>Taps do not turn on</b>	Closed isolation valve.	Open isolation valve.
	Mains water supply turned off.	Turn on mains water supply.
<b>Wobbly Tap</b>	Grub screws are not tight enough at the base	Ensure the grub screws are fully tightened against the base
	Extra security may be required depending on the surface the tap is fitted on to.	Refer to the Alternative Installation steps in order to fit the Reinforcing Plate.

## Alternative Installation for Surfaces Out of Tolerance/Extra Stability



## Maintenance - Clean/Replace Outlet



## Contact Us

**BRISTAN**

Bristan Group Ltd.

**UK:** Bristan Group, B78 1SG.  
**EU:** Masco Europe S.à.r.l.  
14 Rue Strachen  
6933 Mensdorf  
Luxembourg

**Customer Service:** +44330 026 6273

**Web:** [www.bristan.com](http://www.bristan.com)

**Email:** [enquire@bristan.com](mailto:enquire@bristan.com)

**A Masco Company**

## Our Guarantee

At Bristan, we want to make things as easy as possible for our customers. That's why we offer solid guarantees on all our products, effective from the date of purchase, to give you peace of mind.

To start your free guarantee simply scan the QR code and register your product. Alternatively visit [www.bristan.com/register](http://www.bristan.com/register).

For any other queries, please call our Customer Service on 0330 026 6273 where our expert team of advisors will be able to offer you any help and advice.

For full guarantee terms and conditions visit [www.bristan.com/service-centre/guarantees](http://www.bristan.com/service-centre/guarantees).

