



Product features:

- Metal construction throughout
- Luscious European quality chromium plate finish
- Single lever control for effortless single handed control
- Supplied complete with flexible tail pipes for fast simple fitting
- Unique and coordinated diamond quilted handle design

Packaged properties:

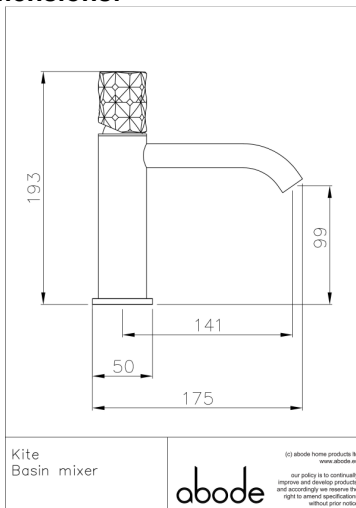
Box length (mm): 0 Box depth(mm): 0
Box width(mm): 0 Boxed weight (Kg): 0.00

Includes pop up waste?: No

Additional comments:

Includes Cache TT aerator key

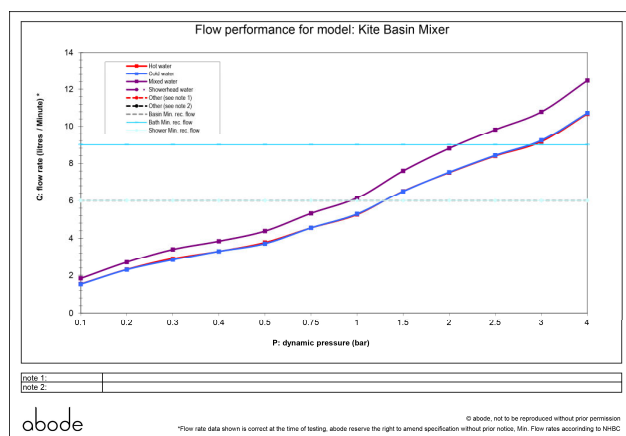
Product dimensions:



- Product mounted where: Surface
- Recommended hole size: 35 mm
- Overall Height / projection: 193 mm
- Exit reach: 141 mm
- Exit height: 99 mm
- Base size: 50 mm
- Inlet centre distance(s): n/a mm

- Min. fitting depth required: 50 mm
- Max. surface depth: n/a

Product flow characteristics:



- Min / Max water pressure (bar): 1.00* / 5
- Part G max. mixed flow rate at 3 bar (l/m): 10.78
- Inlet connection type / length: Flexible / 420 mm
- Inlet (plumbing connection) / outlet size: 1/2" F / M8
- Product flow characteristics: Single flow
Non return valve(s) supplied or position: None
- Aerator type: Cache TT, Light Blue
- Control valve type: Single lever (25mm)
- Includes output diverter?: No
- Inlet meshed particle filters included: n/a
- Shower hose type / length: N/a / n/a

Warranty Summary (full details available on request):

- Materials and workmanship defects warranted for 5 years
- Valves and working parts warranted for 5 years
- Surface warranty defects warranted for 1 year
- O-rings, hoses & gaskets warranted for 1 year

Care instructions:

- Clean the mixers and showers regularly as required, using soap, do not use any other cleaners.
- Regular cleaning will prevent the build-up of lime scale and dirt
- After cleaning rinse thoroughly with clean water to remove any cleaner residue
- Residues of liquid soaps, shampoos and shower foams can also cause damage, so rinse with clean water after using, avoid contact with any abrasives