



#### Product features:

- Stylish two tone brushed accents
- Part G compliant 5 Litres / minute flow rate
- Modern minimalism with flair
- Supplied complete with flexible tail pipes for fast simple fitting
- Cold start valve

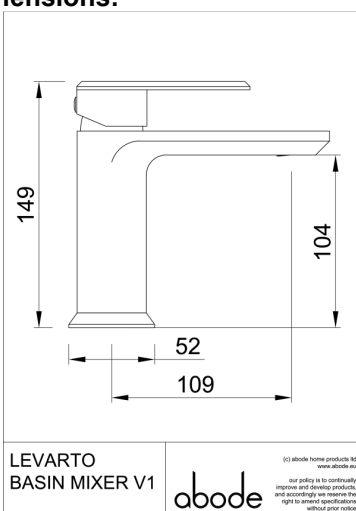
#### Packaged properties:

Box length (mm): 190      Box depth(mm): 80  
Box width(mm): 170      Boxed weight (Kg): 1.11

Includes pop up waste?: No

Additional comments:

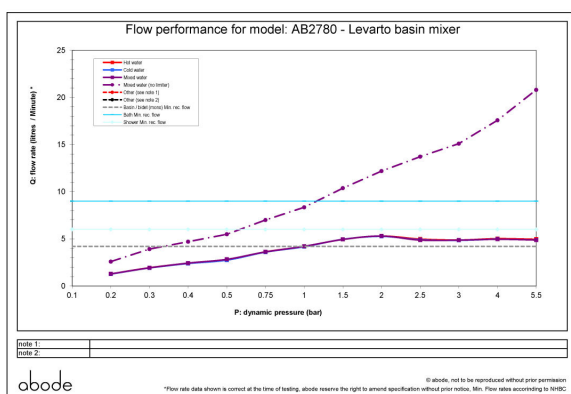
#### Product dimensions:



- Product mounted where: 35 mm
- Recommended hole size:
- Overall Height / projection: 149 mm
- Exit reach: 109 mm
- Exit height: 104 mm
- Base size: 52 mm
- Inlet centre distance(s):

- Min. fitting depth required: 25 mm
- Max. surface depth: 0

#### Product flow characteristics:



- Min / Max water pressure (bar): 0.40\* / 5  
0.4 bar (without limiter)  
1 bar (with limiter)  
flow rate varies depending on aerator install choice (high flow aerator for conversion for low supply pressures), see graph for details

- Part G max. mixed flow rate at 3 bar (l/m): 4.87
- Inlet connection type / length: Flexi / 350 mm
- Inlet (plumbing connection) / outlet size: 1/2" F / M10
- Product flow characteristics: Single flow  
Non return valve(s) supplied or position: no
- Aerator type: 5 L/M, honeycomb, swivel
- Control valve type: Single lever (35mm)
- Includes output diverter?: N/A

#### Warranty Summary (full details available on request):

- Materials and workmanship defects warranted for 5 years
- Valves and working parts warranted for 5 years
- Surface warranty defects warranted for 1 year
- O-rings, hoses & gaskets warranted for 1 year

#### Care instructions:

- Clean the mixers and showers regularly as required, using soap, do not use any other cleaners.
- Regular cleaning will prevent the build-up of lime scale and dirt
- After cleaning rinse thoroughly with clean water to remove any cleaner residue
- Residues of liquid soaps, shampoos and shower foams can also cause damage, so rinse with clean water after using, avoid contact with any abrasives