



Product features:

- Metal construction throughout
- Quarter turn handle action for precise flow control
- Custom designed for lower range pressures
- Supplied complete with flexible tail pipes for fast simple fitting
- Swivel spout for maximum flexibility

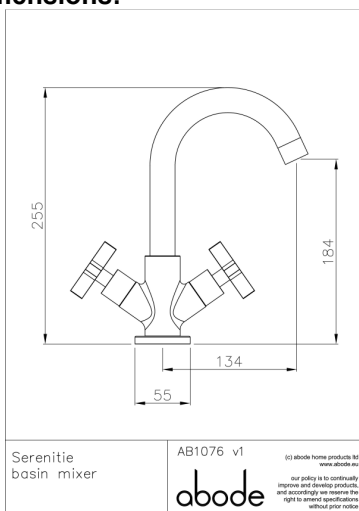
Packaged properties:

Box length (mm): 415 **Box depth(mm):** 95
Box width(mm): 180 **Boxed weight (Kg):** 2.65

Includes pop up waste?: No

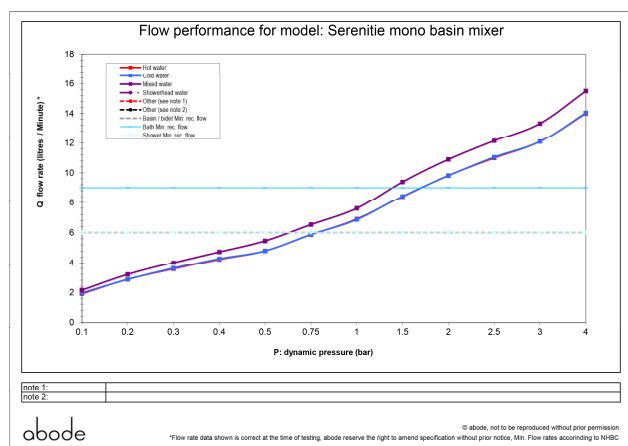
Additional comments:

Product dimensions:



- **Product mounted where:** Surface
- **Recommended hole size:** 32 mm
- **Overall Height / projection:** 255 mm
- **Exit reach:** 134 mm
- **Exit height:** 184 mm
- **Base size:** 55 mm
- **Inlet centre distance(s):** n/a mm
- **Min. fitting depth required:** n/a mm50 mm
- **Max. surface depth:**

Product flow characteristics:



- **Min / Max water pressure (bar):** 0.60* / 5.00
- **Part G max. mixed flow rate at 3 bar (l/m):** 13.33
- **Inlet connection type / length:** Flexible / 360 mm
- **Inlet (plumbing connection) / outlet size:** 1/2" Male / M10
- **Product flow characteristics:** Single Flow
Non return valve(s) supplied or position: No
- **Aerator type:** Laminar Cyan/Grey
- **Control valve type:** 1/2" QT CD (tbc)
- **Includes output diverter?:** N/A
- **Inlet meshed particle filters included:** N/A
- **Shower hose type / length:** N/A / N/A

Warranty Summary (full details available on request):

- Materials and workmanship defects warranted for 5 years
- Valves and working parts warranted for 5 years
- Surface warranty defects warranted for 1 year
- O-rings, hoses & gaskets warranted for 1 year

Care instructions:

- Clean the mixers and showers regularly as required, using soap, do not use any other cleaners.
- Regular cleaning will prevent the build-up of lime scale and dirt
- After cleaning rinse thoroughly with clean water to remove any cleaner residue
- Residues of liquid soaps, shampoos and shower foams can also cause damage, so rinse with clean water after using, avoid contact with any abrasives