

Picture not available

Product features:

- Sylish Brushed Brass finish
- Custom designed for lower range pressures
- Traditional European styling
- Durable compression valve design
- Metal construction throughout

Packaged properties:

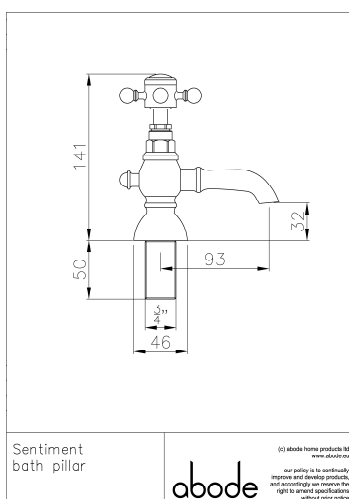
Box length (mm): 265 Box depth(mm): 75
Box width(mm): 210 Boxed weight (Kg): 1.28

Includes pop up waste?: No

Additional comments:

Ceramic indicies

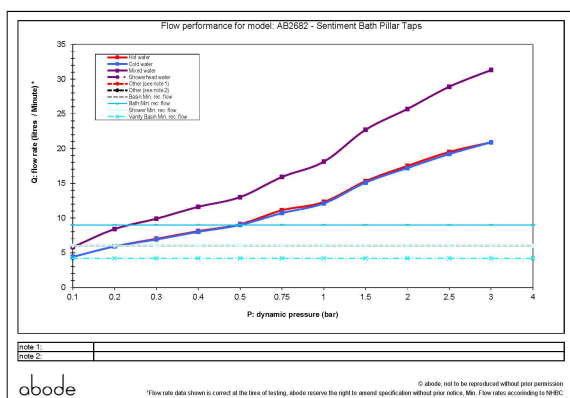
Product dimensions:



- Product mounted where: Surface
- Recommended hole size: 0 mm
- Overall Height / projection: 141 mm
- Exit reach: 93 mm
- Exit height: 32 mm
- Base size: 46 mm
- Inlet centre distance(s): N/A mm

- Min. fitting depth required: 25 mm
- Max. surface depth: 0

Product flow characteristics:



- Min / Max water pressure (bar): 0.10* / 5
- *Detailed minimum pressure requirements for this product: Bath n/a, Shower n/a (bar)
- Part G max. mixed flow rate at 3 bar (l/m): 38.00
- Inlet connection type / length: Fixed / 50 mm
- Inlet (plumbing connection) / outlet size: 3/4" M / n/a
- Product flow characteristics: Single flow
- Non return valve(s) supplied or position: no
- Aerator type: None
- Control valve type: 1/2" compression (7.5 x 20)
- Includes output diverter?: N/A
- Inlet meshed particle filters included: n/a
- Shower hose type / length: N/a / n/a

Warranty Summary (full details available on request):

- Materials and workmanship defects warranted for 5 years
- Valves and working parts warranted for 5 years
- Surface warranty defects warranted for 1 year
- O-rings, hoses & gaskets warranted for 1 year

Care instructions:

- Clean the mixers and showers regularly as required, using soap, do not use any other cleaners.
- Regular cleaning will prevent the build-up of lime scale and dirt
- After cleaning rinse thoroughly with clean water to remove any cleaner residue
- Residues of liquid soaps, shampoos and shower foams can also cause damage, so rinse with clean water after using, avoid contact with any abrasives