

***Extended Key Type Ball Valve***  
***TR15KBV, TR22KBV, TR28KBV,***  
***& TR35KBV***

***Installation and Maintenance Instructions***



**inta**

**Intatec Ltd**

Airfield Industrial Estate  
Hixon  
Staffordshire  
ST18 0PF

In this procedure document we have endeavoured to make the information as accurate as possible.

We cannot accept any responsibility should it be found that in any respect the information is inaccurate or incomplete or becomes so as a result of further developments or otherwise.

Tel: **01889 272 180**

Fax: **01889 272 181**

email: **sales@intatec.co.uk**

web: **www.intatec.co.uk**

## Introduction

Inta supply a wide range of components for heating systems including ball valves.

The Inta extended internal ball valve provides easy connections between system components.

The extended stem allows insulation to be fitted and to be sealed, if required, which will not be broken when operating the valve.

Solid brass construction.

Rotation of stem limited to 90° (open to closed).

Supplied individually to suit the flow or return pipework with both red (hot - flow) and blue (cold - return) dust caps.

An adjustment tool is available (not supplied) to suit the ball valve.

These instructions cover the installation, operation and maintenance. Please read the enclosed instructions before commencing the installation of this product, please note;

**We recommend that the installation of any Inta product is carried out by an approved installer.**

It is recommended that an in line strainer or magnetic filter, like the Intaklean HP, is fitted to protect system components.

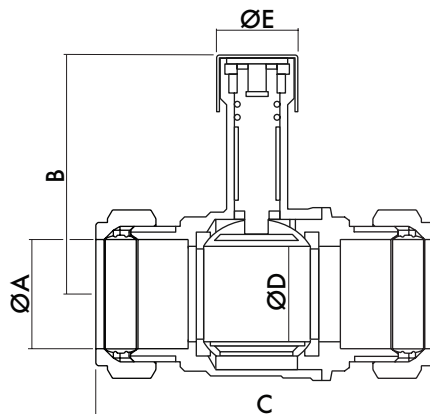
## Products

15mm extended key type ball valve	TR15KBV
22mm extended key type ball valve	TR22KBV
28mm extended key type ball valve	TR28KBV
35mm extended key type ball valve	TR35KBV
Adjustment tool for key type ball valve	TRBVKEY

## Technical Specification

Max. inlet pressure - static:		25 bar
Working temperature range:		-10 to 110 °C
Kv value:	TR15KBV	15m³/h
	TR22KBV	37m³/h
	TR28KBV	66m³/h
	TR35KBV	80m³/h

## Dimensions



Code	ØA	B	C	ØD
TR15KBV	15.2	38±0.5	65	14.5
TR22KBV	22.2	38±0.5	85.6	20
TR28KBV	28.3	43±0.5	90.4	24
TR35KBV	35	43±0.5	105.7	35.1

## Preparation for installation

Flush the water supply pipes thoroughly prior to installation. Do not allow debris, PTFE tape or any metal particles to enter the system.

**Important:** All plumbing is to be installed in accordance with applicable codes and regulations.

**Important:** When fitting/installing a heating system or components it is essential that the correct insulation is used and properly sealed to reduce heat loss from the system, maintaining the system efficiency.

## **Installation**

The TR ball valve is designed to connect easily into copper pipework using the compression joints.

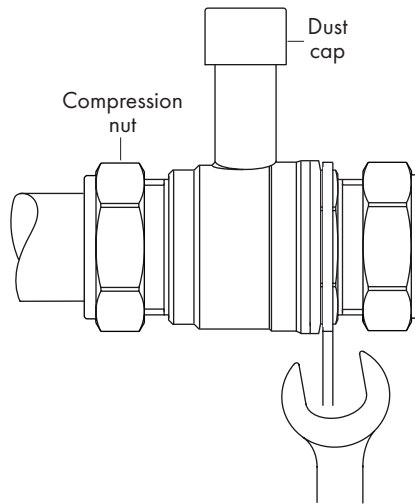
The ball valve is intended for internal use on a variety of services from cold to hot applications.

When specified the valves should be properly insulated and sealed to reduce heat loss and only the dust cap should be exposed to allow the valves to be operated.

Hand tighten the valve onto the pipework and position in the desired orientation.

Use a suitably sized spanner on the hexagonal section as shown to hold the valve in position.

Use a suitably sized spanner or adjustable wrench on the compression nut to tighten the joint, do not over tight.



## Operation

Ball valve has a quarter turn operation, clockwise to close, providing quick and positive isolation.

Remove the dust cover from the top of the stem exposing the hexagonal section at the top of the stem.

Insert the adjustment tool, which is an optional extra part code TRBVKEY, into the hexagonal section and rotate clockwise to close or anticlockwise to open. Alternatively, a suitably sized allen key or a large flat head screw driver can be used to adjust the valve.

The tool will be in-line with the valve in the open position.

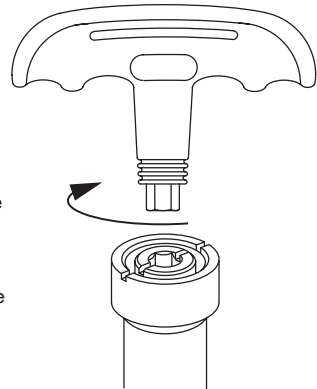
When the tool is removed the open position can be determined by the slot in the stem being in-line with the slot in the body as shown - the open position.

Caution: Rapid closure of quarter turn ball valves on liquid service may cause water hammer and shock in the system.

The valve should only be used in the fully open or closed positions and should not be used to regulate the flow.

When operating is completed refit the dust cover to protect the top of the stem, red for hot applications and blue for cold.

The adjustment tool is manufactured from a heat insulating polymer but on hot application it is recommended that suitable hand protection should be worn.



**Notes:**

**Notes:**

**Please leave this Manual for the User**

To activate your product warranty please visit

**[www.intatec.co.uk](http://www.intatec.co.uk)**

and click on Product Registration

**inta**

**Intatec Ltd**

Airfield Industrial Estate

Hixon

Staffordshire

ST18 0PF

Tel: **01889 272 180**

Fax: **01889 272 181**

email: **[sales@intatec.co.uk](mailto:sales@intatec.co.uk)**

web: **[www.intatec.co.uk](http://www.intatec.co.uk)**