

UPS4 GO

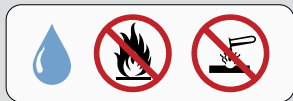




GB: Warning


This appliance can be used by children aged from 8 years and above and persons with reduced physical, sensory or mental capabilities or lack of experience and knowledge if they have been given supervision or instruction concerning use of the appliance in a safe way and understand the hazards involved. Children shall not play with the appliance. Cleaning and user maintenance shall not be made by children without supervision.







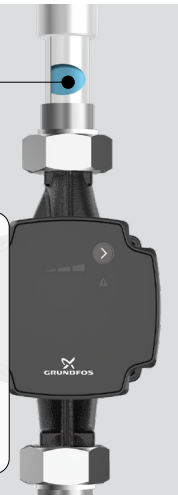


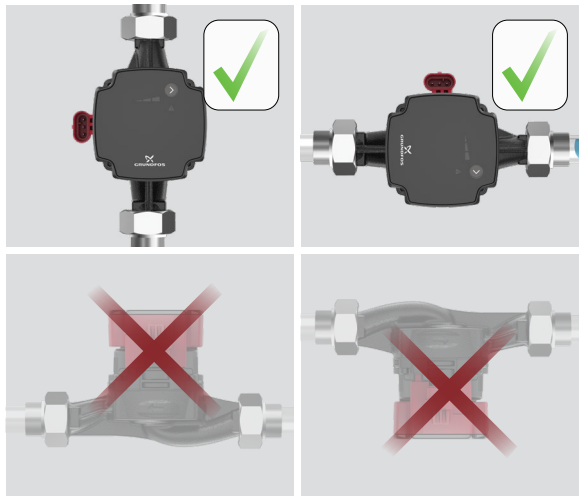
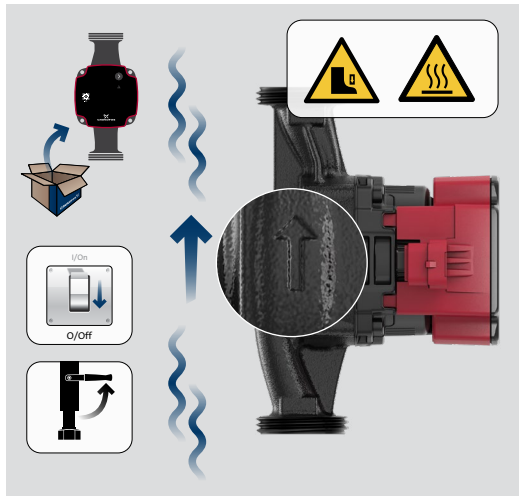
Max. 95 % RH
IP44

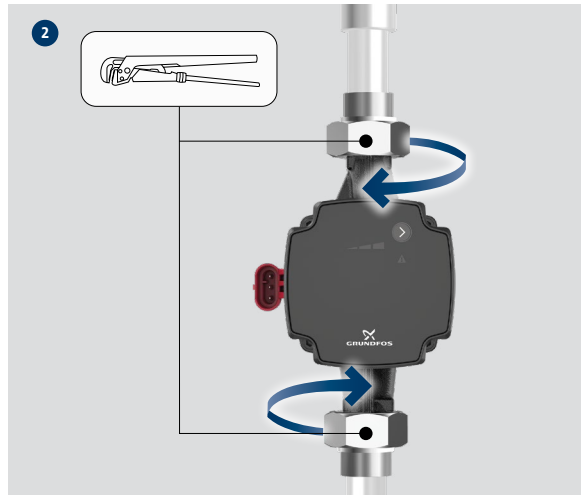
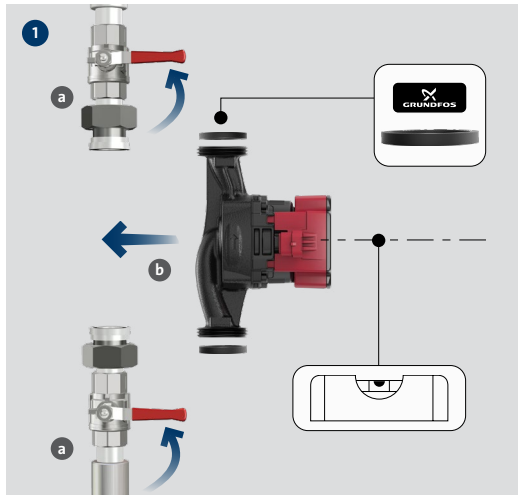


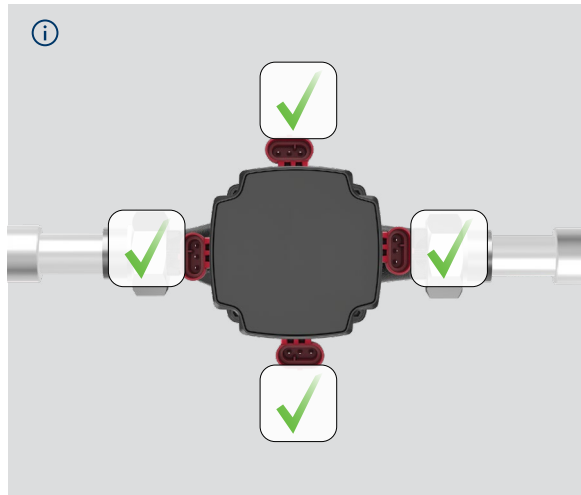
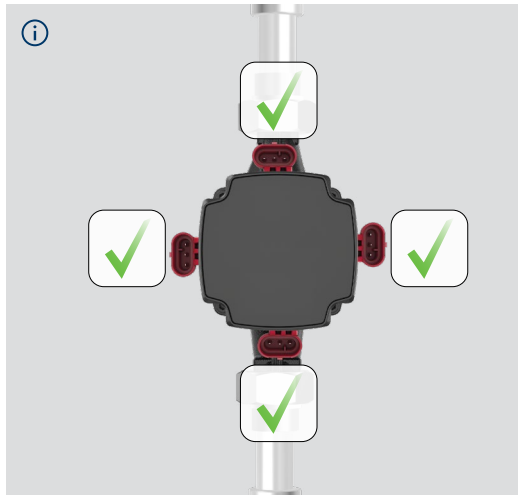
 Min. / Max.
-10 °C / +110 °C

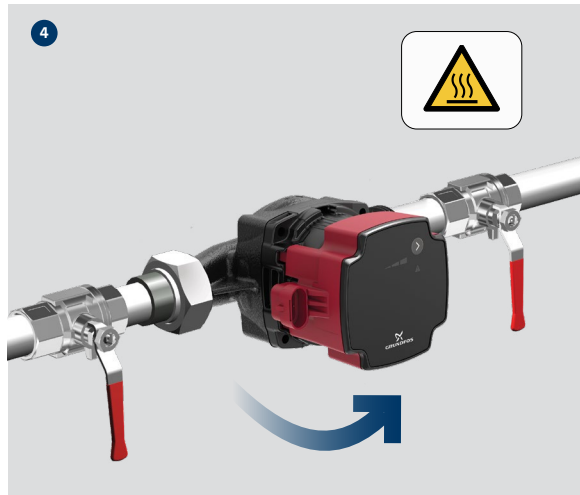
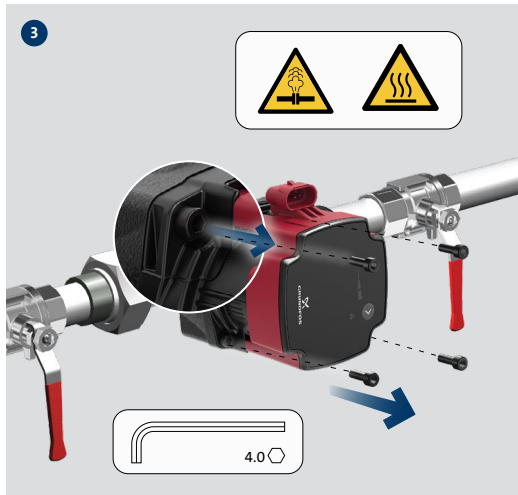
 Max. 1.0 MPa (10 bar)
 Min./Max. 0 °C / +55 °C
 $L_p < 25 \text{ dB(A)}$
 $1 \times 220\text{-}240 \text{ V} \pm 6 \%$
 $\sim 50/60 \text{ Hz, PE}$

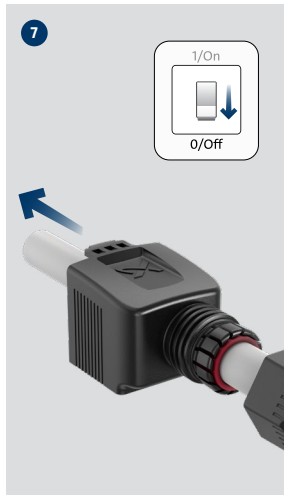
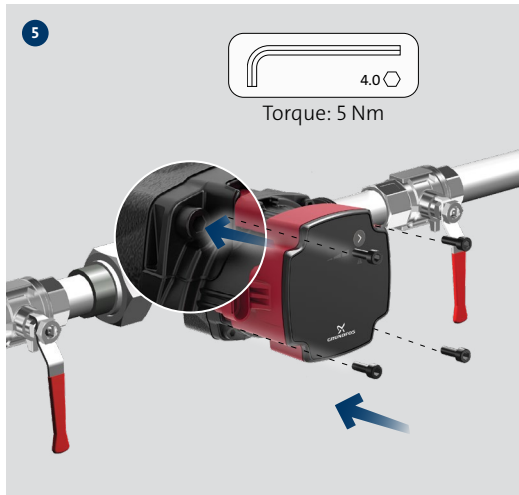


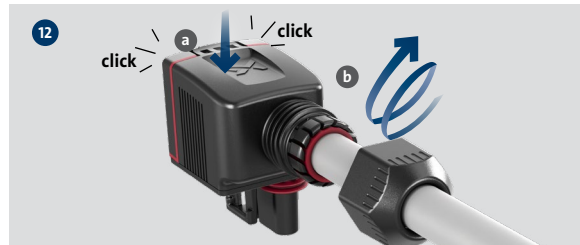
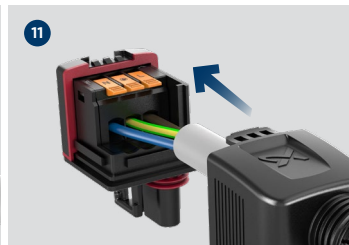
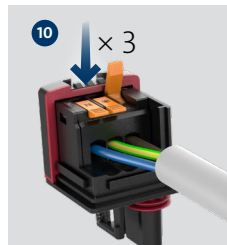
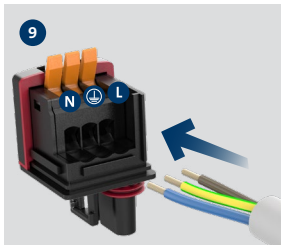
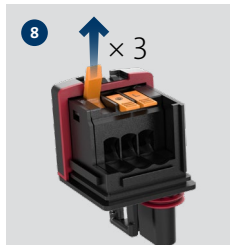
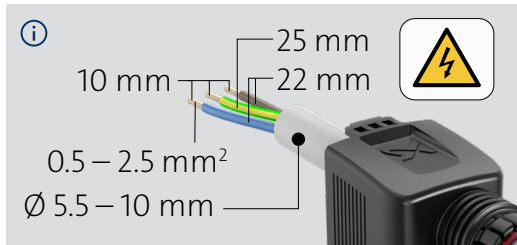


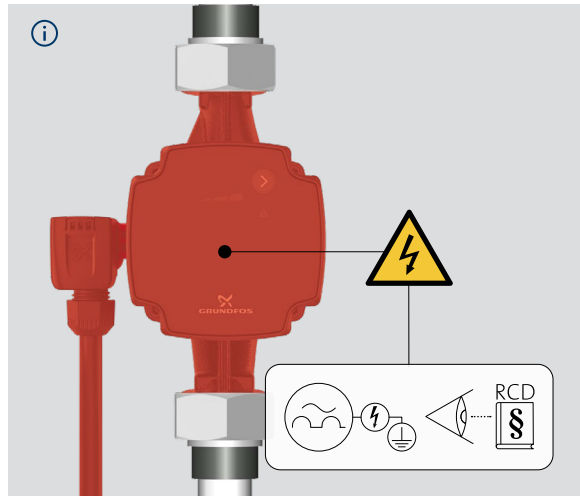
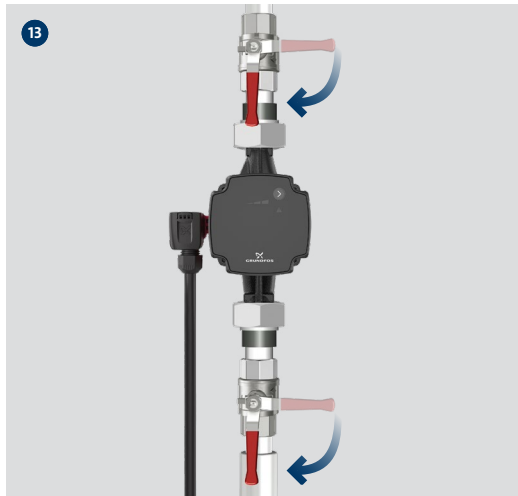






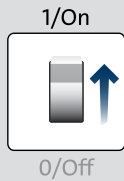




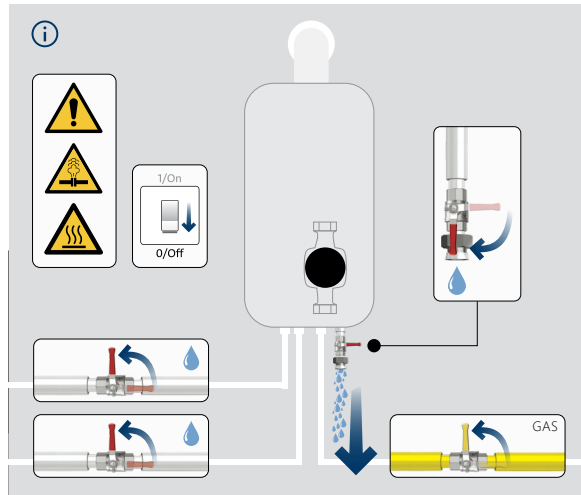


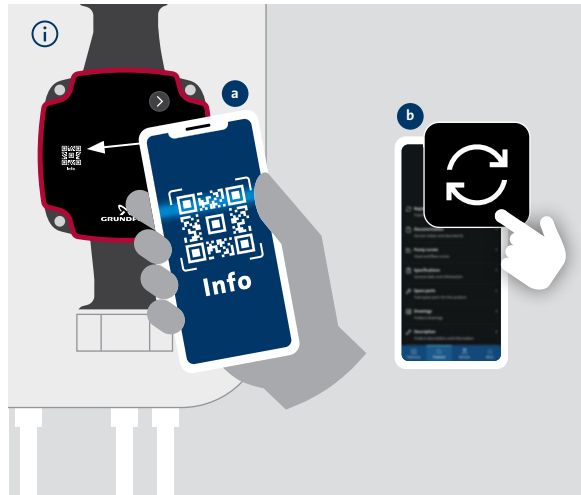


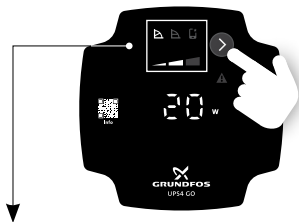
14a



14b

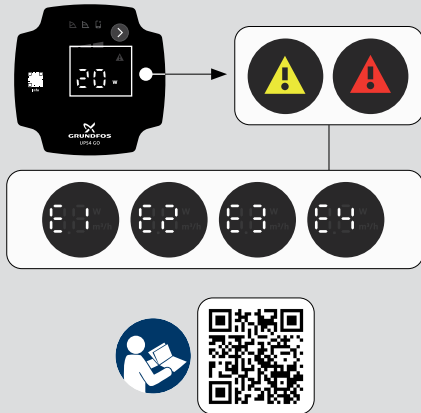






Proportional pressure setting 1	Proportional pressure setting 2	Proportional pressure setting 3

Constant pressure setting 1	Constant pressure setting 2	Constant pressure setting 3
Constant curve setting 1	Constant curve setting 2	Constant curve setting 3



GB: The crossed-out wheeled bin symbol on a product means that it must be disposed of separately from household waste. When a product marked with this symbol reaches its end of life, take it to a collection point designated by the local waste disposal authorities. The separate collection and recycling of such products will help protect the environment and human health.



UK declaration of conformity

We, Grundfos, declare under our sole responsibility, that products declared below, are in conformity with UK regulations, standards, and specifications.

Valid for products identified: GFTBB, GFTBC

Object: Circulator pump

Manufacturer and person authorised to compile the technical file:
Grundfos Holding A/S, Poul Due Jensens Vej 7, 8850 Bjerringbro, Denmark

Products marked GFTBB, GFTBC:

Electrical Equipment (Safety) Regulations 2016

Standards used:
EN 60335-1:2012 + AC:2014 + A11:2014 + A13:2017 + A1:2019 + A14:2019 + A2:2019 + A15:2021 + A16:2023, EN 60335-2-51:2023 + A11:2023, IEC 60335-2-40:2022

Electromagnetic Compatibility Regulations 2016

Standards used:
EN 55014-1:2017 + A11:2020, EN 55014-1:2021, EN 55014-2:1997 + AC:1997 + A1:2001 + A2:2008
EN 55014-2:2021, EN 61000-3-2:2014, EN 61000-3-2:2019 + A1:2021, EN 61000-3-3:2013 +

A1:2019 + A2:2021 + AC:2022-01, EN 61000-6-2:2005 + AC:2005, EN 61000-6-2:2019

The Ecodesign for Energy-Related Products and Energy Information (Amendment) (EU Exit) Regulations 2019

using Regulation (EC) No 641/2009 and Regulation (EU) No 622/2012.
Standards used:
EN 16297-1:2012, EN 16297-2:2012

The Restriction of the Use of Certain Hazardous Substances in Electrical and Electronic Equipment Regulations 2012

Standards used:
EN IEC 63000:2018

This Declaration of Conformity is valid together with Grundfos publication number 93110162 Quick guide UPS4 GO.

Bjerringbro, 2nd of October, 2024

Jan Maas Vølker
Head of Product Development

GRUNDFOS Holding A/S
Poul Due Jensens Vej 7
DK-8850 Bjerringbro, Denmark
[10000658694]

United Kingdom

GRUNDFOS Pumps Ltd.
Grovebury Road, Leighton Buzzard/Beds. LU7 4TL
Phone: +44-1525-850000; Telefax: +44-1525-850011





93110162

ECM: 1410969

01.2025

GRUNDFOS Holding A/S

Poul Due Jensens Vej 7

DK-8850 Bjerringbro

Tel: +45 87 50 14 00

www.grundfos.com



The name Grundfos, the Grundfos logo are registered trademarks owned by Grundfos Holding A/S or Grundfos A/S, Denmark. All rights reserved worldwide.

GRUNDFOS 

