

# ALPHA2 GO

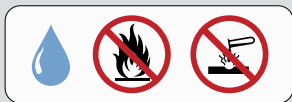




### **GB: Warning**






This appliance can be used by children aged from 8 years and above and persons with reduced physical, sensory or mental capabilities or lack of experience and knowledge if they have been given supervision or instruction concerning use of the appliance in a safe way and understand the hazards involved. Children shall not play with the appliance. Cleaning and user maintenance shall not be made by children without supervision.



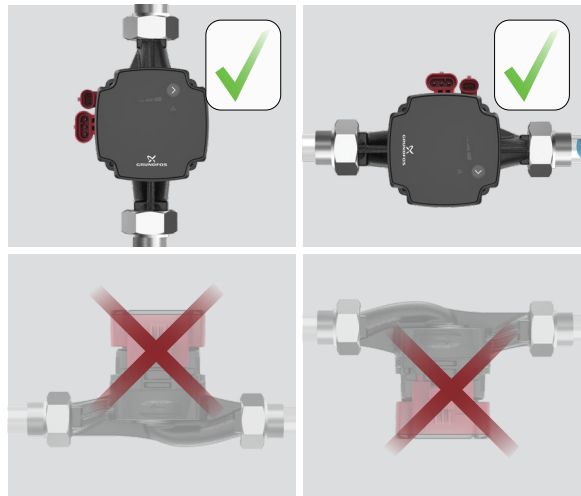
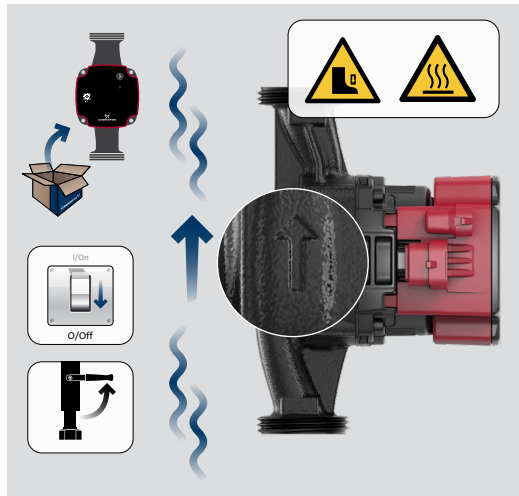


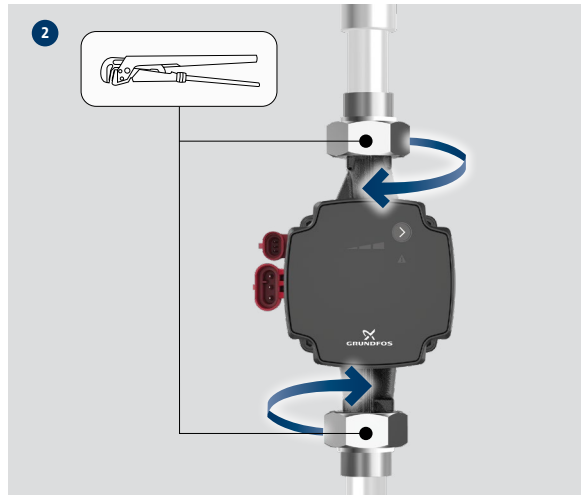
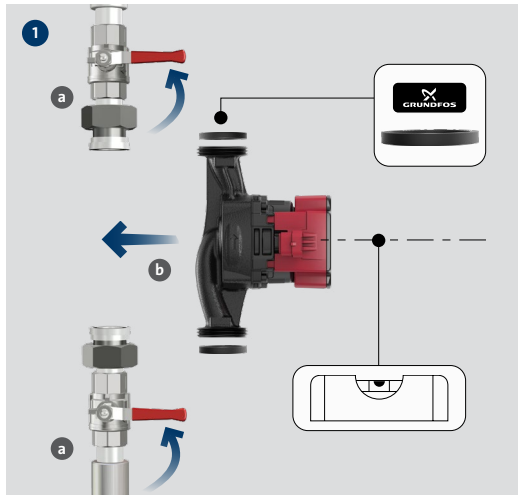
Max. 95 % RH  
IP44, IPX4D (K XX-75)

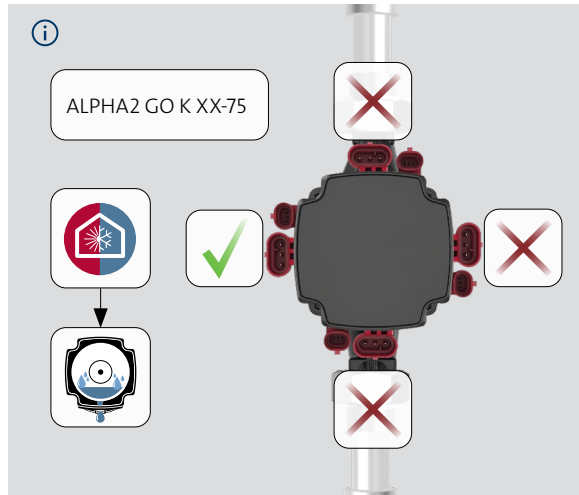
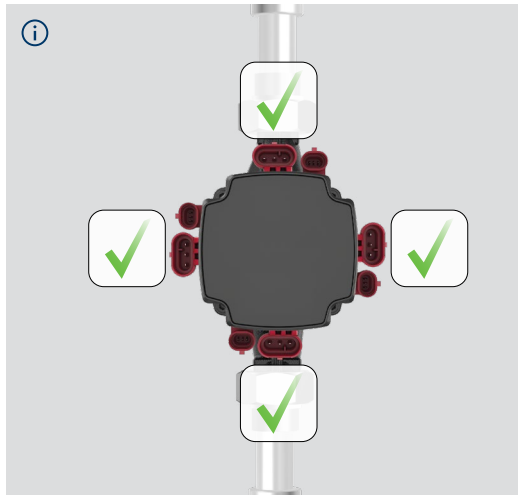


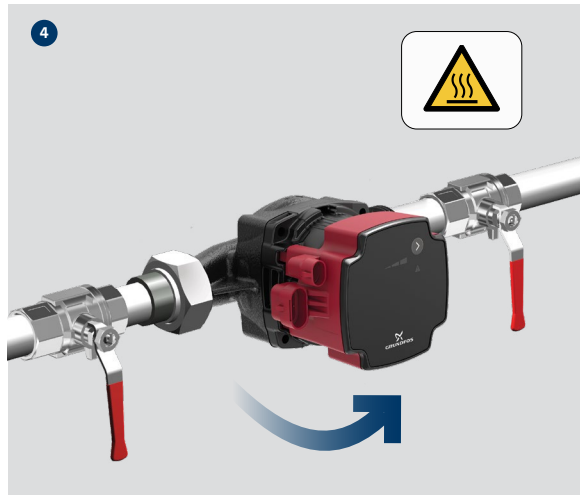
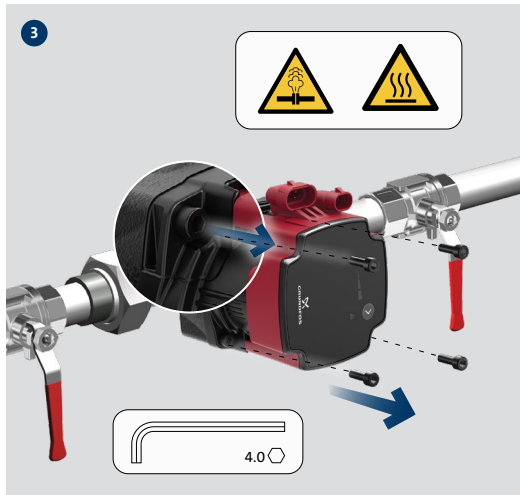
	Min.	Max.
 XX-40:	2 °C	110 °C
XX-75:	-10 °C	110 °C
K XX-75:	-20 °C	110 °C
 Max. 1.0 MPa (10 bar)		
 Min./Max. 0 °C / +55 °C		
 Lp < 25 dB(A)		
 1 × 220-240 V ± 6 % ~ 50/60 Hz, PE		

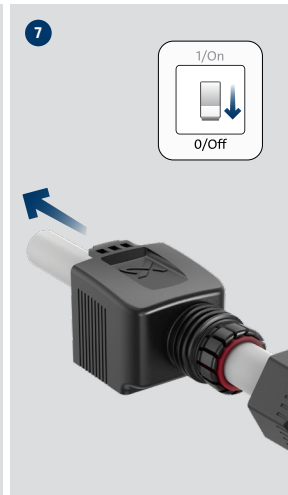
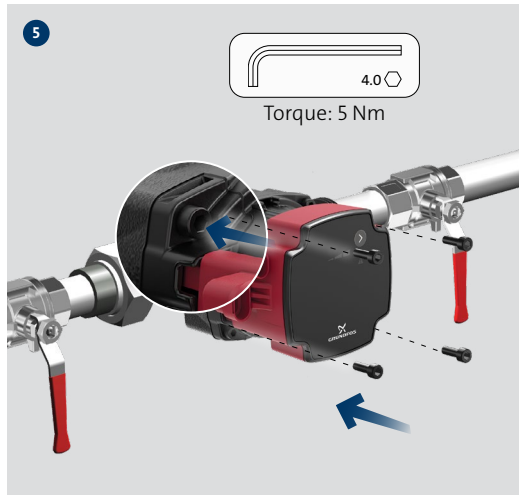




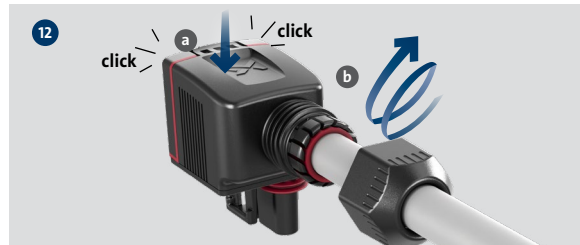
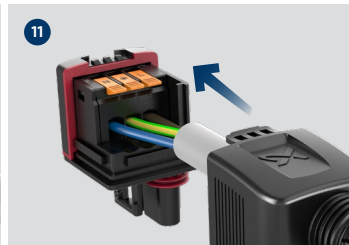
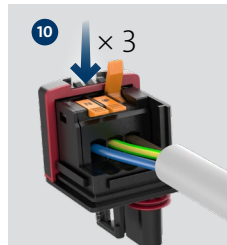
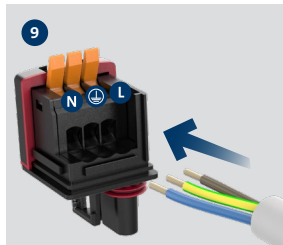
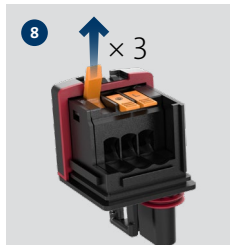
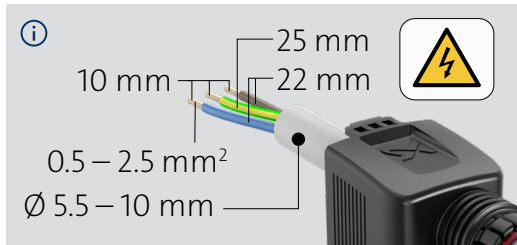


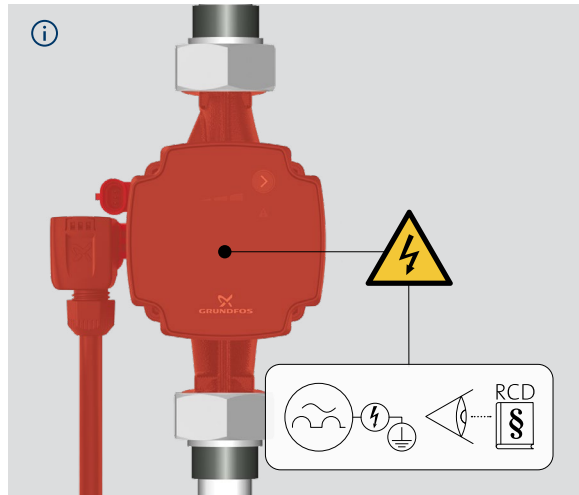
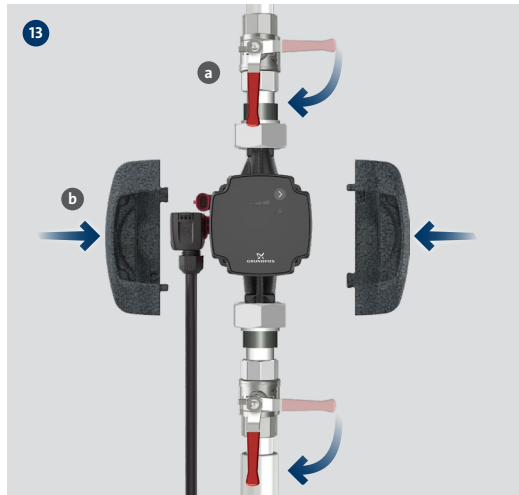






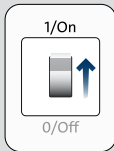








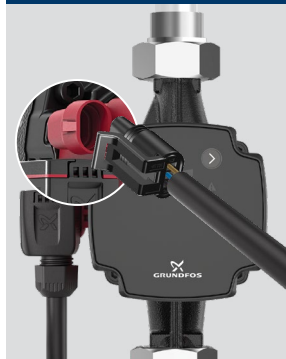
14



Internally controlled?

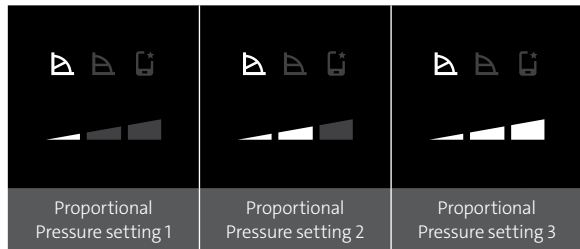
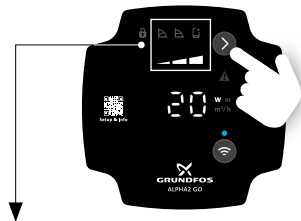



















Externally controlled?





## Internally controlled (A)



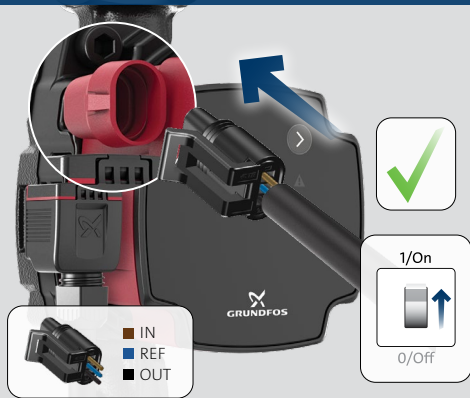
    	  Constant Pressure setting 1	  Constant Pressure setting 2	  Constant Pressure setting 3
	  Constant Curve setting 1	  Constant Curve setting 2	  Constant Curve setting 3

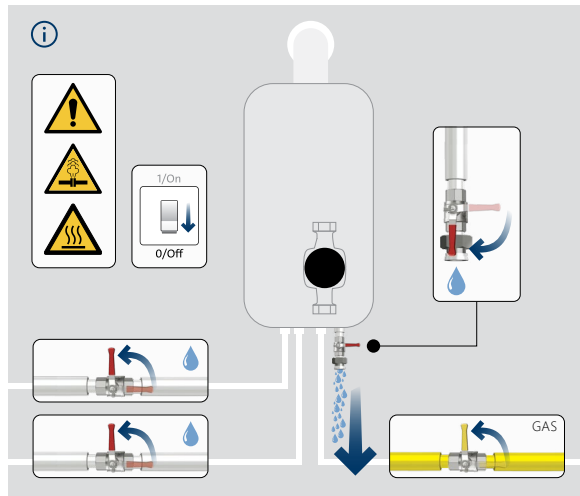




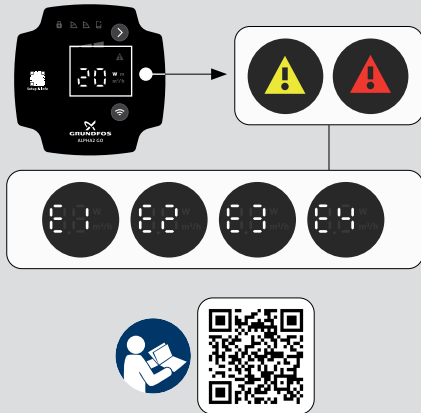


## Externally controlled (PWM)

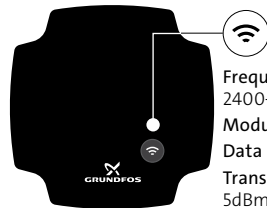








**GB:** The crossed-out wheellie bin symbol on a product means that it must be disposed of separately from household waste. When a product marked with this symbol reaches its end of life, take it to a collection point designated by the local waste disposal authorities. The separate collection and recycling of such products will help protect the environment and human health.



**Frequency of operation:**  
2400–2483.5 MHz (ISM band)  
**Modulation type:** GFSK  
**Data rate:** 1 Mbps  
**Transmit power:**  
5dBm EIRP with internal antenna



## UK declaration of conformity

We, Grundfos, declare under our sole responsibility, that products declared below, are in conformity with UK regulations, standards, and specifications.

Valid for products identified: GFTBD, GFTBF, GFTBG

Object: Circulator pump

Manufacturer and person authorised to compile the technical file:  
Grundfos Holding A/S, Poul Due Jensens Vej 7, 8850 Bjerringbro, Denmark

**Products marked GFTBD, GFTBF, GFTBG:**

### Electrical Equipment (Safety) Regulations 2016

Standards used:  
EN 60335-1:2012 + AC:2014 + A11:2014 + A13:2017 + A1:2019 + A14:2019 + A2:2019 + A15:2021 + A16:2023, EN 60335-2-51:2023 + A11:2023, IEC 60335-2-40:2022

### Radio Equipment Regulation 2017

Standards used:  
EN 55014-1:2017 + A11:2020, EN 55014-1:2021, EN 55014-2:1997 + AC:1997 + A1:2001 + A2:2008  
EN 55014-2:2021, EN 61000-3-2:2014, EN 61000-3-2:2019 + A1:2021, EN 61000-3-3:2013 + A1:2019 + A2:2021 + AC:2022-

01, EN 61000-6-2:2005 + AC:2005, EN 61000-6-2:2019  
ETSI/EN 300 328 v2.2.2, ETSI 301 489-1 V2.2.3, ETSI 301 489-17 V3.2.4, EN 62311:2020

### The Ecodesign for Energy-Related Products and Energy Information (Amendment) (EU Exit) Regulations 2019 using Regulation (EC) No 641/2009 and Regulation (EU) No 622/2012.

Standards used: EN 16297-1:2012, EN 16297-3:2012

### The Restriction of the Use of Certain Hazardous Substances in Electrical and Electronic Equipment Regulations 2012

Standards used: EN IEC 63000:2018

This Declaration of Conformity is valid together with Grundfos publication number 93110183 Quick guide ALPHA2 GO GB.

Bjerringbro, 2<sup>nd</sup> of October, 2024

Jan Maas Vølker  
Head of Product Development

GRUNDFOS Holding A/S  
Poul Due Jensens Vej 7  
DK-8850 Bjerringbro, Denmark  
[10000658695]

### United Kingdom

GRUNDFOS Pumps Ltd.  
Grovebury Road, Leighton Buzzard/Beds. LU7 4TL  
Phone: +44-1525-850000; Telefax: +44-1525-850011



93110183

ECM: 1410969

01.2025

**GRUNDFOS Holding A/S**

Poul Due Jensens Vej 7

DK-8850 Bjerringbro

Tel: +45 87 50 14 00

[www.grundfos.com](http://www.grundfos.com)



The name Grundfos, the Grundfos logo are registered trademarks owned by Grundfos Holding A/S or Grundfos A/S, Denmark. All rights reserved worldwide.

**GRUNDFOS** 

